

1118
January 29th
H. S. D. S. D.

SUBDIVISION OF
LOT 2036, G.I.
CARIBOO DISTRICT.
B.C.

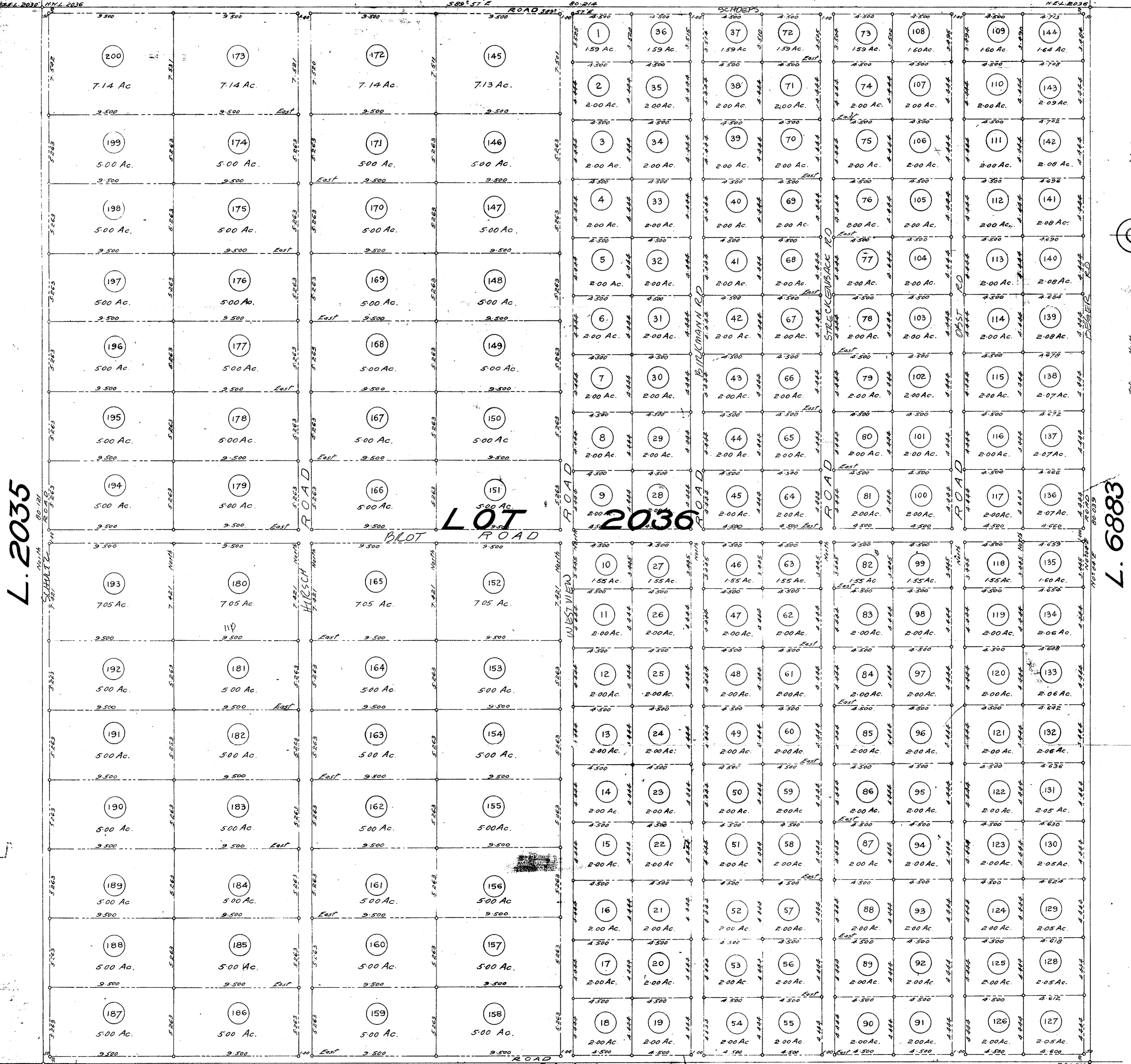
SCALE: 4 CHAINS TO 1 INCH.

Note: The corners of all lots shown on this plan are defined on the ground by 3"x3"x30" wooden posts.

I, F.P. Burns, of Fort George, B.C. a British Columbia Land Surveyor, do hereby certify that the survey represented by this plan was made by me or under my supervision and that the same is correct. The said survey was completed on the 30th day of November, 1911.

J. G. Burns
F. P. Burns
D. C. S.

L. 3683



L. 2035

LOT 2036

L. 6883

L. 2037

L. 2674