

Plan of Subdivision of
 Lot 17, Plan 8870,
 and Part of the Remainder Lot 38, Plan 8391,
 District Lot 753, Cariboo District
 Scale 1" = 100'

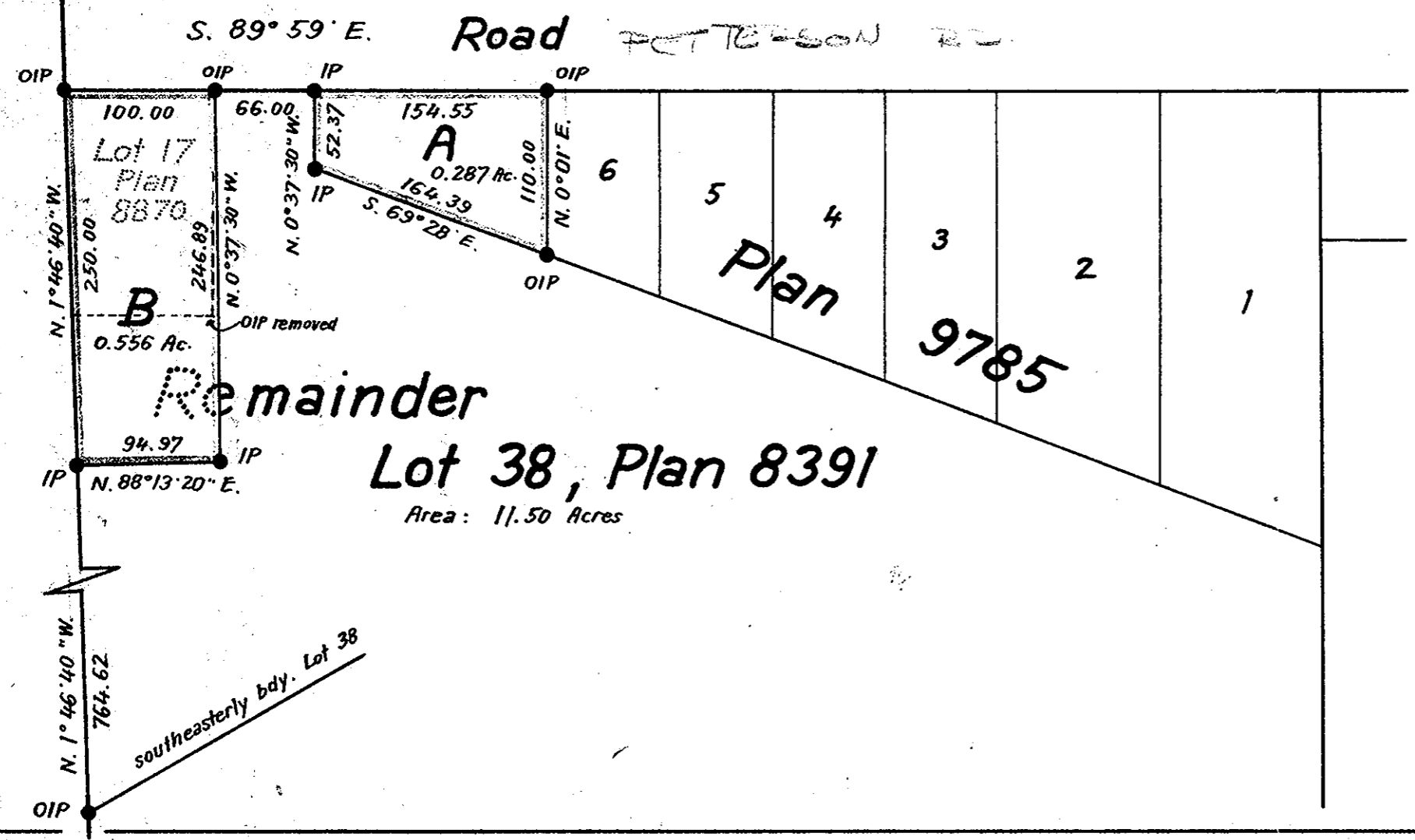
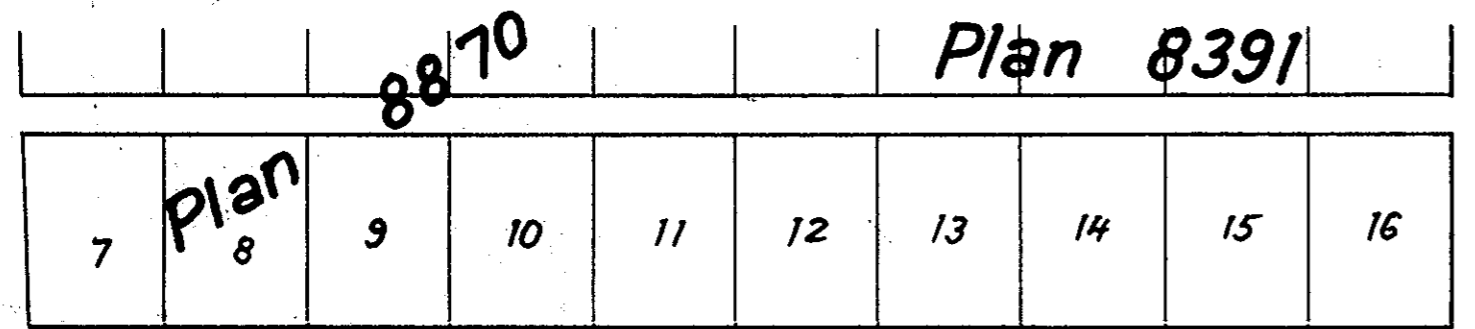
11155
PLAN 11155

Deposited in the Land Registry Office at Kamloops, B.C.
 this 4th day of January 1961

Robert Stewart
 Registrar

Legend

Bearings are astronomic and are derived from
 the South bdy. of the road as shown as
 S. 89° 59' E. on Plan 8870
 Old iron posts found shown ● OIP
 Iron posts set shown ● IP



I, R.J. Goble, of the city of Prince George, British Columbia Land Surveyor,
 make oath and say that I was present at and did personally superintend the
 survey represented by this plan and that the survey and plan are correct.
 The said survey was completed on the 29th day of June 1960

R.J. Goble
 B.C.L.S.

Sworn before me at the city of Prince George
 this 30 day of June 1960

Alfred W. Vance
 owner

W. G. G. Gable
 A Commissioner for taking affidavits
 within British Columbia

REAPPROVED:

Herbert A. Whyte
 APPROVING OFFICER, DEPT. OF HWYS.
 OCTOBER 21, 1960.
 Approved under the Land Registry Act
 this 18th day of AUGUST 1960

W. G. G. Gable
 witness

David Riemer
Lucy Riemer
 owner

Herbert A. Whyte
 Approving Officer
 Dept. of Highways, Victoria, B.C.

W. G. G. Gable
 witness

McWilliam - Whyte - Serle & Goble
 British Columbia Land Surveyors