

Plan of Subdivision of Part of  
 Lot 1, Plan 9566,  
 District Lot 635, Cariboo District  
 Scale 1" = 100'

PLAN 11134

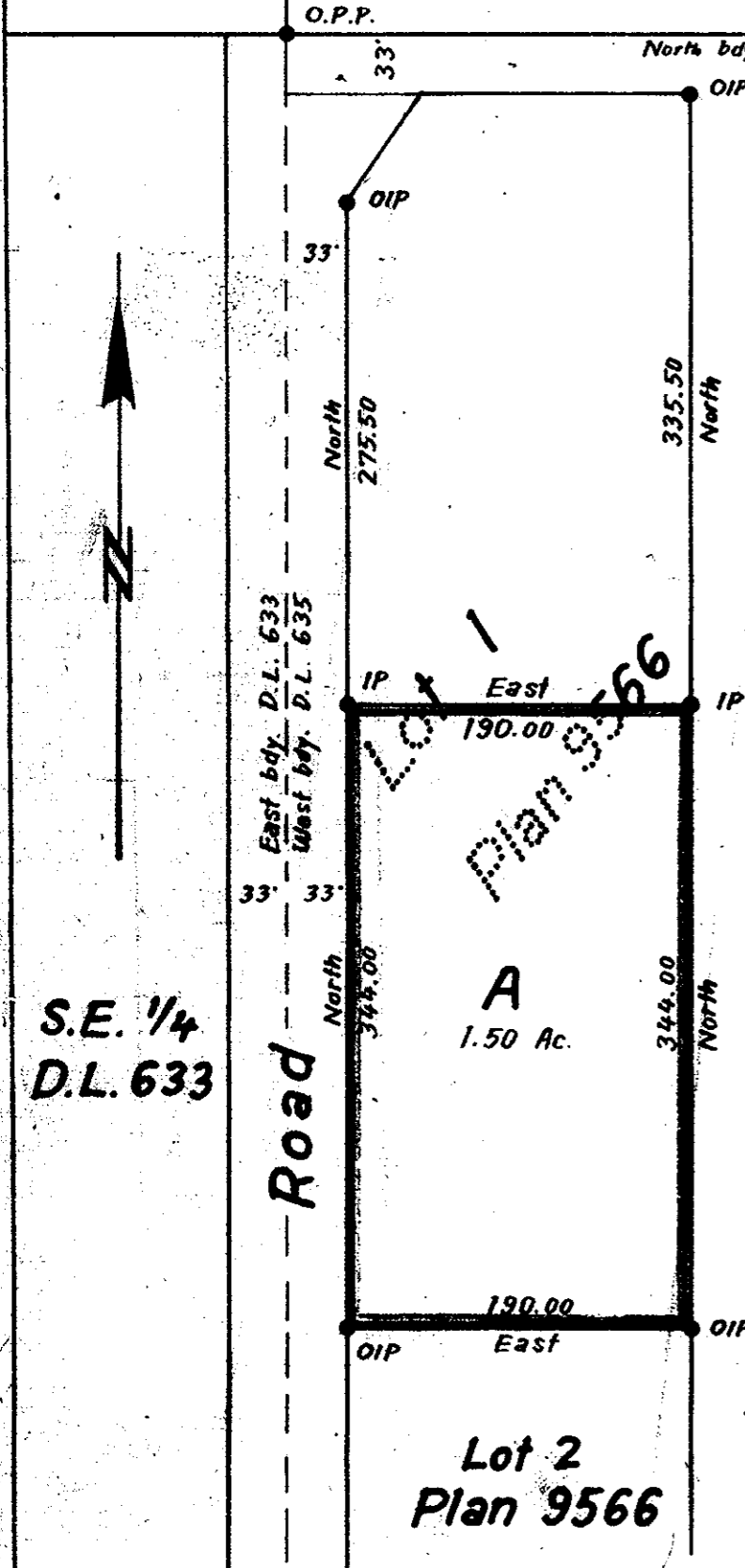
Deposited in the Land Registry Office at Kamloops, B.C.,  
 this 20<sup>th</sup> day of Dec. 1960.

*Chapman*  
 Registrar

Legend

Bearings are astronomic and are derived  
 from the West boundary of Lot 1, Plan 9566.

- Old standard pipe posts found shown ● O.P.P.
- Old iron posts found shown ● OIP
- Iron posts set shown ● IP



I, R.J. Goble, of the city of Prince George, British Columbia Land Surveyor,  
 make oath and say that I was present at and did personally superintend the  
 survey represented by this plan and that the survey and plan are correct.  
 The said survey was completed on the 26<sup>th</sup> day of August 1960.

*R.J. Goble*  
 B.C.L.S.

Sworn before me at the city of Prince George  
 this 2<sup>ND</sup> day of SEPTEMBER 1960.

*Commissioner*  
 A Commissioner for taking affidavits  
 within British Columbia

Approved under the Land Registry Act  
 this 1<sup>ST</sup> day of NOVEMBER 1960.

*Approving Officer*  
 Approving Officer  
 Dept. of Highways, Victoria, B.C.

*Owner*  
 owner  
*Witness*  
 witness

McWilliam-Whyte-Serle & Goble  
 British Columbia Land Surveyors

Ref. No. 60124