

~~NO METRIC BASE MAP~~  
~~(K) (R)~~

Plotted (KR)  
PLAN No. 11086

Deposited in the Land Registry Office at  
Kamloops, B.C. this 6<sup>th</sup> day of Dec. 1960

*[Signature]*  
Registrar

# PLAN OF RE-SUBDIVISION <sup>of Lot 2</sup> OF PART OF PLAN No. 8533 NW 1/4 OF THE NW 1/4 DL 819 CARIBOO DISTRICT, BRITISH COLUMBIA Scale: 200' = 1"

### LEGEND

- IP Denotes a 1/2" x 1/2" x 30" Iron Post set
  - OP Denotes Wood Post set
- Bearings are astronomic derived from the West bdy. of DL 819.

Approved under the Land Registry Act  
this    day of July 1959

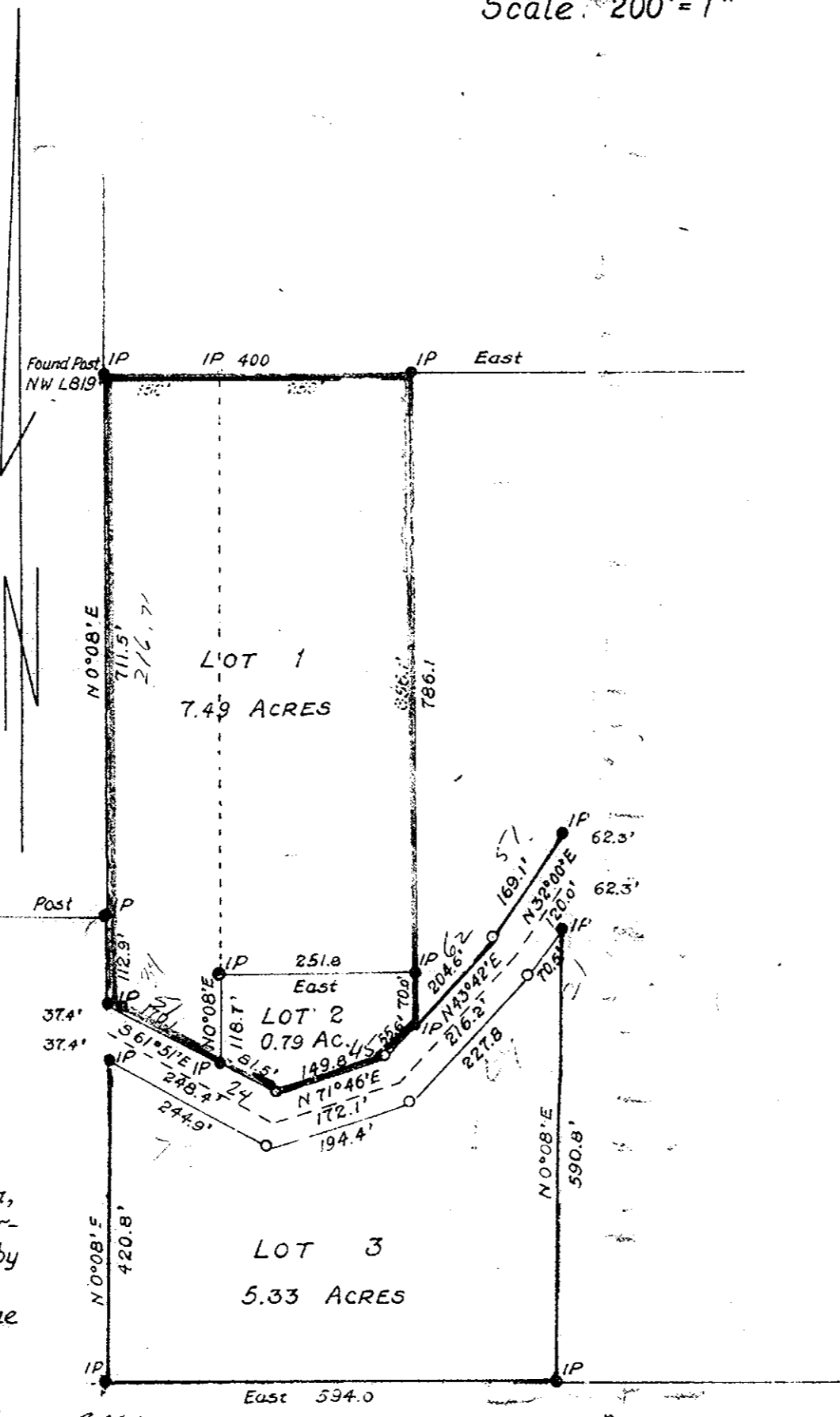
Approving Officer, Dept. of Highways  
Re-assessed this 20<sup>th</sup> day of OCTOBER, 1960.

OWNER: Gordon McWright

WITNESS: \_\_\_\_\_

OWNER: \_\_\_\_\_

WITNESS: \_\_\_\_\_



I, E.H. Burden, of the city of Prince George,  
a British Columbia Land Surveyor, make oath,  
and say that I was present at, and did per-  
sonally superintend the survey represented by  
this plan, and that the survey and plan are  
correct. The said survey was completed on the  
4<sup>th</sup> day of May 1959

Sworn before me, this 8<sup>th</sup> day of May 1959

[Signature]  
A Commissioner for taking affidavits  
within the Province of British Columbia

[Signature]  
B. C. L. S.  
Inspected this 14<sup>th</sup> day of Sept. - 1960  
[Signature]

575+1  
769b  
41.2  
11291