

PLAN OF SUBDIVISION OF PART OF THE SOUTH HALF OF THE S.E. 1/4 OF LOT 2425 - CARIBOO DISTRICT BRITISH COLUMBIA

1959 SCALE: 1"=100'

PLAN NO. 11026
Deposited in the Land Registry
Office at Kamloops this 15TH
day of November 1960

[Signature]
Registrar

NOTE: Bearings are astronomic and are derived from Plan H-226

LEGEND: ● O.P.Con. indicates a concrete monument found.
● O.P.P. indicates a pipe post found.
● O.I.P. indicates an iron post found.
● I.P. indicates an iron post planted

OWNER: *L. Denis*
WITNESS: *[Signature]*

Approved under the Land Registry Act
this 27TH day of JULY 1959

R. S. Hamery
Approving Officer Dept. of Highways.

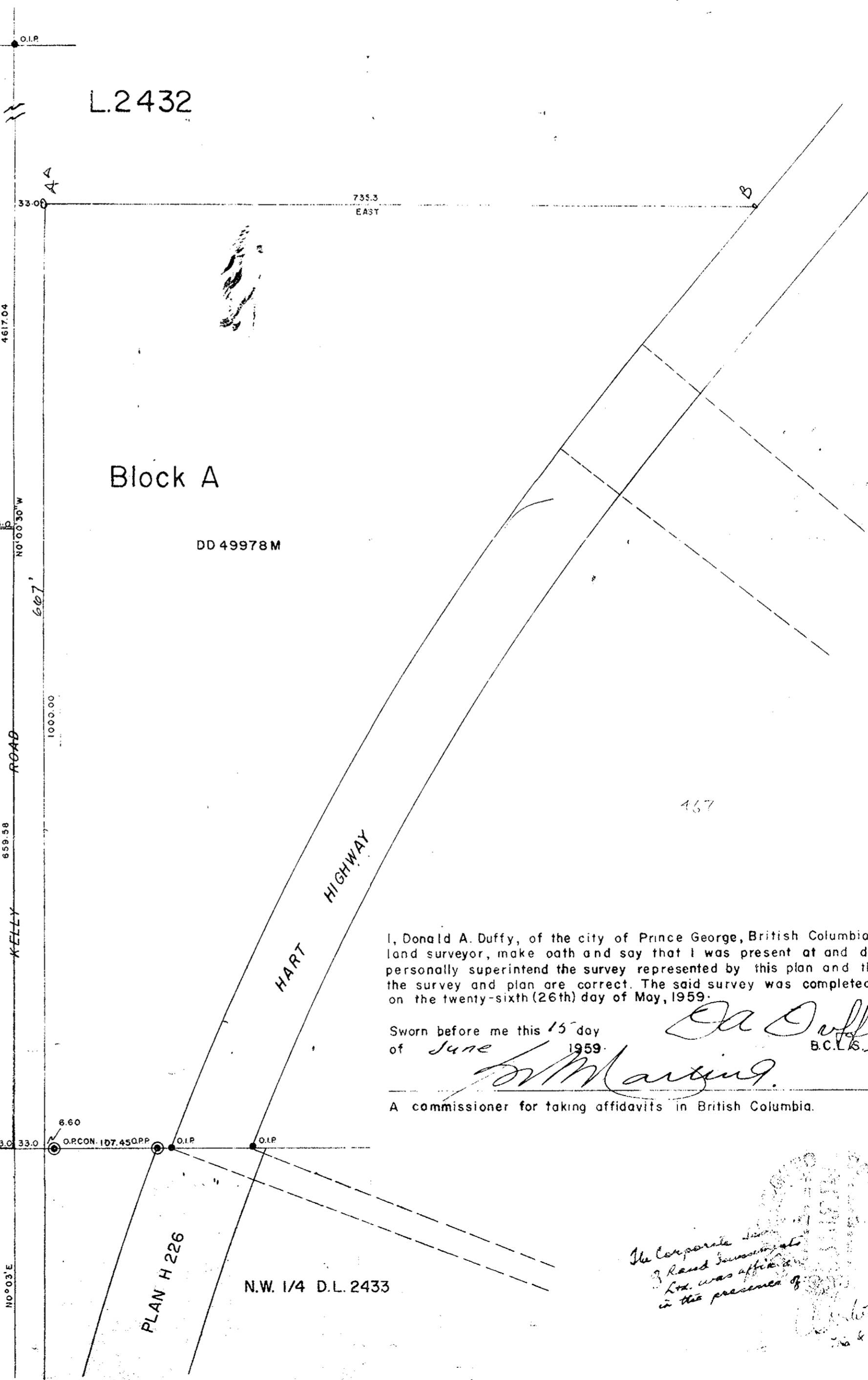
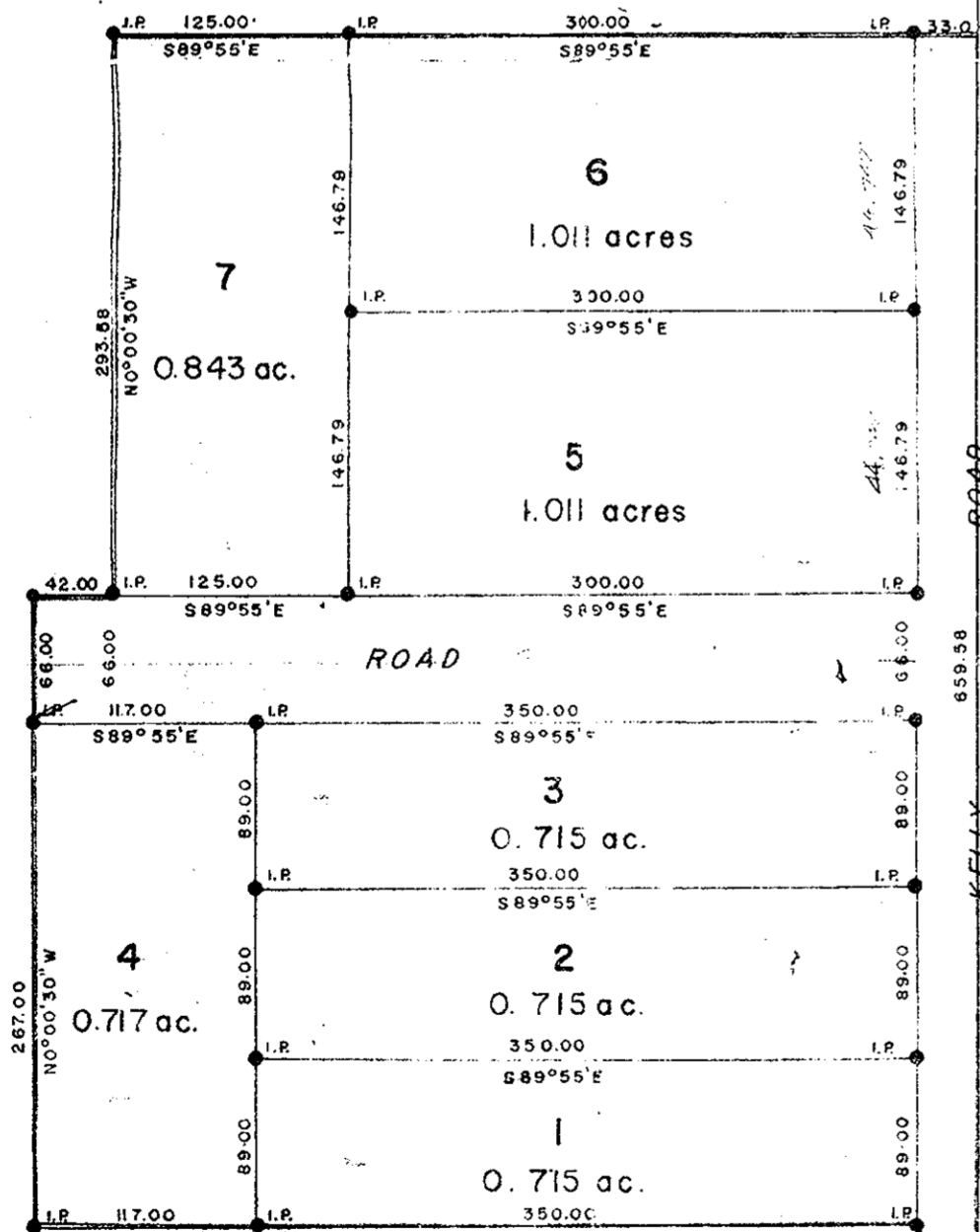
L.2431

L.2432

L.2425

Block A

DD 49978M



I, Donald A. Duffy, of the city of Prince George, British Columbia land surveyor, make oath and say that I was present at and did personally superintend the survey represented by this plan and that the survey and plan are correct. The said survey was completed on the twenty-sixth (26th) day of May, 1959.

Sworn before me this 15 day
of June 1959. *[Signature]* B.C.L.S.

[Signature]
A commissioner for taking affidavits in British Columbia.

*The Corporate Seal
of the Registrar
has been affixed
in the presence of*

NE. 1/4
2424

7
Plan 10221
6
5

N.W. 1/4 D.L. 2433