

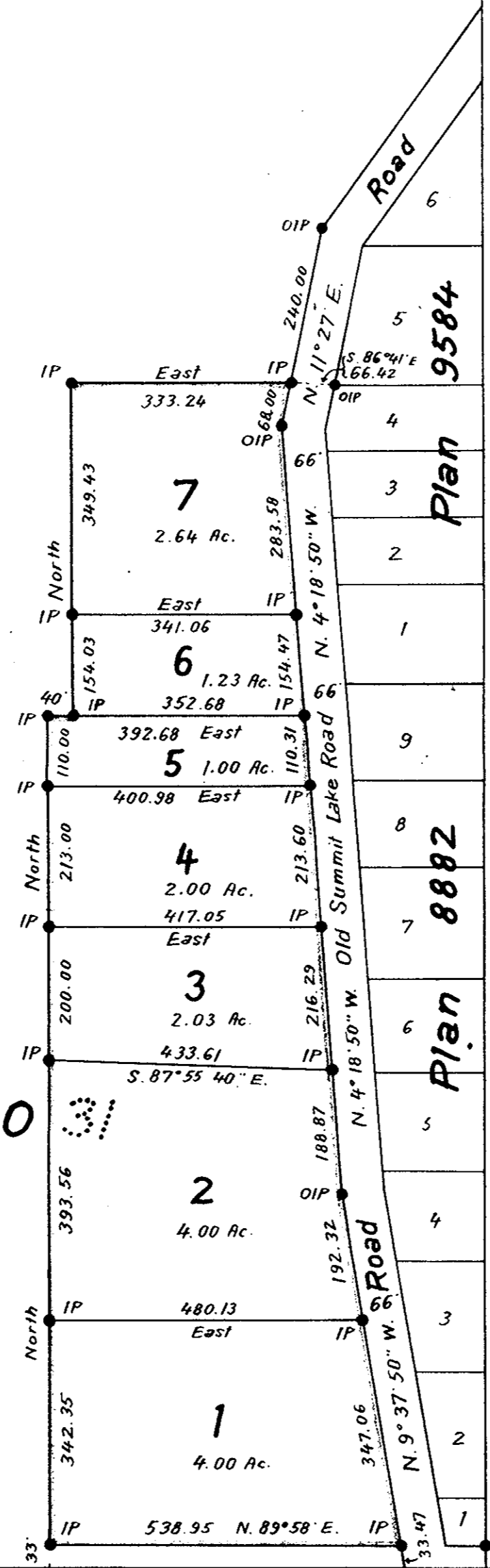
Plan of Subdivision of Part
of the South West 1/4 of District Lot 4031
except Plan 8882
Cariboo District
Scale 1" = 200'

PLAN 10950

Deposited in the Land Registry Office at Kamloops, B.C.,
this 11th day of October 1960

[Signature]
Registrar

Legend
Bearings are astronomic and are derived
from westerly boundary of the Old
Summit Lake Road as shown as N. 4°18'50"W.
on Plan 8882
Old iron posts found shown ● OIP
Iron posts set shown ● IP



S.E. 1/4 D.L. 4030

I, R.J. Goble, of the city of Prince George, British Columbia Land Surveyor,
make oath and say that I was present at and did personally superintend the
survey represented by this plan and that the survey and plan are correct.
The said survey was completed on the 8th day of July 1960

[Signature]
B.C.L.S.

Sworn before me at the city of Prince George
this 15th day of July 1960

[Signature]
A Commissioner for taking affidavits
within British Columbia

[Signature]
owner

Approved under the Land Registry Act
this 8th day of AUGUST 1960

[Signature]
witness

[Signature]
Approving Officer
Dept. of Highways, Victoria, B.C.

[Signature]
owner

[Signature]
witness

Made BT's
6" poplar N. 70° E. 15.5'
5" poplar S. 23° E. 20'
7" poplar S. 60° E. 26.5'

Found old hub
Set IP,
according to field notes
by F. P. Burden, B.C.L.S.
N. 89° 58' E. 1985.80
Total: 2652.45

N.W. 1/4 D.L. 4030

McWilliam-Whyte - Serle & Goble
British Columbia Land Surveyors

Ref. No. 60.115