

PLOTTED GN

PLAN OF SUBDIVISION OF PART OF DISTRICT LOT 1427 CARIBOO DISTRICT-BRITISH COLUMBIA

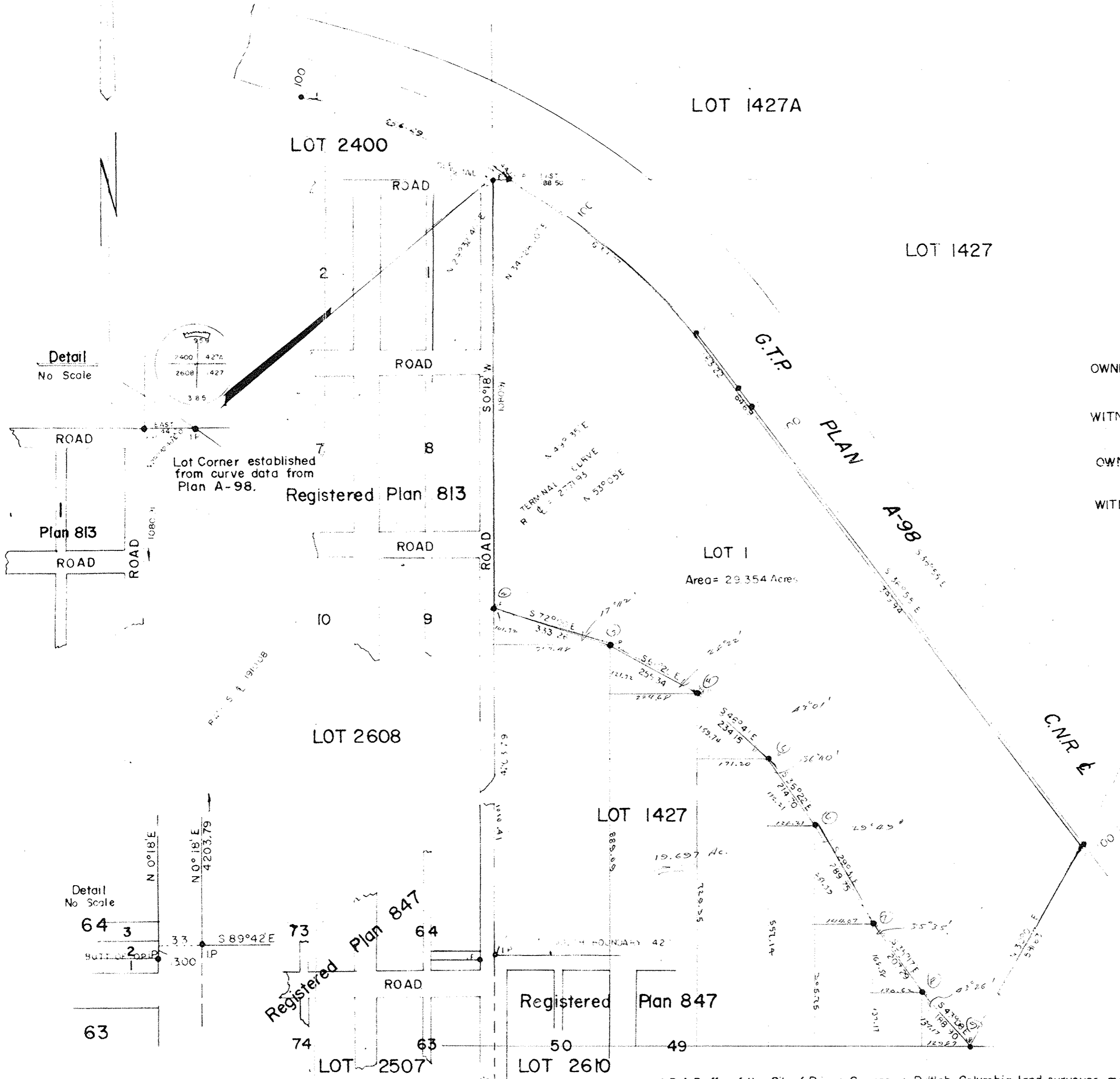
- 1959 - SCALE: 1" = 200'

PLAN NO. 10501
Deposited in the Land Registry
Office at Kamloops this 4th
day of APRIL 1960

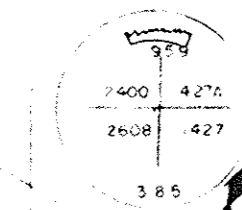
Chapman
REGISTRAR.

NOTE: Bearings are astronomic, derived from the center-line
of the C.N.R. as on Plan A-98.

LEGEND: • O.I.P. indicates an iron pin found.
• I.P. indicates an iron pin placed.
• P.P. indicates a pipe post placed.



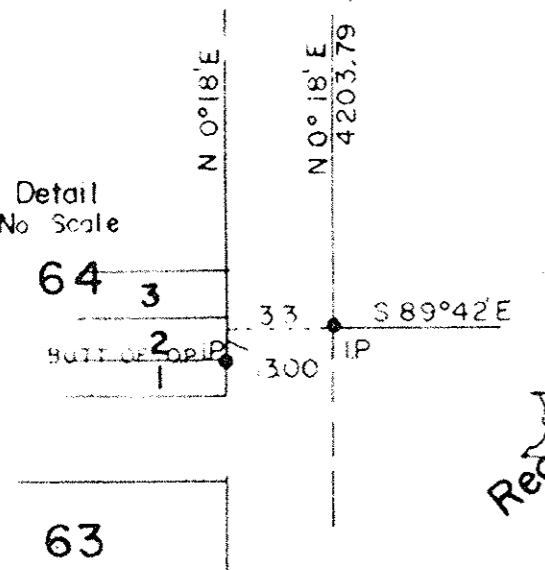
Detail
No Scale



Lot Corner established
from curve data from
Plan A-98.

OWNER : *Chapman*
WITNESS : *W. C. Kelly*
OWNER *Robert Brown*
WITNESS : *W. C. Kelly*

Detail
No Scale



Approved under the Land Registry Act
this 8 day of FEB 1960

W. Jones
Approving Officer, Dept. of Highways,
City of Prince George

I, D.A. Duffy, of the City of Prince George, a British Columbia land surveyor, make oath
and say that I was present at and did personally superintend the survey represented
by this plan and that the survey and plan are correct.
The said survey was completed on the 22nd day of December 1959.

Sworn before me this 24
day of December 1959

D. A. Duffy
B.C.L.S.

W. C. Kelly
A Commissioner for taking affidavits within the Province of British Columbia.