

PLAN OF SUBDIVISION OF PART OF
SOUTH EAST ¼ OF THE SOUTH WEST ¼ OF D.L. 4040
CARIBOO DISTRICT.

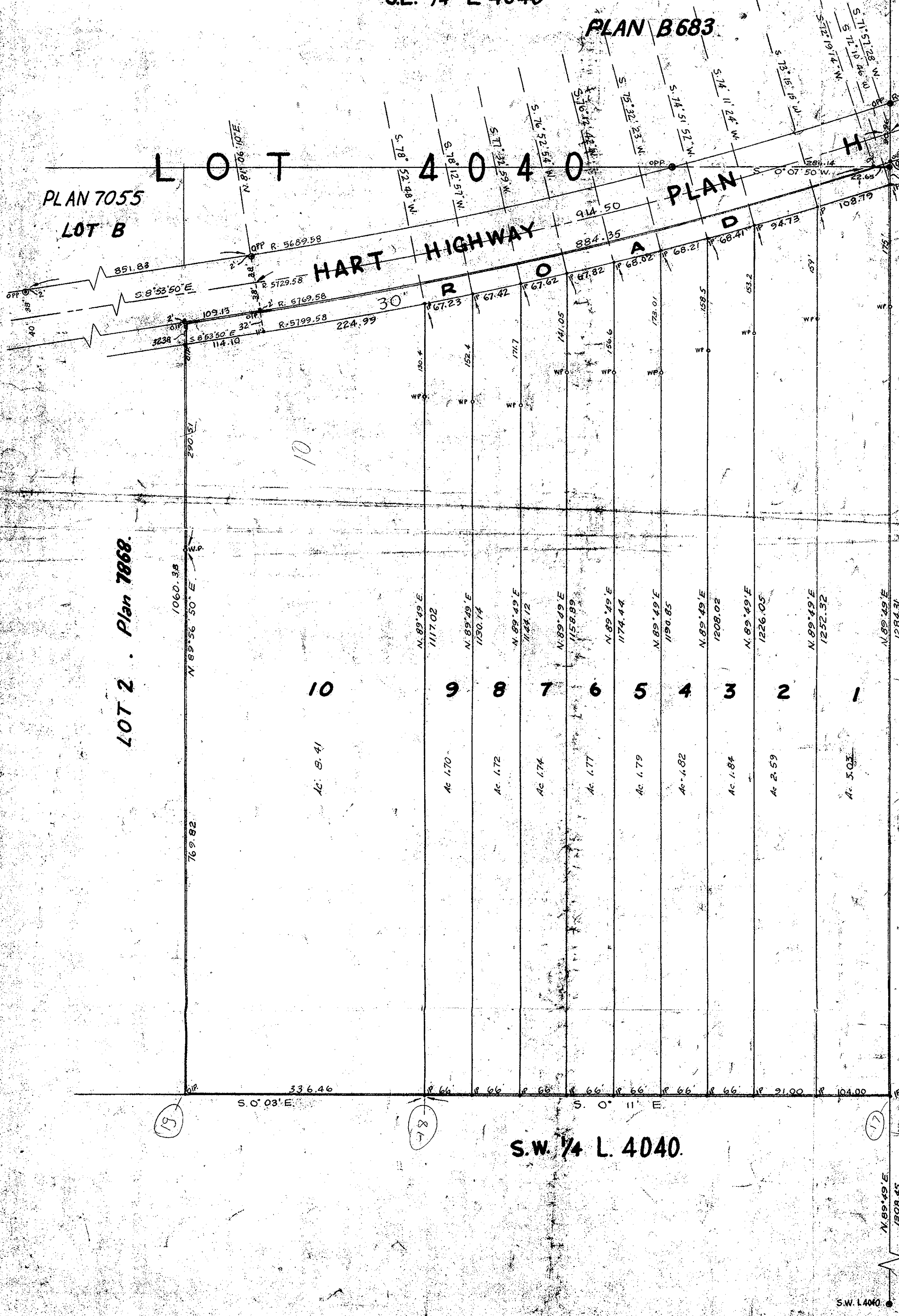
SCALE: 1" = 100'

Deposited in the Land Registry Office of
Kamloops on the 8th day of FEB. 1959

PLAN N^o 10358

SE. ¼ L 4040

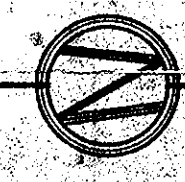
1° Curve
A 74° 33'
Radius to I = 5729.58



LEGEND

- Bearings are astronomic and are derived from old pipe posts found along East Boundary of Hart Highway shown as S. 8° 53' 50" E. on plan N-226 (District Lot 4040).
- Old standard pipe posts found shown: ● O.P.P.
- Old iron posts found shown: ○ O.I.P.
- New iron posts set shown: ○ N.I.P.
- 3' x 3' x 2' wooden posts set shown: ○ W.P.
- Old standard pipe post set in concrete found shown: ● O.P.P.

Inspected this 9th day of October 1959



I, D.G. White of the city of Kamloops, British Columbia Land Surveyor, make oath and say I was present at and did personally superintend the survey represented by this plan and that the survey and plan are correct. The said survey was completed on the 21st day of May, 1957.

D.G. WHITE, L.S.

Sworn before me at Prince George on the 1st day of June, 1957.

A Commissioner for taking Affidavits within British Columbia

APPROVED under the Land Registry Act on the 22nd day of NOVEMBER

Approving Officer, Dept. of Highways & V.

MORTGAGEE: N. Kuey Owner, R. Larson
WITNESS: J.A. Baynes

1984/1776/137/12310357