

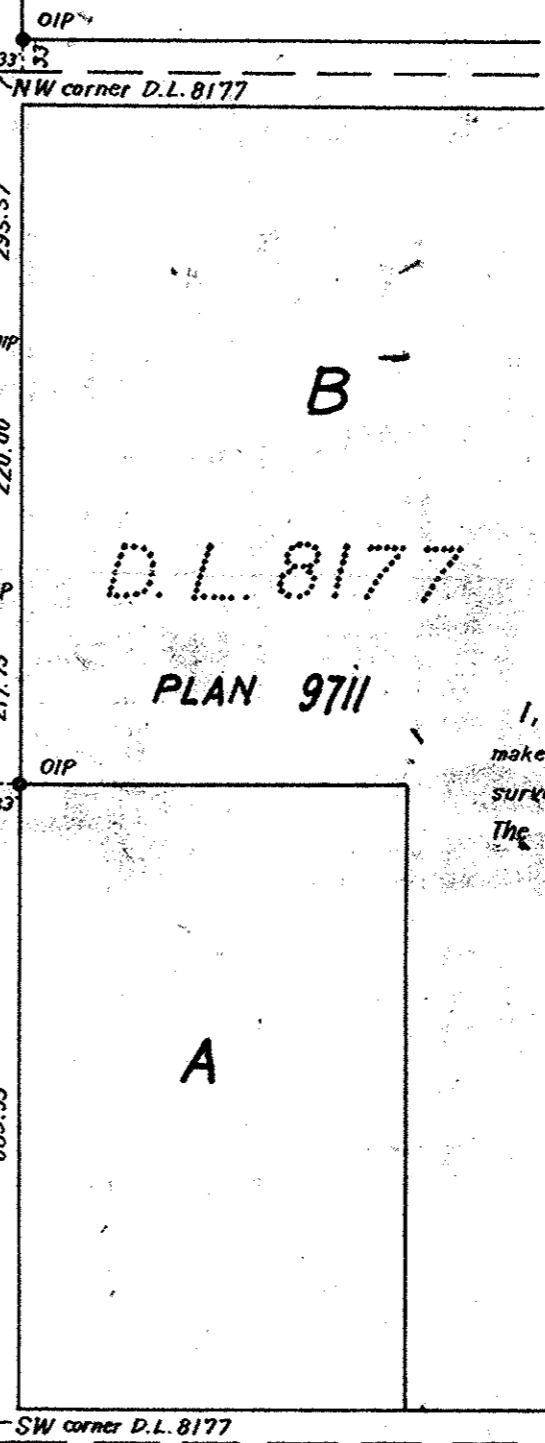
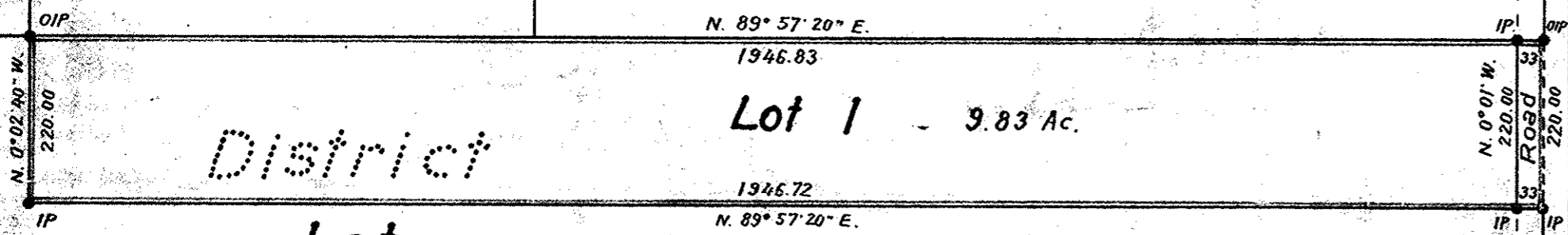
Plan of Subdivision of Part  
of District Lot 9265  
Cariboo District Except the West Half.  
Scale 1" = 200'

10333  
PLAN N<sup>o</sup> 10333  
Deposited in the Land Registry Office at Kamloops, B.C.  
this 1<sup>st</sup> day of Feb 1960

*Chapman*  
Registrar

Legend  
Bearings are astronomic and are derived from  
the West boundary of D.L. 8177 as shown as  
N. 0° 01' W. on Plan 9711  
Old iron posts found shown ● OIP  
Iron posts set shown ● IP

"B"  
Plan B 3543  
District Lot 2611 Plan B 3004



I, R.J. Goble, of the city of Prince George, British Columbia Land Surveyor,  
make oath and say that I was present at and did personally superintend the  
survey represented by this plan and that the survey and plan are correct.  
The said survey was completed on the 26<sup>th</sup> day of June, 1959

*R.J. Goble*  
B.C.L.S.

Sworn before me at the city of Prince George  
this 26 day of June 1959

*Commissioner*  
A Commissioner for taking affidavits  
within British Columbia

Approved under the Land Registry Act  
this 4<sup>th</sup> day of SEPT. 1959

*H. Triad*  
Approving Officer  
Dept. of Highways, Victoria, B.C.

Re-approved on the 6<sup>th</sup> day  
of January 1960.

*Approving Officer*  
Dept. of Highways, Victoria, B.C.

owner  
*Agyle*  
witness  
*...*

District Lot 9264

8	7	6	5	4	1
				Plan	9122

McWilliam-Whyte-Serle & Goble  
British Columbia Land Surveyors