

# PLAN OF SUBDIVISION OF PART OF S. W 1/4 D.L. 972

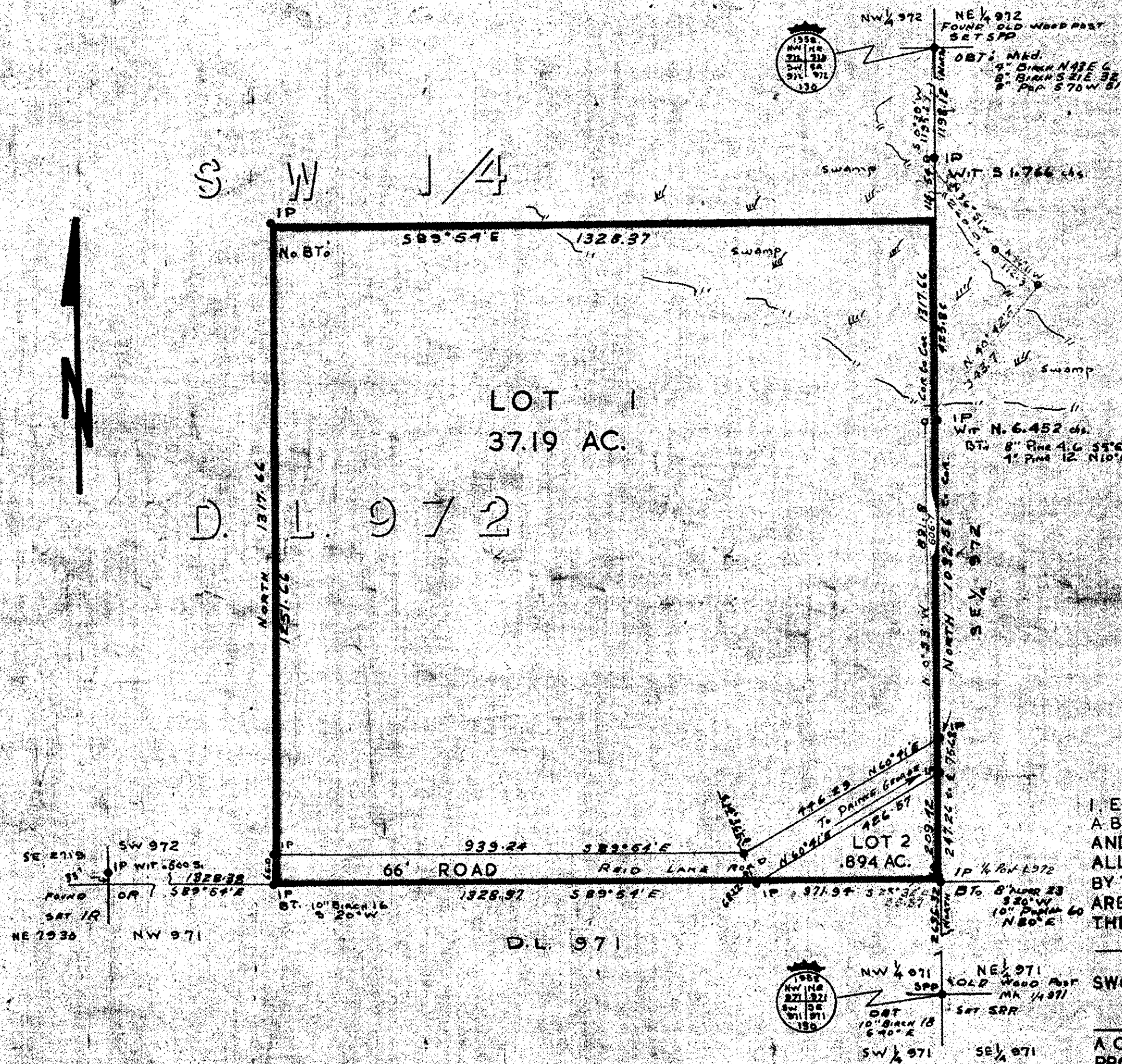
CARIBOO DISTRICT BRITISH COLUMBIA

SCALE 1" = 200'

PLAN NO. 10329  
DEPOSITED IN THE LAND REGISTRY  
OFFICE THIS 29<sup>th</sup> DAY OF JAN 1960

*Chas. Burden*  
REGISTRAR

- OP DENOTES AN OLD WOOD POST FOUND ON THIS SURVEY
  - IP DENOTES A IRON POST SET ON THIS SURVEY
  - SPP DENOTES A STANDARD PIPE POST SET ON THIS SURVEY
- BEARINGS ARE ASTRONOMIC, DERIVED FROM THE EAST BDY. OF THE SE 1/4 DL 972



I, E. H. BURDEN, OF THE CITY OF PRINCE GEORGE, A BRITISH COLUMBIA LAND SURVEYOR, MAKE OATH AND SAY THAT I WAS PRESENT AT, AND DID PERSONALLY SUPERINTEND THE SURVEY REPRESENTED BY THIS PLAN, AND THAT THE SURVEY AND PLAN ARE CORRECT. THE SAID SURVEY WAS COMPLETED ON THE 3 DAY OF SEPTEMBER 1958

*E. H. Burden*  
B.C.L.S.

SWORN BEFORE ME THIS 25<sup>th</sup> DAY OF September 1959

*D. J. Daniel*  
A COMMISSIONER FOR TAKING AFFIDAVITS WITHIN THE PROVINCE OF BRITISH COLUMBIA.

*I hereby certify that this is a true copy of the Official Plan as deposited in the Department of Lands and Forests and numbered Plan 5 Tube 507.*

*[Signature]*  
Surveyor General  
Victoria, B.C.  
4<sup>th</sup> December, 1959.

Approved under the Land Registry Act  
this 6 day of JANUARY 1960

*[Signature]*  
Approving Officer, Dept. of Highways.

1960/11/25