

**PLAN OF SUBDIVISION OF PART OF
PARCEL Z LOT 1430 AND PART OF
PARCEL Y LOT 777
CARIBOO DISTRICT.**

SCALE 1 inch = 100 feet.

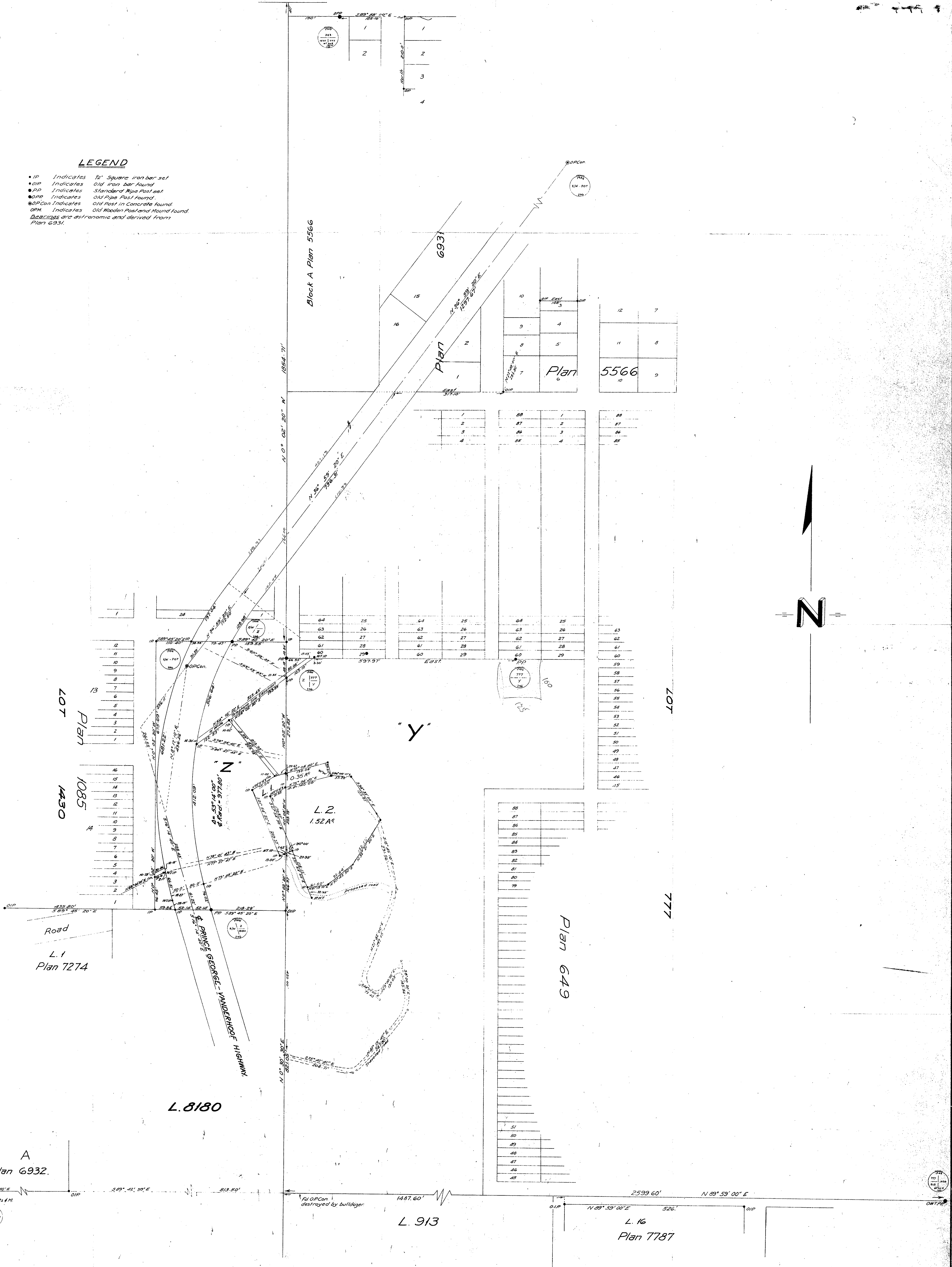
HK

Plan No 10024

Deposited in the Land
Registry Office at Kamloops
this 16th day of **Sept.** 1933.

LEGEND

- IP Indicates 1/2" Square iron bar set
 - OP Indicates Old iron bar found
 - PP Indicates Standard Pipe Post set
 - OPP Indicates Old Pipe Post found
 - OPCon Indicates Old Post in Concrete found
 - OPM Indicates Old Wooden Post and found found
- Distances are astronomic and derived from Plan 6931.



I hereby certify that this is a true copy
of the Official Plan on deposit in the
Department of Lands and Forests and
numbered Plan 10 Tube 666.

[Signature]
Surveyor General
Victoria, B.C.
July 14th 1933.

Approved under the Land Registry Act
this 22nd day of **JULY** 1933.

[Signature]
Approving Officer
City of Prince George

I, D.W. Carrier of the City of Victoria, British Columbia
land surveyor, make oath and say that I was present
at and did personally superintend the survey
represented by this plan, and that the survey
and plan are correct.
The said survey was completed on the 5th day of August 1936.
Sworn before me this
13th day of March 1937. *[Signature]*

[Signature]
A Commissioner for taking Affidavits within British Columbia