

City of Prince George  
HISTORY SHEET

018895816  
018895859  
018895841

018895832

WO # 049

DS

SHEET NUMBER

Roll Number

Legal: LOT'S BLOCK D.L. 343 PLAN P65187

Address: 588 MELVILLE AVE.

Sanitary Connection: # SIZE 100MM MATERIAL PVC INV. CONNECTED

Water Connection # SIZE 40MM MATERIAL Copper METER CONNECTED

Storm Connection: # SIZE 200MM MATERIAL PVC INV. CONNECTED

Cash Receipt No's: WATER 13656 SANITARY 13656 STORM 13656

CURB FROM PROPERTY LINE

PAVEMENT WIDTH

B.C. HYDRO 0/H UNDERGROUND CONNECTION

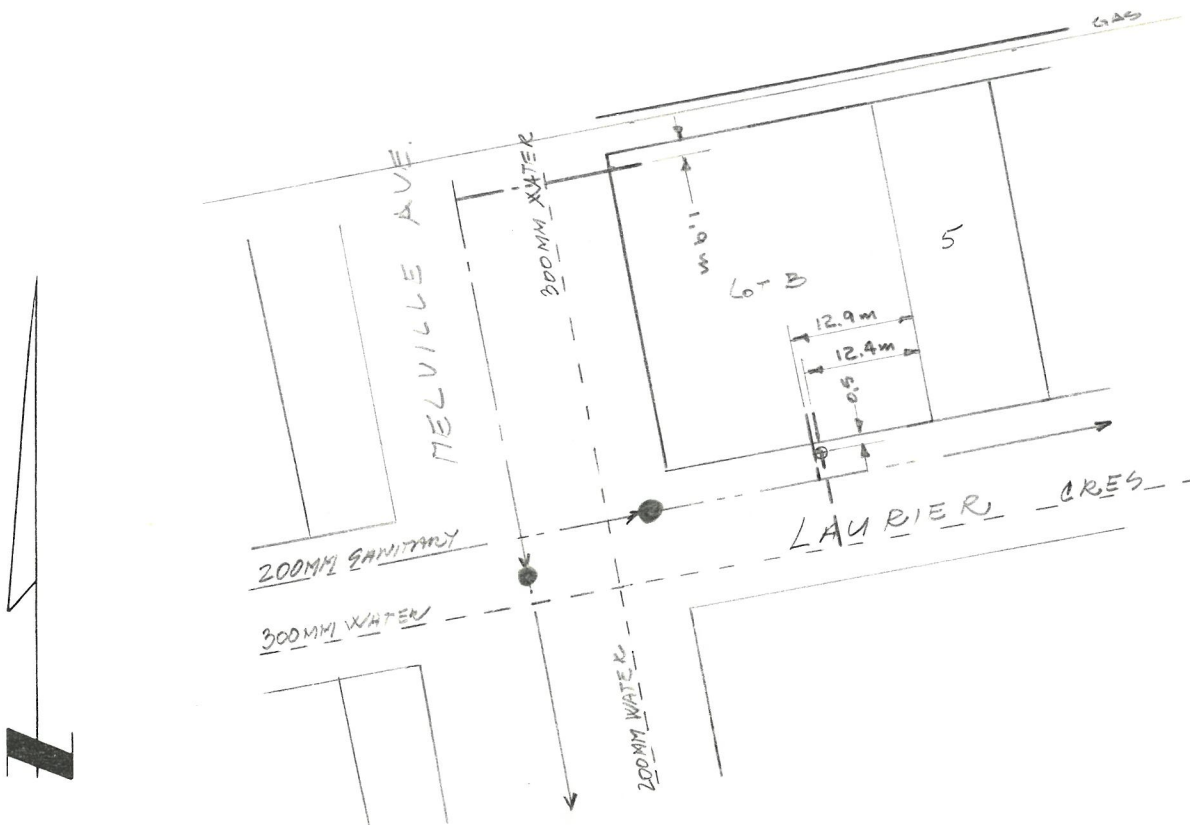
B.C. TELEPHONE 0/H UNDERGROUND CONNECTION

INLAND GAS AS SHOWN

Information Sheets:

Comments:

THE INFORMATION CONTAINED HEREIN IS FOR INTERNAL USE ONLY.  
NOT TO BE RELIED UPON UNLESS CONFIRMED BY SITE INSPECTION AND/OR INVESTIGATION



**SANITARY & STORM INVERT CALCULATIONS**

**SANITARY**

**STORM**

1. Distance from M.H. \_\_\_\_\_ to connection point is \_\_\_\_\_ ft. toward M.H. \_\_\_\_\_

2. Calculated invert of main to conn. pt. is \_\_\_\_\_

3. Main Size at connection point is \_\_\_\_\_ ins. \_\_\_\_\_

4. Conn. invert at half diameter (Crown) of main is \_\_\_\_\_

5. Add to (4) allowance of 0.2 for 1/8 bend. Adjusted invert now \_\_\_\_\_

6. Dist. from main to P/L equals \_\_\_\_\_ ft. at \_\_\_\_\_ in/ft gives rise of \_\_\_\_\_

7. Item (5) plus (6) equals Calculated Elev. of conn. inv. at P/L equals \_\_\_\_\_

3. Elev. of ref. hub top \_\_\_\_\_

4. Elev. of invert at P/line \_\_\_\_\_

5. Difference or cut below at property line \_\_\_\_\_

6. Survey Date \_\_\_\_\_ 19 \_\_\_\_\_ Book Ref. \_\_\_\_\_ by \_\_\_\_\_

7. Cut at P/Line in feet and inches \_\_\_\_\_

**Sanitary History:**

5 May 94 - Issued for Const. W.O. # 048 M. Shoran  
26 May 94 - Installed

**Water History:**

5 May 94 - 40mm issued for Const. W.O. # 048 M. Shoran  
26 May 94 - Installed

**Storm History:**

5 May 94 - 200mm issued for Const. W.O. # 048 M. Shoran  
26 May 94 - Installed