



# Lot Services Sketch

PID:

PGS164

CITY OF

## PRINCE GEORGE

Civic Address: 7040 & 7044 SOUTHRIDGE AVE

Legal Description: Lot: SL1 / SL2 / CMLX District Lot: 1605 Plan: PGS164

Service Type	Diameter (mm)	Material	Invert Elev @ Main (m)	Invert Elev @ Property Line (m)	Invert Elev @ Service End (m)	Distance into Property (m)	Installation Date
Sanitary (S1)	100	PVC	-	-	-	-	January 1981
Water (W1)	19	COPPER	-	-	-	-	January 1993
Storm (D1)	100	PVC	-	-	-	-	January 1981
Sanitary (S2)	100	PVC	-	-	-	-	January 1981
Water (W2)	19	COPPER	-	-	-	-	January 1993
Storm (D2)	Unknown	Unknown	-	-	-	-	January 1981

Sanitary Service Connection Location Notes	Storm Service Connection Location Notes
Distance from downstream SAN MH #4310: 64.32m (S1)	Distance from downstream STM MH #641: 72.97m (D1)
Distance to upstream SAN MH #4245: 29.90m (S1)	Distance to upstream STM MH #642: 25.65m (D1)
Distance from downstream SAN MH #4310: 59.25m (S2)	Distance from downstream STM MH #641: 67.29m (D2)
Distance to upstream SAN MH #4245: 34.98m (S2)	Distance to upstream STM MH #642: 31.34m (D2)

Miscellaneous Utilities			
Power	Communications	Cable	Gas
BC Hydro	TELUS	Shaw Cable	FortisBC
Underground Service	Underground Service	Underground Service	Underground Service

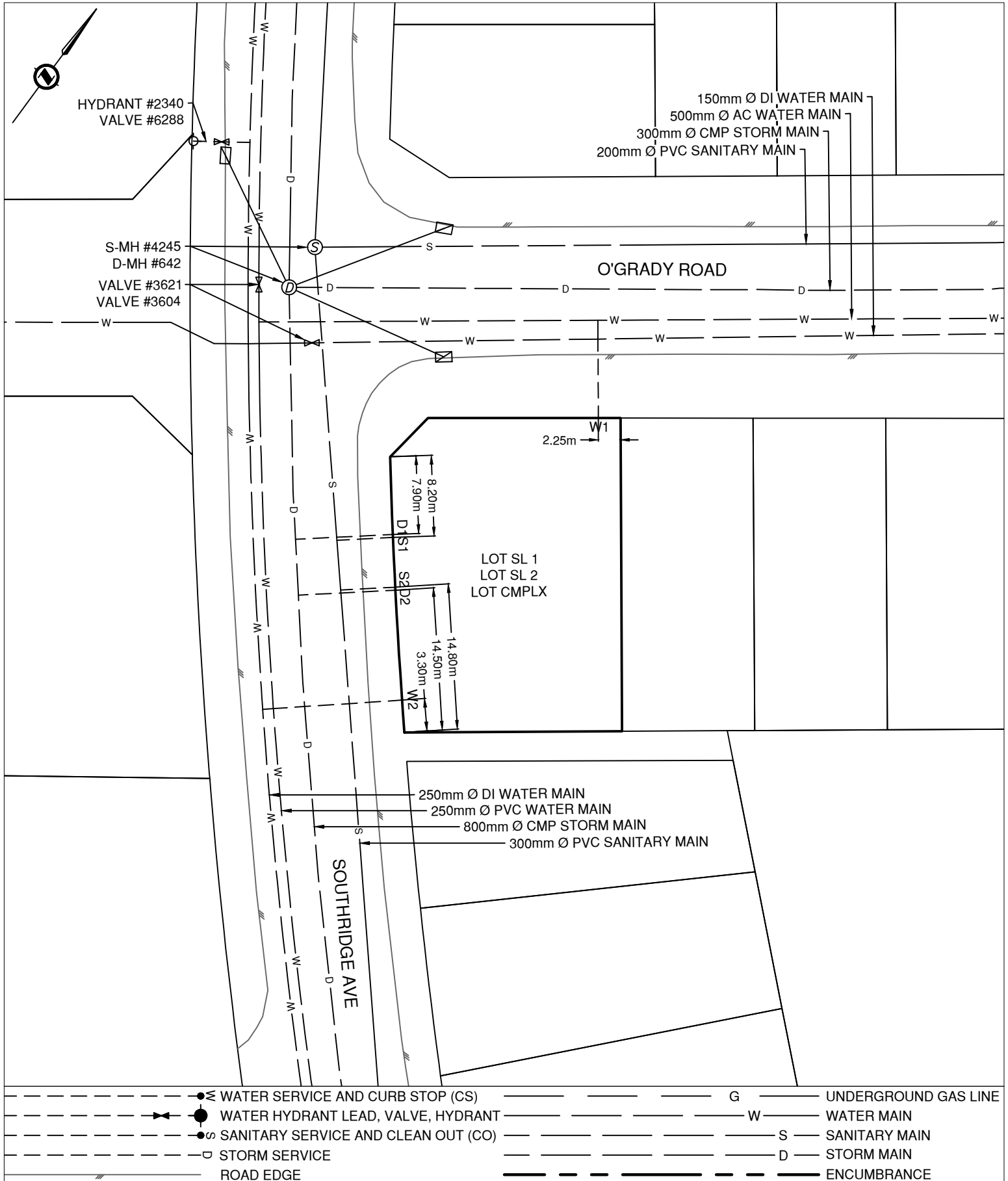
Installation By:	Unknown	Survey Date:	2022-06-30
Comments: Water Service (W1) is ~2.3m from the North East corner of Lot SL1/SL 2. Storm Service (D1) is ~7.9m from the North West corner of Lot SL1/SL2.			
Sanitary Service (S1) is ~8.2m from the North West corner of Lot SL1/SL2.			
Water Service (W2) is ~3.3m from the South West corner of Lot SL1/SL2. Storm Service (D2) is ~14.5m from the South West corner of Lot SL1/SL2.			
Sanitary Service (S2) is ~14.8m from the South West corner of Lot SL1/SL2. Inspection #4230656 completed 2022-06-30.			

**NOT TO SCALE The information contained herein is for internal use only.  
Not to be relied on unless confirmed by site inspection and/or investigation.**

**SEE PAGE 2 FOR SKETCH**

# Lot Services Sketch

**NOT TO SCALE** The information contained herein is for internal use only.  
Not to be relied on unless confirmed by site inspection and/or investigation.



—●—	WATER SERVICE AND CURB STOP (CS)	—G—	UNDERGROUND GAS LINE
—●—	WATER HYDRANT LEAD, VALVE, HYDRANT	—W—	WATER MAIN
—●—	SANITARY SERVICE AND CLEAN OUT (CO)	—S—	SANITARY MAIN
—□—	STORM SERVICE	—D—	STORM MAIN
—	ROAD EDGE	— — — — —	ENCUMBRANCE