

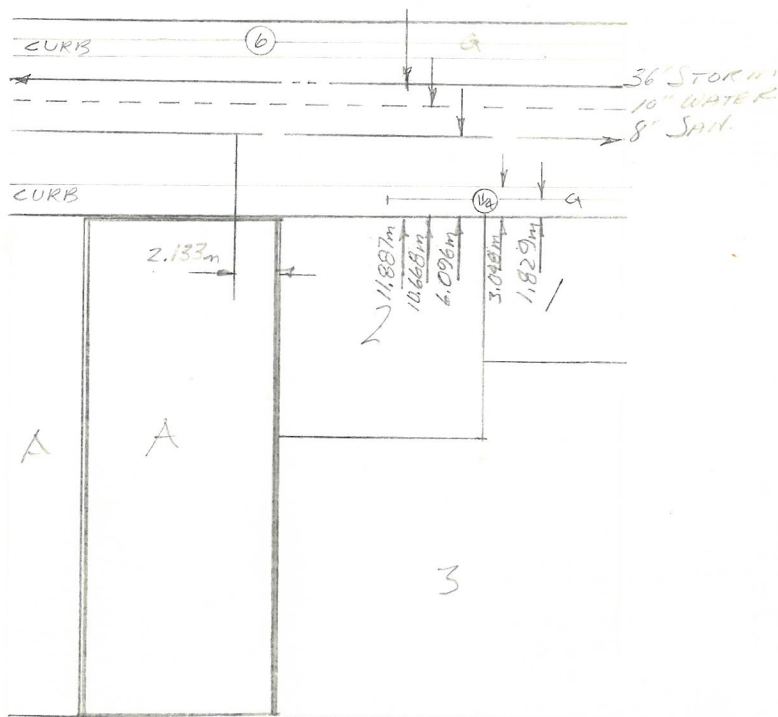
# City of Prince George HISTORY SHEET

DS

SHEET NUMBER		Roll Number			
Legal:	LOT'S <u>A</u>	BLOCK	D.L. <u>343</u>	PLAN	<u>PGS106</u>
Address: <u>1965 1st AVENUE</u>					
Sanitary Connection:	# <u>15227</u>	SIZE <u>100 mm</u>	MATERIAL	INV.	CONNECTED
Water Connection	# <u>15227</u>	SIZE <u>40 mm</u>	MATERIAL	METER	CONNECTED
Storm Connection:	# <u>1715</u>	SIZE	MATERIAL	INV.	CONNECTED
Cash Receipt No's:		WATER <u>(16782) 667</u>	SANITARY <u>382</u>	STORM <u>(16782) 668</u>	
CURB FROM PROPERTY LINE			PAVEMENT WIDTH <u>54'</u>		
B.C. HYDRO	<u>O.H.</u>	UNDERGROUND CONNECTION			
B.C. TELEPHONE	<u>O.H.</u>	UNDERGROUND CONNECTION			
INLAND GAS	<u>ON FIRST AVENUE 6" MAIN</u>				
Information Sheets:	<u>410</u>				
Comments:					

SITE      PLAN      N.T.S.

FIRST AVENUE



## SANITARY &amp; STORM INVERT CALCULATIONS

## SANITARY

## STORM

	SANITARY	STORM
	15227	
1. Distance from M.H. to connection point is ft. toward M.H.		
2. Calculated invert of main to conn. pt. is		
3. Main Size at connection point is ins.		
4. Conn. invert at half diameter (Crown) of main is		
5. Add to (4) allowance of 0.2 for 1/8 bend. Adjusted invert now		
6. Dist. from main to P/L equals ft. at in/ft. gives rise of		
7. Item (5) plus (6) equals Calculated Elev. of conn. inv. at P/L equals		
13. Elev. of ref. hub top	69.52	
14. Elev. of invert at P/line		
15. Difference or cut below at property line		
16. Survey Date 19 Book Ref. 401-87 by		424-54
17. Cut at P/Line in feet and inches	2m. 69.65	1.5m
	TOP OF MAIN	
	FLOOR	

## Sanitary History:

Aug 29/81 FOR CONSTRUCTION ONLY  
Aug 30/81 INSTALLED

## Water History:

Aug 29/81 FOR CONSTRUCTION ONLY  
Aug 30/81 INSTALLED - Common Trench w/ SAN.

## Storm History:

Aug 29/81 FOR CONSTRUCTION ONLY  
Common Trench w/ SAN - Aug 30/81 INSTALLED