

City of Prince George  
HISTORY SHEET

EPS3416 (18 PIDs)

PID: ~~028930020~~

Scale: 1:500

Strata Plan EPS3416

Legal: ~~LOT 1~~ Strata Lots 1-18

D.L.: 2014

PLAN: ~~EPS390~~

Address: 7400 CREEKSIDE WAY

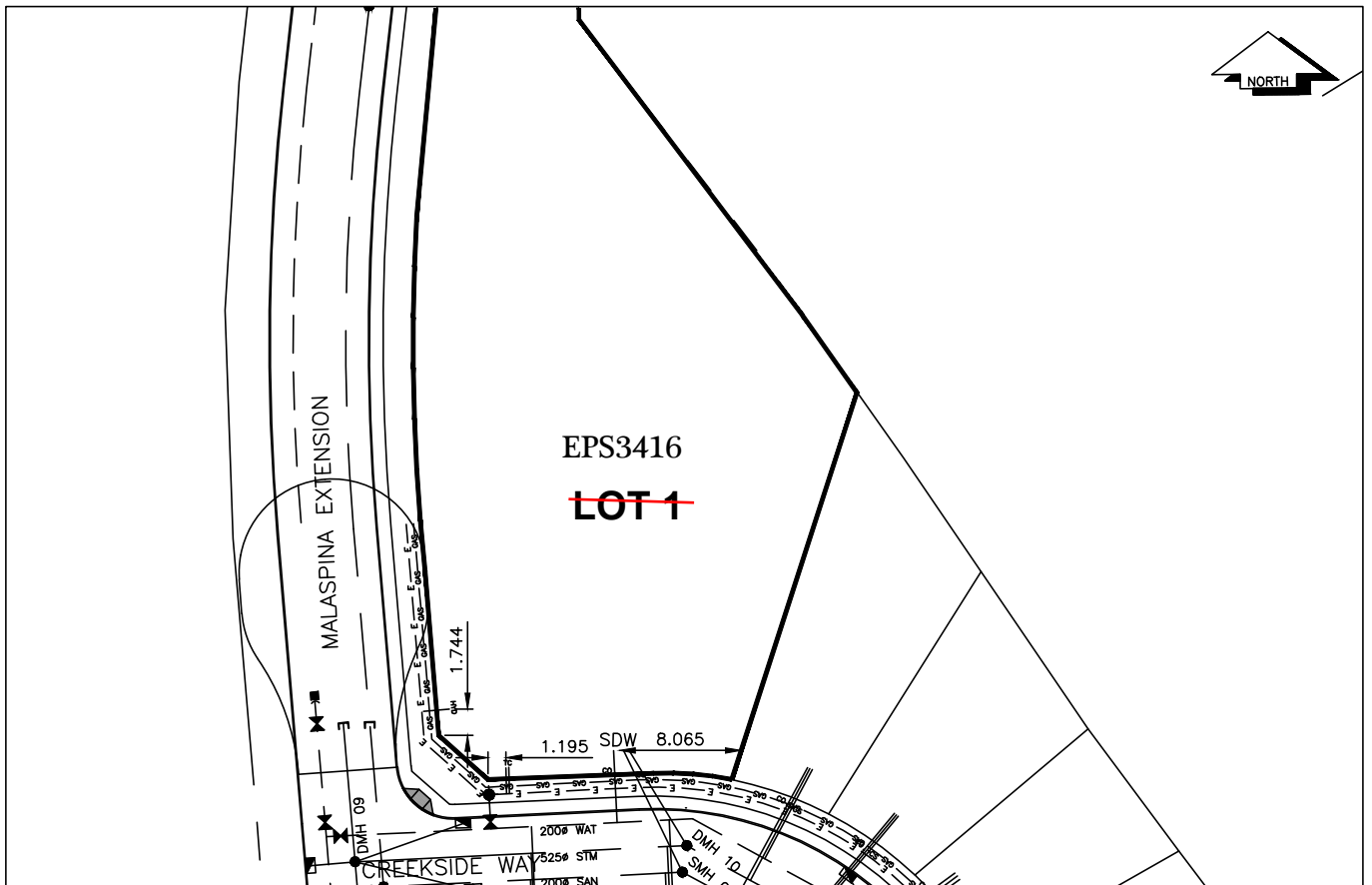
Sanitary Connection:#	SIZE: 150mmØ	MATERIAL: PVC	INV.	CONNECTED
Water Connection:#	SIZE: 150mmØ	MATERIAL: PVC	INV.	METER
Storm Connection:#	SIZE 375mmØ	MATERIAL PVC	INV.	CONNECTED
Cash Receipt No's:	WATER	SANITARY	STORM	
CURB FROM PROPERTY LINE	5m	PAVEMENT WIDTH	10m	
B.C. HYDRO	75mm DB2	U/G CONNECTION	✓	
B.C. TELEPHONE	50mm DB2	U/G CONNECTION	✓	
TERASEN	42 PROP/P.E.			

Information Sheets: REFERENCE DRAWINGS L&M ENGINEERING LIMITED JOB NO. 1140-07-04

Comments: CS<sub>O</sub> CURB STOP SDW WATER SERVICE HYDRO SERVICE GAS GAS  
CO CLEAN OUT CO STORM SERVICE CABLE SERVICE TELECOMMUNICATIONS E ELECTRICAL  
SANITARY SERVICE

THE INFORMATION CONTAINED HEREIN IS FOR INTERNAL USE ONLY.

NOT TO BE RELIED UPON UNLESS CONFIRMED BY THE SITE INSPECTION AND/OR INVESTIGATION



SANITARY, STORM & WATER SERVICE INVERTS	SANITARY	WATER	STORM
1. Distance from San. M.H. <u>06</u> toward San. M.H. <u>05</u> to lot service connection point is:	8.3m	N/A	N/A
1a.Distance from Stm. M.H. <u>10</u> toward Stm. M.H. <u>09</u> to lot service connection point is:	N/A	N/A	8.7m
2. Main Size at connection point is	200mm	200mm	525mm
3. Invert of main at conn. stub point is	581.92	583.28	583.41
4. Invert at service end is	582.32	583.81	583.38
5. Cut at property line in meters	4.23m	2.83m	3.17m
6. Survey Date: OCT 2009    Book Ref.:1140-07-04    By:FORESIGHT SURVEY & DESIGN			

**SANITARY HISTORY:**

Installed By: Fortwood Homes Ltd.

**WATER HISTORY:**

Installed By: Fortwood Homes Ltd.

**STORM HISTORY:**

Installed By: Fortwood Homes Ltd.