

**City of Prince George
HISTORY SHEET**

Installation Date:

PID:

Legal: Lot

Blk:

DL:

PL:

Address:

Fibreoptics

Depth:

Connected:

Sanitary Connection #:

Size:

Material:

Depth:

Connected:

Water Connection #:

Size:

Material:

Depth:

Connected:

Storm Connection #:

Size:

Material:

Depth:

Connected

Cash Receipt Nos: Water

Sanitary

Storm

Curb from Property Line

Shaw

BC Hydro

Telus

Terasen

Information Sheets:

Comments:

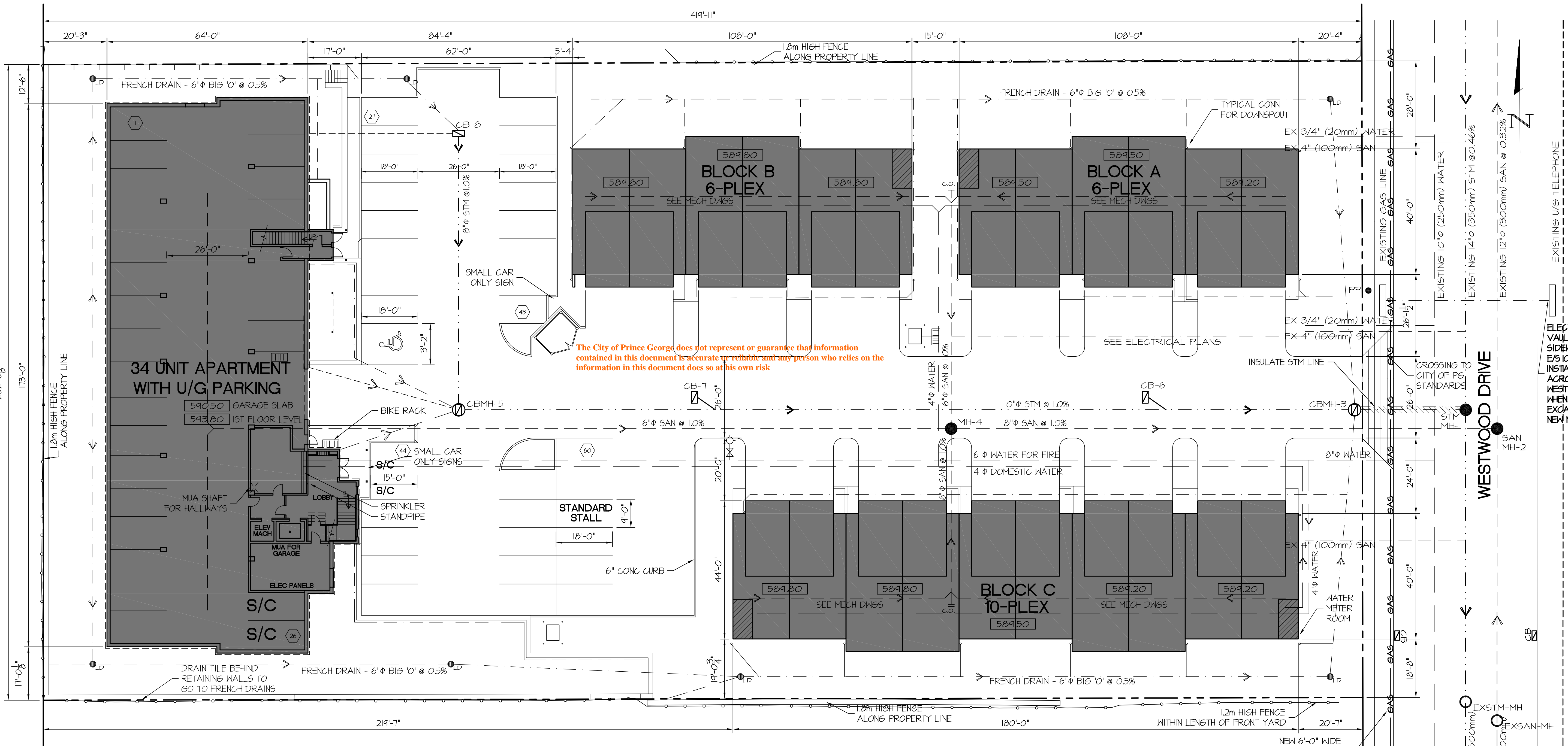
Pavement Width

U/G Connection

U/G Connection

The information contained herein is for internal use only. Not to be relied upon unless confirmed by site inspection and/or investigation.

See attached drawing



NOTE:
PERIMETER DRAIN TILE AROUND APARTMENT BUILDING TO BE CONNECTED DIRECTLY TO THE STORM SYSTEM. ALL DOWNSPOUTS TO BE COLLECTED & RUN INTO EITHER THE FRENCH DRAINS OR DIRECTLY INTO THE STORM SYSTEM

CONTRACT:
SITE WORKS CONTRACT IS TO EDGE OF BUILDINGS. UNDER BUILDING WORKS DONE UNDER SEPARATE CONTRACT.

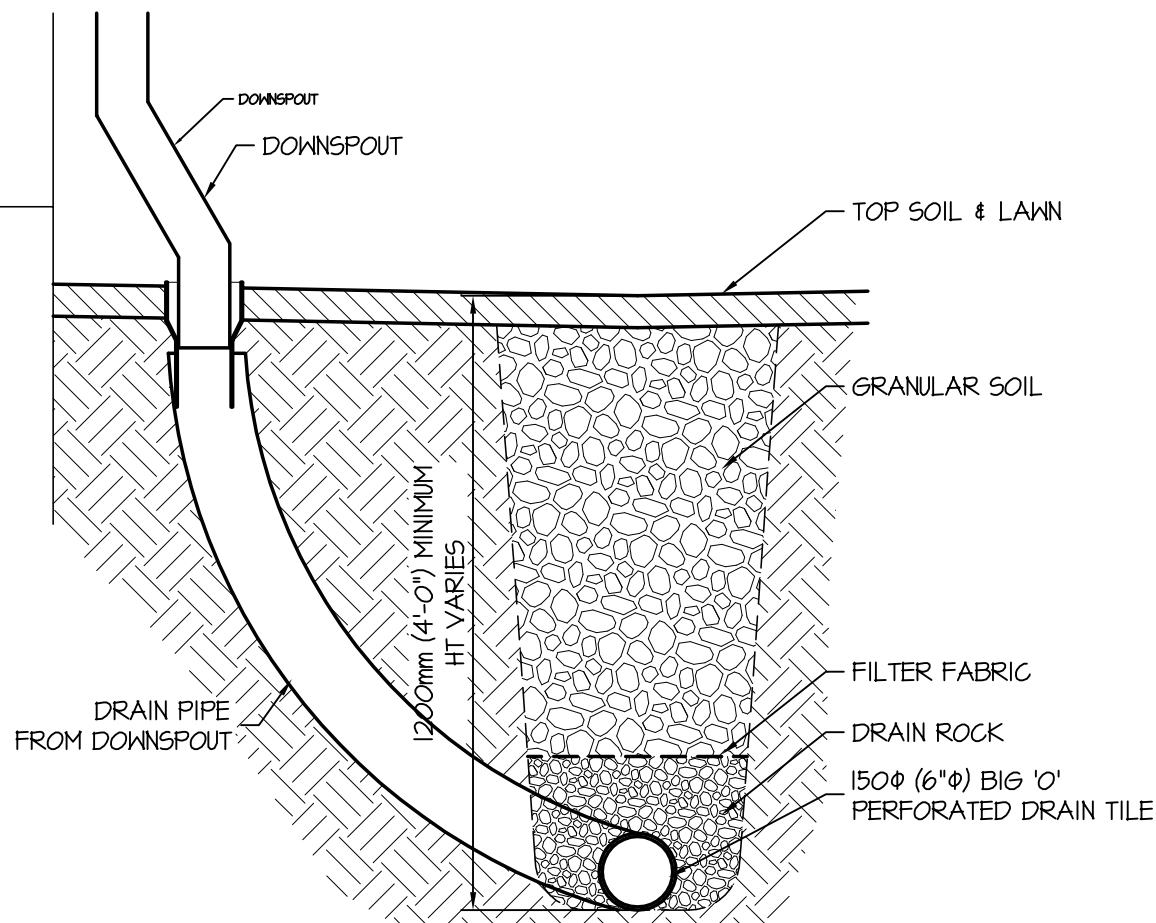
DRAWINGS TO BE READ IN CONJUNCTION WITH ELECTRICAL SITE DRAWINGS TO ENSURE ALL REQUIRED CONDUITS ARE PLACED.

SITE SERVICING PLAN
SCALE 1:200m

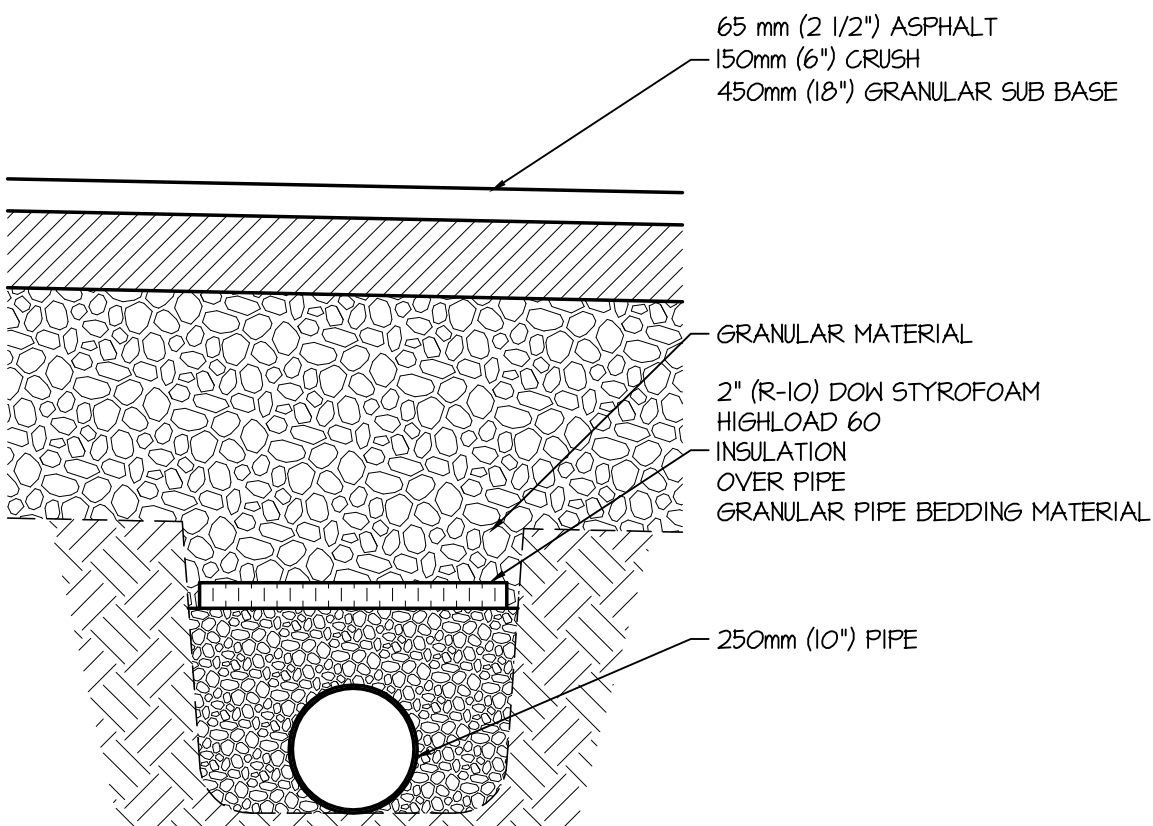
STORM	INVERT	RIM ELEV
EXSTM-MH	586.93m (1925.62')	589.12m (1932.8')
STM MH-1	587.06m (1926.05')	588.57m (1931.0')
CBMH-3	587.17m (1926.40')	588.66m (1931.30')
CBMH-5	588.04m (1929.25')	590.07m (1935.93')
CB-6	587.31m (1927.07')	588.82m (1931.82')
CB-7	587.81m (1928.50')	589.47m (1933.96')
CB-8	587.13m (1926.29')	589.71m (1934.94')

SANITARY	INVERT	
EXSAN-MH	585.64m (1921.38')	589.12m (1932.8')
SAN MH-2	585.95m (1922.41')	588.57m (1931.0')
MH-4	586.48m (1924.14')	589.10m (1932.74')

- PROPERTY LINE
- SANITARY LINE
- PERIMETER BUILDING DRAIN TILE
- FRENCH DRAIN - 6" BIG 'O' PERFORATED
- 6" BIG 'O' PERFORATED DRAIN TILE FOR DOWNSPOUTS
- STORM LINE
- WATER LINE
- GAS LINE
- ELECTRICAL LINE
- LS LIGHT STANDARD
- EXMH EXISTING MANHOLE
- MH MANHOLE
- CBMH CATCH BASIN MANHOLE
- CB CATCH BASIN
- LD LAWN DRAIN
- C.O. CLEANOUT



FRENCH DRAIN DETAIL
SCALE 1:15



INSULATED PIPE
SCALE 1:15

DWG TITLE SITE SERVICING PLAN
PROJECT 56 UNIT DEVELOPMENT
CLIENT HAYER HOMES LTD.

DATE MAY 6, 2008
SCALE 1:200m
DRAWN BY V. CASE
ARCHITECTURAL DESIGN GRAHAM GOODALL, MAIBC
ENGINEERING DESIGN FERGOUS FOLEY, P.ENG
CO-DESIGNER checked FF

PROJ. NO. 07101
DWG NO. S2
ACAD FILE 07101-SITE-08-05-06

NO.	DATE	EXPLANATION
1	09/04/22	PERMIT DRAWINGS
2	09/05/08	ISSUED FOR SITEMARKS PRICING

REVISIONS

This drawing and the copyright are the property of the ARCHITECT or the ENGINEER. No reproduction, storage in a retrieval system, or use in any form, without the written permission of the ARCHITECT or the ENGINEER. The ARCHITECT or the ENGINEER shall be held responsible for the accuracy of the information contained herein. The ARCHITECT or the ENGINEER shall be held responsible for the accuracy of the information contained herein. The ARCHITECT or the ENGINEER shall be held responsible for the accuracy of the information contained herein.

DATE ISSUED

ARCHITECT'S SEAL
Engineer's Seal Applies to Architectural Details Only

ENGINEER'S SEAL
Engineer's Seal Applies to Structural Details Only

ARCHITECT

R. GRAHAM GOODALL, BARCH, MAIBC.

3120 NINETEENTH AVENUE
PRINCE GEORGE, BC V2N 1W3
TEL (250) 544-8660
FAX (250) 544-5551

ACCESS
ENGINEERING CONSULTANTS LTD.
PRINCE GEORGE, B. C.
1484 2ND AVENUE
V2L 3B6
TEL 582-9345
FAX 583-4679