



City of Prince George HISTORY SHEET

| | |
|--------|-------------|
| PID: | 032-108-559 |
| SD/MU: | SD100680 |
| WO: | |

CITY OF
PRINCE GEORGE

CIVIC ADDRESS: 7940 SOUTHRIDGE AVE

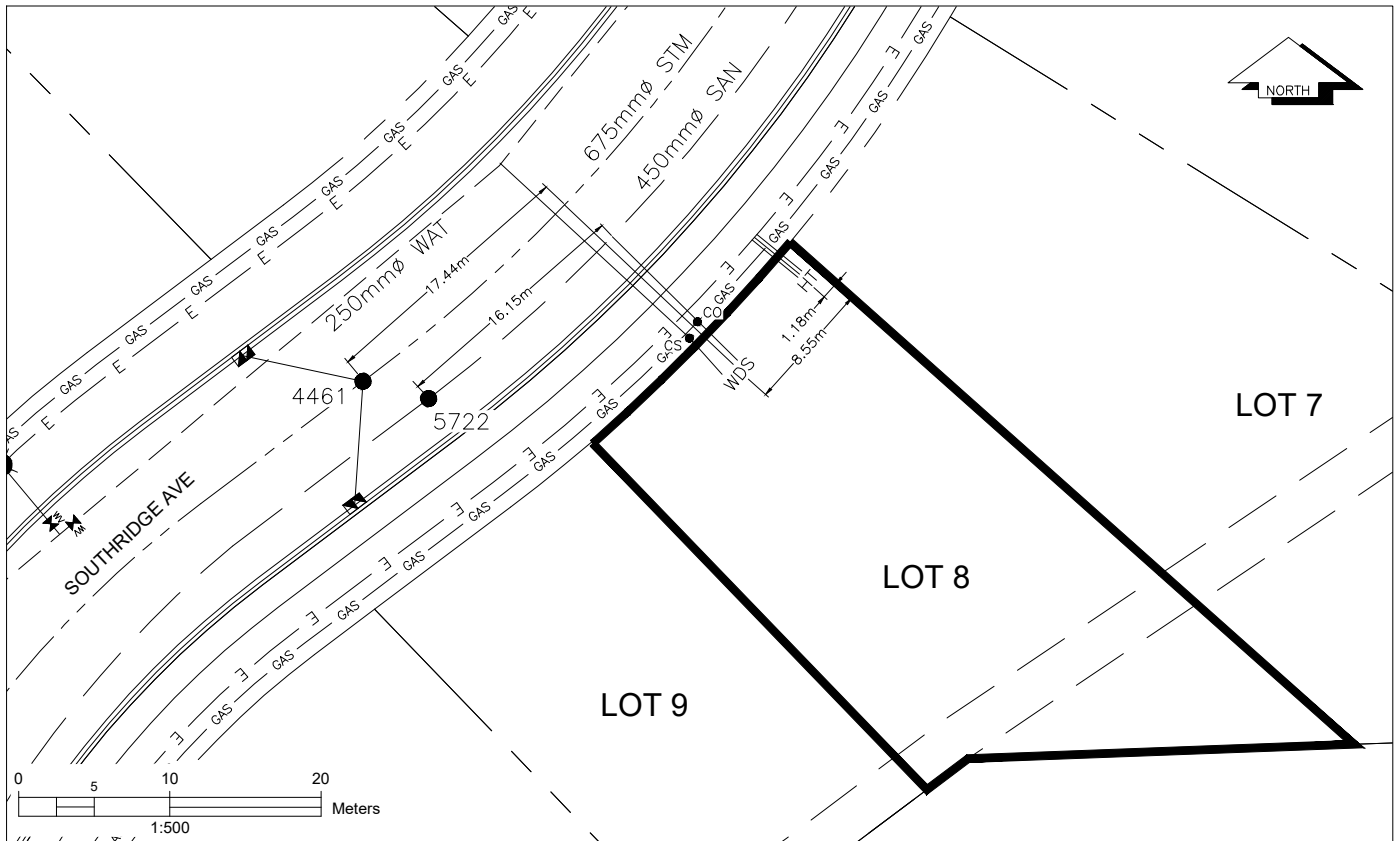
LEGAL DESCRIPTION: LOT 8 DISTRICT LOT 1605 PLAN EPP131558

| SERVICE TYPE | DIAMETER (mm) | MATERIAL | INVERT ELEV AT MAIN (m) | INVERT ELEV AT PROPERTY LINE (m) | INVERT ELEV AT SERVICE END (m) | COVER AT PROPERTY LINE (m) | DISTANCE INTO PROPERTY (m) | INSTALLATION DATE |
|--------------|---------------|----------|-------------------------|----------------------------------|--------------------------------|----------------------------|----------------------------|-------------------|
| SANITARY | 100mm | PVC | 673.10 | 673.54 | 673.65 | 2.31 | 3.00 | JUNE 2022 |
| WATER | 19mm | COPPER | 672.85 | 673.51 | 673.53 | 2.24 | 3.00 | JUNE 2022 |
| STORM | 100mm | PVC | 673.08 | 673.54 | 673.62 | 2.31 | 3.00 | JUNE 2022 |

| ELECTRICAL / COMMUNICATIONS / GAS | | | |
|-----------------------------------|----------|-------------------|-----------------------------------|
| TYPE | PROVIDER | SIZE AND MATERIAL | LOCATION (UNDERGROUND/ OVERHEAD) |
| ELECTRICAL | BC HYDRO | 75mm DB2 | UNDERGROUND |
| COMMUNICATION | TELUS | 50mm DB2 | UNDERGROUND |
| COMMUNICATION | SHAW | 50mm DB2 | UNDERGROUND |
| GAS | FORTISBC | 42 PROP/P.E. | UNDERGROUND |

| | |
|--|------------------------|
| INFORMATION SHEETS: L&M ENGINEERING LIMITED PROJECT NUMBER 1432-08 | SURVEY DATE: JUNE 2022 |
| INSTALLED BY: RIDGECREST DEVELOPMENT GROUP INC. | |
| COMMENTS: | |

THE INFORMATION CONTAINED HEREIN IS FOR INTERNAL USE ONLY.
NOT TO BE RELIED UPON UNLESS CONFIRMED BY SITE INVESTIGATION.



| | | | | |
|----------------|--|--|---|---|
| LEGEND: | <ul style="list-style-type: none"> CS ● CURB STOP CO ● CLEAN OUT | <ul style="list-style-type: none"> — W — WATER SERVICE — S — STORM SERVICE — SAN — SANITARY SERVICE | <ul style="list-style-type: none"> — H — HYDRO SERVICE — T — TELECOMMUNICATIONS | <ul style="list-style-type: none"> — GAS — GAS — E — ELECTRICAL |
|----------------|--|--|---|---|