



# City of Prince George HISTORY SHEET

PID:	032-108-494
SD/MU:	SD100680
WO:	

CITY OF  
PRINCE GEORGE

CIVIC ADDRESS: 7810 SOUTHRIDGE AVE

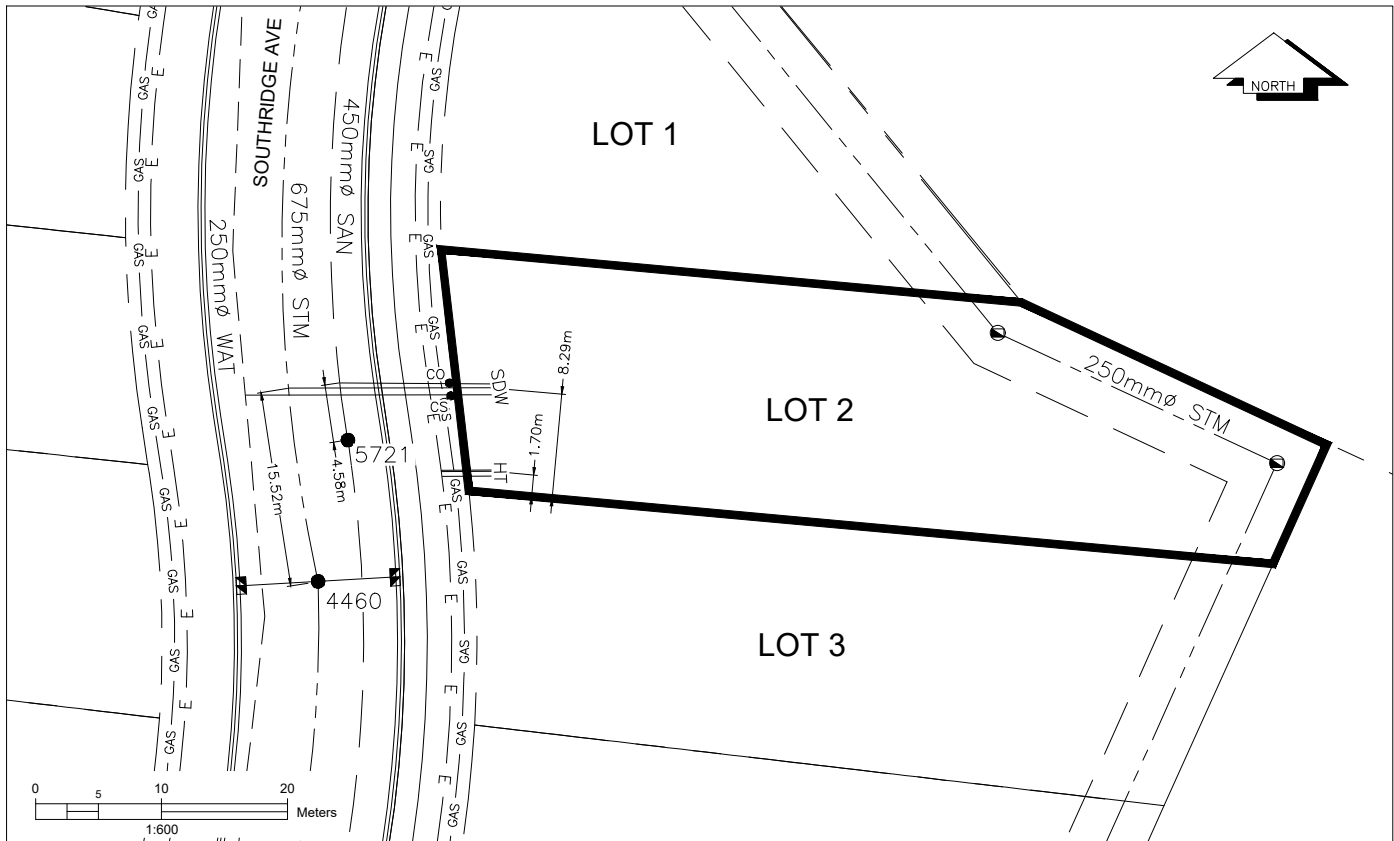
LEGAL DESCRIPTION: LOT 2 DISTRICT LOT 1605 PLAN EPP131558

SERVICE TYPE	DIAMETER (mm)	MATERIAL	INVERT ELEV AT MAIN (m)	INVERT ELEV AT PROPERTY LINE (m)	INVERT ELEV AT SERVICE END (m)	COVER AT PROPERTY LINE (m)	DISTANCE INTO PROPERTY (m)	INSTALLATION DATE
SANITARY	100mm	PVC	671.95	673.42	673.48	2.00	3.00	JUNE 2022
WATER	19mm	COPPER	672.30	672.90	673.47	2.50	3.00	JUNE 2022
STORM	100mm	PVC	671.93	673.41	673.47	2.00	3.00	JUNE 2022

ELECTRICAL / COMMUNICATIONS / GAS			
TYPE	PROVIDER	SIZE AND MATERIAL	LOCATION ( UNDERGROUND/ OVERHEAD)
ELECTRICAL	BC HYDRO	75mm DB2	UNDERGROUND
COMMUNICATION	TELUS	50mm DB2	UNDERGROUND
COMMUNICATION	SHAW	50mm DB2	UNDERGROUND
GAS	FORTISBC	42 PROP/P.E.	UNDERGROUND

INFORMATION SHEETS: L&M ENGINEERING LIMITED PROJECT NUMBER 1432-08	SURVEY DATE: JUNE 2022
INSTALLED BY: RIDGECREST DEVELOPMENT GROUP INC.	
COMMENTS:	

THE INFORMATION CONTAINED HEREIN IS FOR INTERNAL USE ONLY.  
NOT TO BE RELIED UPON UNLESS CONFIRMED BY SITE INVESTIGATION.



<b>LEGEND:</b>	CS ● CURB STOP	— W — WATER SERVICE	— H — HYDRO SERVICE	— GAS — GAS
	CO ● CLEAN OUT	— S — STORM SERVICE	— T — TELECOMMUNICATIONS	— E — ELECTRICAL
		— SD — SANITARY SERVICE		