



City of Prince George History Sheet

PID:	031155626
SD/MU:	
WO:	

Civic Address: 2235, 2237 Quince St

Legal Description: Lot: PCL B (CA8310778) Block: 9 District Lot: 932 Plan: 796

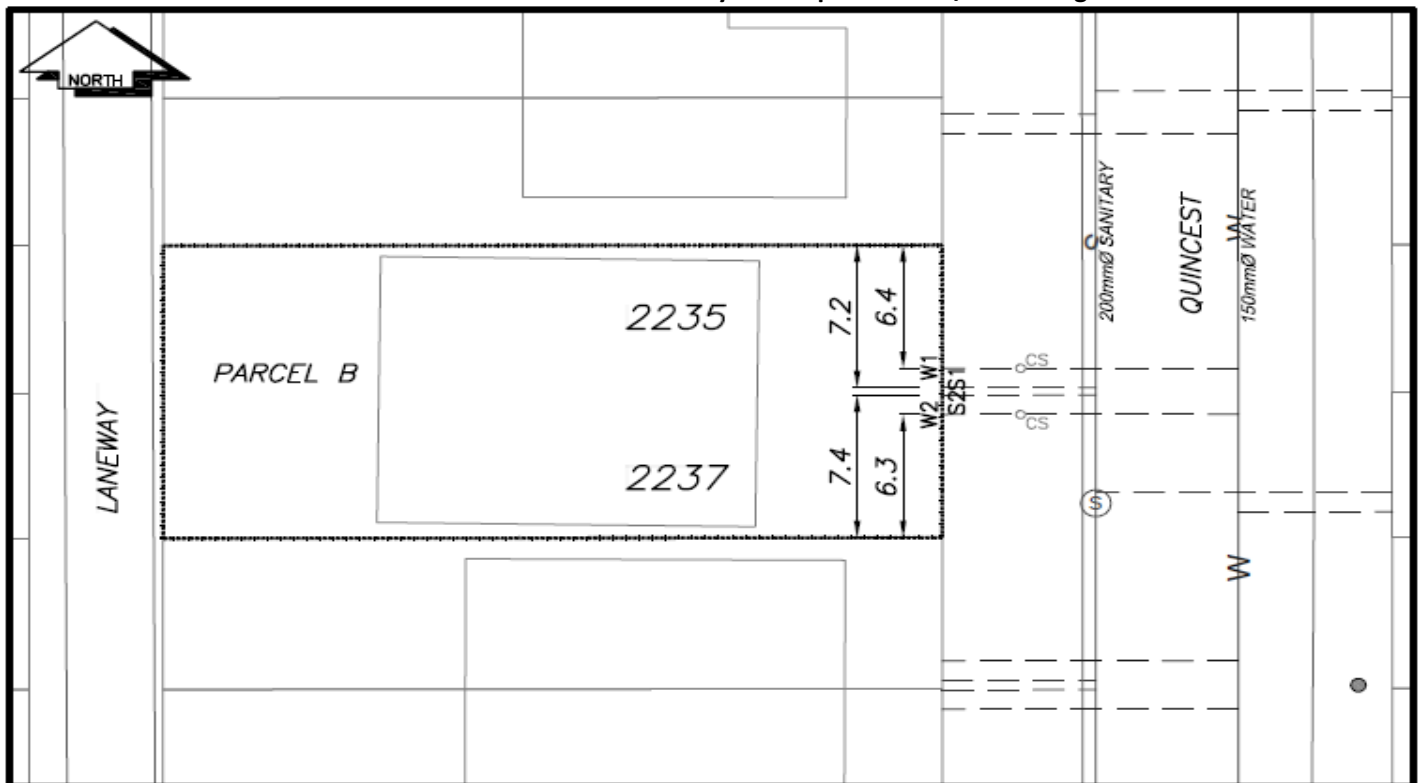
Service Type	Diameter (mm)	Material	Invert Elev at main (m)	Invert Elev at property line (m)	Invert Elev at service end (m)	Distance into property (m)	Installation Date
Sanitary (S1)	100mm	AC	-	-	-	-	January 1970
Sanitary (S2)	100mm	AC	-	-	-	-	January 1970
Water (W1)	20mm	Copper	-	-	-	-	January 1970
Water (W2)	20mm	Copper	-	-	-	-	January 1970
Storm	N/A	N/A	-	-	-	-	

Service Connection Location				Sanitary (m)	Storm (m)
Distance from downstream San MH	3463	towards upstream San MH	3460	60.67	
Distance from downstream San MH	3463	towards upstream San MH	3460	5.70	

Power	Size	Communications	Size	Cable	Size	Gas	Size
BC Hydro	-	Telus	-	Shaw	-	FortisBC	-
Overhead Service		Overhead Service		Overhead Service			

Installed by:	Survey Date:	-
Comments:		

NOT TO SCALE The information contained herein is for internal use only.
Not to be relied on unless confirmed by site inspection and/or investigation.



CS	CURB STOP	—W—	WATER SERVICE	—S—	SANITARY SERVICE	—G—	GAS
CO	CLEAN OUT	—S—	SANITARY SERVICE	—W—	WATER SERVICE	—	ENCUMBRANCE
WV	WATER VALVE	—F—	FIRE HYDRANT				

NOT TO SCALE