



City of Prince George
History Sheet

PID:	31121063
SD/MU:	
WO:	

Civic Address: 2337, 2333 Quince St

Legal Description: Lot: PCL C (CA8236689) Block: 13 District Lot: 932 Plan: 796

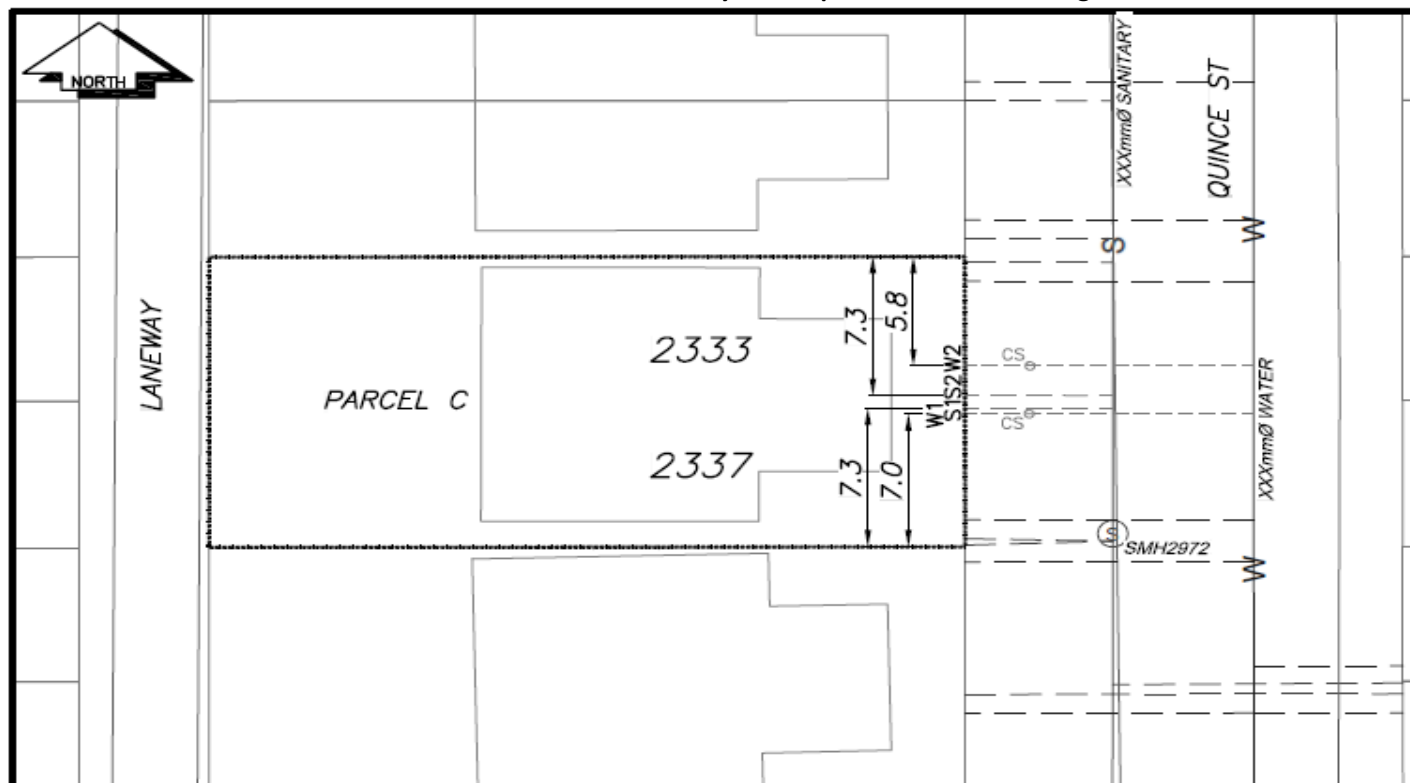
Service Type	Diameter (mm)	Material	Invert Elev at main (m)	Invert Elev at property line (m)	Invert Depth at service end (m)	Distance into property (m)	Installation Date
Sanitary (S1)	100mm	AC	-	566.01	2.82	-	December 1969
Water (W1)	20mm	Copper	-	-	-	-	December 1969
Sanitary (S2)	100mm	AC	-	565.08	3.82	-	December 1969
Water (W2)	20mm	Copper	-	-	-	-	December 1969
Storm	N/A	N/A	-	-	-	-	

Service Connection Location				Sanitary (m)	Storm (m)
Distance from downstream San MH	2967	towards upstream San MH	2972	62.64	
Distance from downstream San MH	2967	towards upstream San MH	2972	62.03	

Power	Size	Communications	Size	Cable	Size	Gas	Size
BC Hydro	-	Telus	-	Shaw	-	FortisBC	-
Overhead Service		Overhead Service		Overhead Service			

Installed by:	Survey Date:	-
Comments:		

NOT TO SCALE The information contained herein is for internal use only.
Not to be relied on unless confirmed by site inspection and/or investigation.



CS ^o CURB STOP	—S— WATER SERVICE	—S— STORM SERVICE
CO ^o CLEAN OUT	- - - - - SANITARY SERVICE	—G— GAS
⊗ WATER VALVE	⊗ FIRE HYDRANT	- - - - - ENCUMBRANCE

NOT TO SCALE