



CITY OF
PRINCE GEORGE

City of Prince George HISTORY SHEET

| | |
|--------|-------------|
| PID: | 031-080-936 |
| SD/MU: | SD100581 |
| WO: | |

CIVIC ADDRESS: 9000 TATLOW PLACE

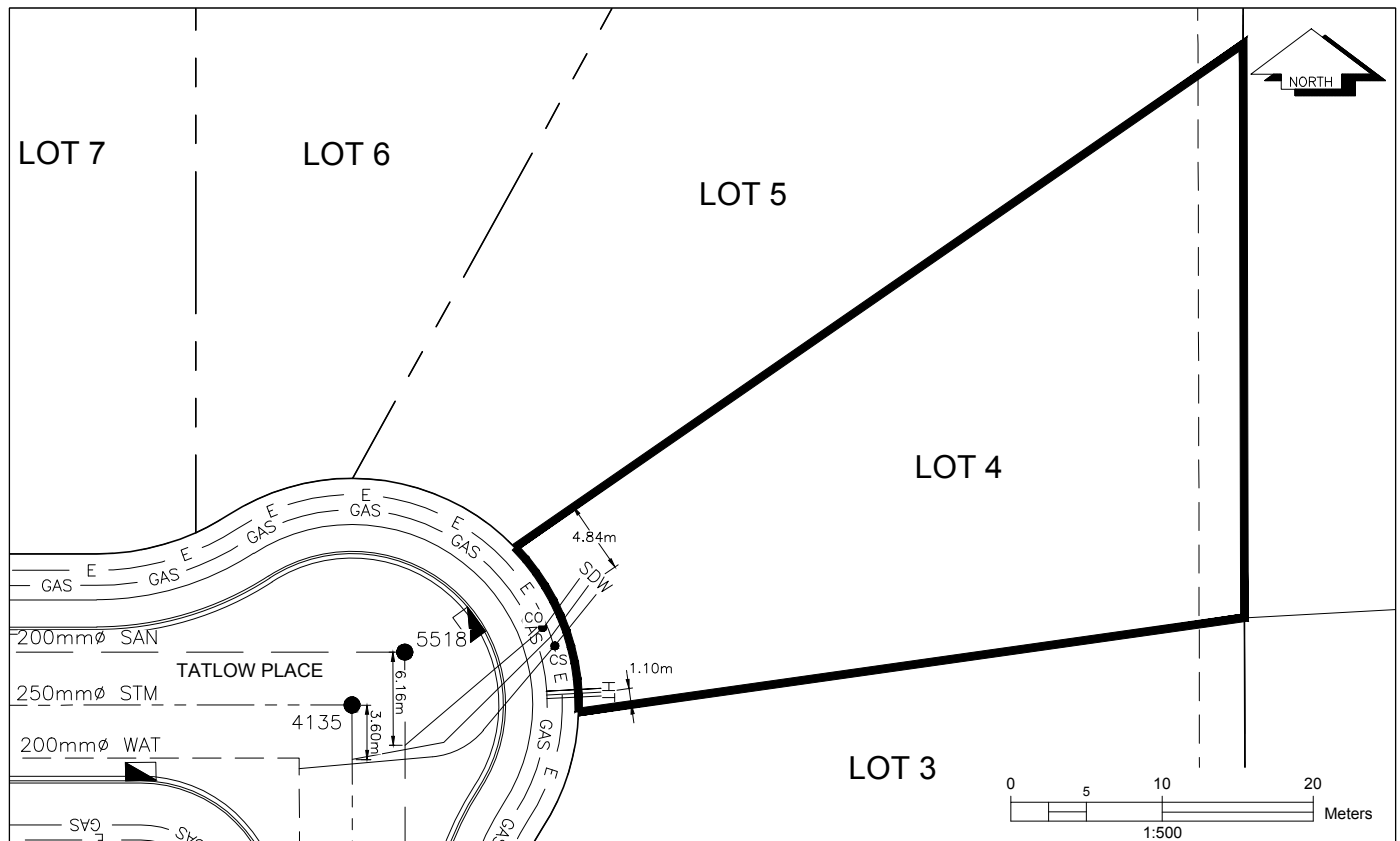
LEGAL DESCRIPTION: LOT 4 DISTRICT LOT 2425 PLAN EPP98524

| SERVICE TYPE | DIAMETER (mm) | MATERIAL | INVERT ELEV AT MAIN (m) | INVERT ELEV AT PROPERTY LINE (m) | INVERT ELEV AT SERVICE END (m) | COVER AT PROPERTY LINE (m) | DISTANCE INTO PROPERTY (m) | INSTALLATION DATE |
|--------------|---------------|----------|-------------------------|----------------------------------|--------------------------------|----------------------------|----------------------------|-------------------|
| SANITARY | 100 | PVC | 764.13 | 764.52 | 764.61 | 2.13 | 3.00 | JULY 2019 |
| WATER | 19 | COPPER | 763.57 | 764.21 | 764.28 | 2.52 | 3.00 | JULY 2019 |
| STORM | 100 | PVC | 764.18 | 764.71 | 764.79 | 2.00 | 3.00 | JULY 2019 |

| ELECTRICAL / COMMUNICATIONS / GAS | | | |
|-----------------------------------|----------|-------------------|-----------------------------------|
| TYPE | PROVIDER | SIZE AND MATERIAL | LOCATION (UNDERGROUND/ OVERHEAD) |
| ELECTRICAL | BC HYDRO | 75mm DB2 | UNDERGROUND |
| COMMUNICATION | TELUS | 50mm DB2 | UNDERGROUND |
| COMMUNICATION | SHAW | 50mm DB2 | UNDERGROUND |
| GAS | FORTISBC | 42 PROP/P.E. | UNDERGROUND |

| | |
|--------------------------------------------------------------------|------------------------|
| INFORMATION SHEETS: L&M ENGINEERING LIMITED PROJECT NUMBER 1631-02 | SURVEY DATE: JULY 2019 |
| INSTALLED BY: COREHAVEN HOMES | |
| COMMENTS: | |

THE INFORMATION CONTAINED HEREIN IS FOR INTERNAL USE ONLY.
NOT TO BE RELIED UPON UNLESS CONFIRMED BY SITE INVESTIGATION.



| LEGEND: | | | |
|---------|-----------|---------|--------------------|
| CS | CURB STOP | W | WATER SERVICE |
| CO | CLEAN OUT | S | STORM SERVICE |
| | | SAN | SANITARY SERVICE |
| | | HYDRO | HYDRO SERVICE |
| | | TELECOM | TELECOMMUNICATIONS |
| | | GAS | GAS |
| | | E | ELECTRICAL |
| | | LB | LAWN BASIN |