



City of Prince George History Sheet

| | |
|------|---------------|
| PID: | 031022472 |
| MU: | 102216 |
| WO: | 101060/101061 |

Civic Address: 4591 Martin Rd

Legal Description: Lot: B District Lot: 2424 Plan: EPP91389

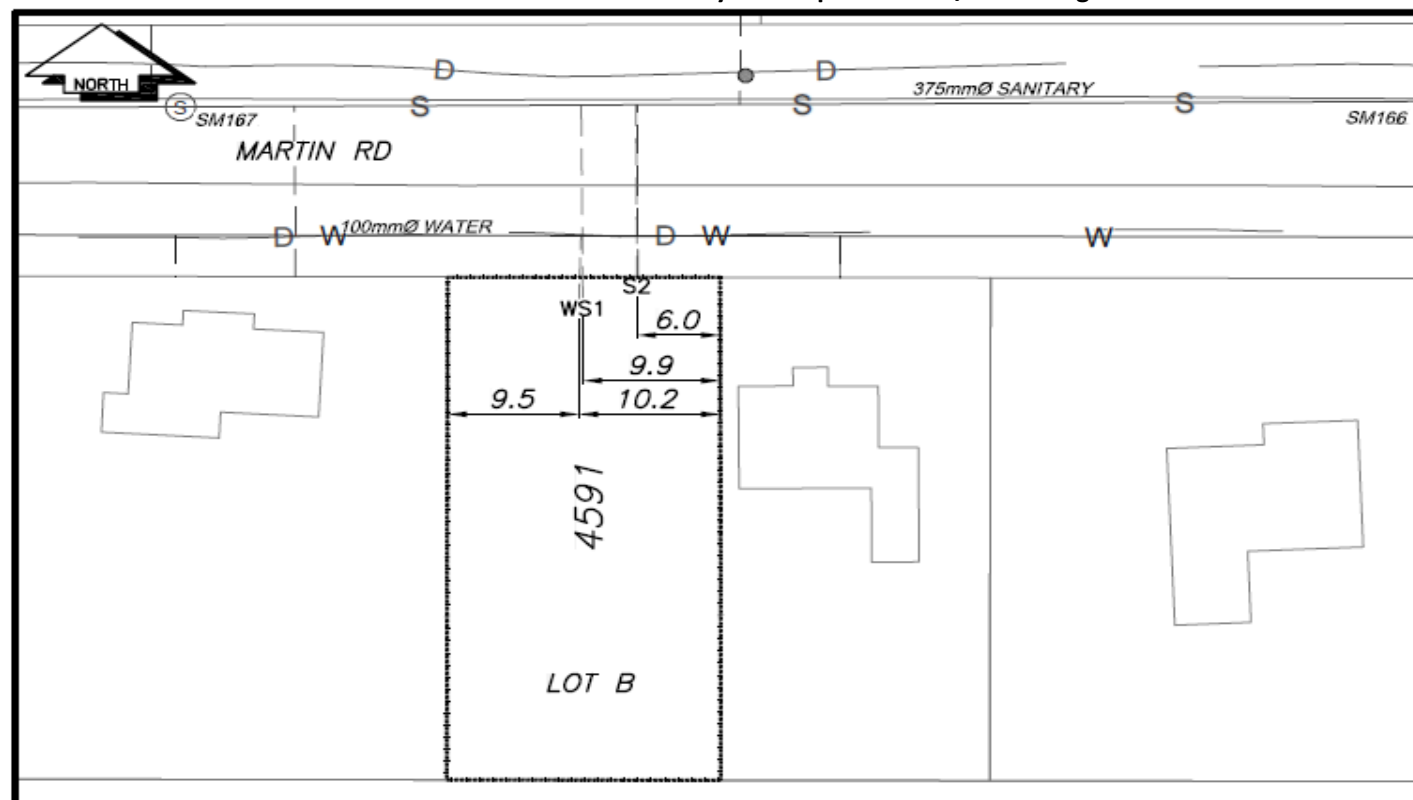
| Service Type | Diameter (mm) | Material | Invert Elev at main (m) | Invert Elev at property line (m) | Invert Elev at service end (m) | Distance into property (m) | Installation Date |
|---------------|---------------|----------|-------------------------|----------------------------------|--------------------------------|----------------------------|-------------------|
| Sanitary (S1) | 100mm | PVC | 752.13 | 754.33 | 754.35 | 1.60 | October 2019 |
| Sanitary (S2) | 100mm | AC | - | - | - | - | December 1979 |
| Water | 20mm | Copper | 754.89 | 754.27 | 754.29 | 1.60 | October 2019 |
| Storm | N/A | N/A | - | - | - | - | |

| Service Connection Location | | | | Sanitary (m) | Storm (m) |
|---------------------------------|-----|-------------------------|-----|--------------|-----------|
| Distance from downstream San MH | 166 | towards upstream San MH | 167 | 61.15 | |
| Distance from downstream Stm MH | - | towards upstream Stm MH | - | | |

| Power | Size | Communications | Size | Cable | Size | Gas | Size |
|------------------|------|------------------|------|------------------|------|----------|------|
| BC Hydro | - | Telus | - | Shaw | - | FortisBC | - |
| Overhead Service | | Overhead Service | | Overhead Service | | | |

| | | | |
|--|--------------------------|--------------|---|
| Installed by: | Installed by City forces | Survey Date: | - |
| Sanitary service S2 services Lot A, 4585 Martin Rd | | | |
| | | | |
| | | | |

NOT TO SCALE The information contained herein is for internal use only.
Not to be relied on unless confirmed by site inspection and/or investigation.



| | | |
|--------------|------------------|---------------|
| CS CURB STOP | WATER SERVICE | STORM SERVICE |
| CO CLEAN OUT | SANITARY SERVICE | GAS |
| WATER VALVE | FIRE HYDRANT | ENCUMBRANCE |

NOT TO SCALE