

City of Prince George

HISTORY SHEET

PID:	030-587-018
SD/MU:	
WO:	

CIVIC ADDRESS: 2545 REDFIELD PLACE

LEGAL DESCRIPTION: LOT# 2 DISTRICT LOT 4377 PLAN EPP56990

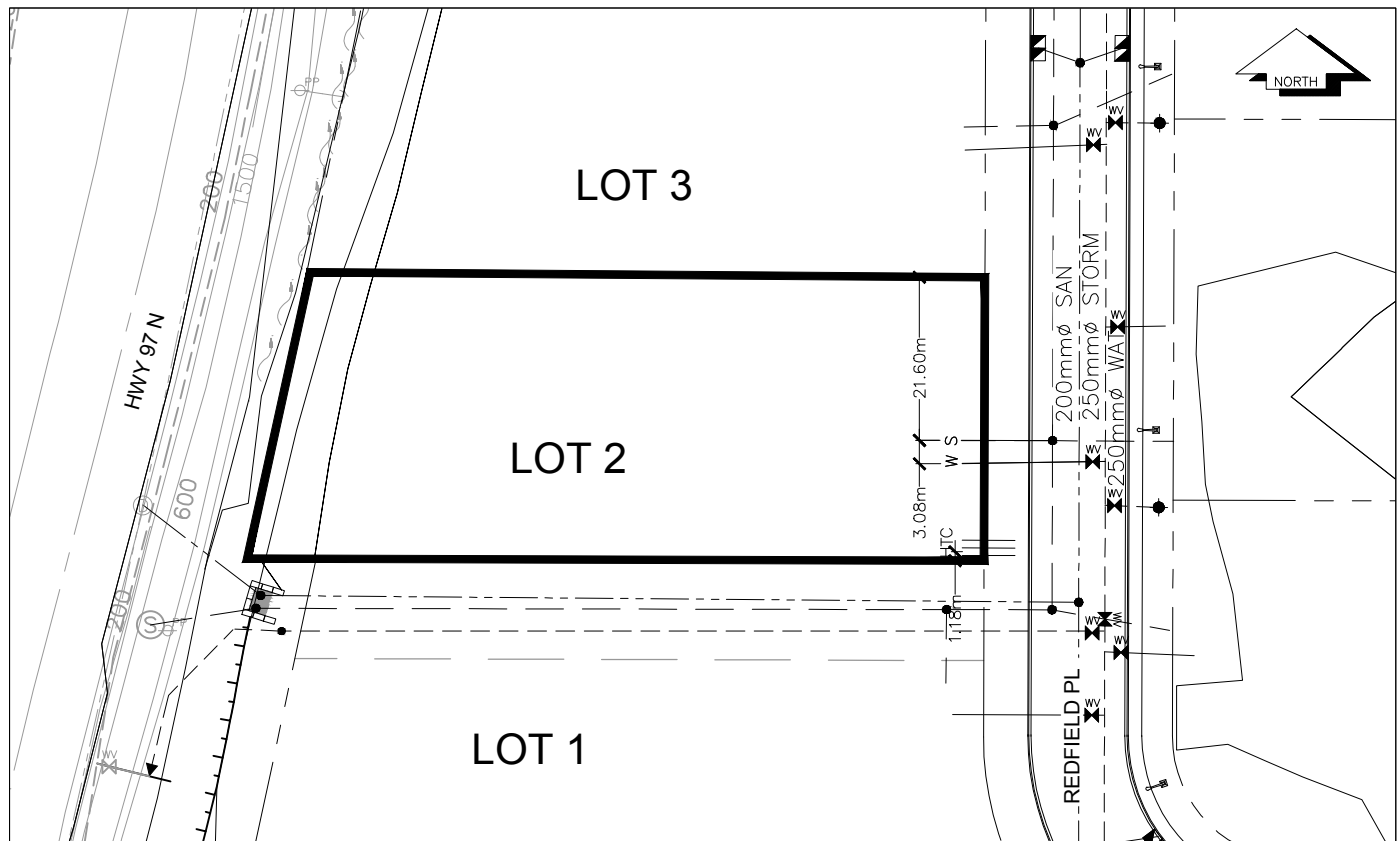
SERVICE TYPE	DIAMETER (mm)	MATERIAL	INVERT ELEV AT MAIN (m)	INVERT ELEV AT PROPERTY LINE (m)	INVERT ELEV AT SERVICE END (m)	COVER AT PROPERTY LINE (m)	DISTANCE INTO PROPERTY (m)	INSTALLATION DATE
SANITARY	150mm	PVC	638.70m	638.74m	638.75m	2.30m	3.3m	AUG 2014
WATER	150mm	PVC	637.57m	637.69m	637.71m	3.31m	2.9m	AUG 2014
STORM	*SEE COMMENTS		N/A	N/A	N/A	N/A	N/A	N/A

ELECTRICAL / COMMUNICATIONS / GAS

TYPE	PROVIDER	SIZE AND MATERIAL	LOCATION (UNDERGROUND/ OVERHEAD)
ELECTRICAL	BC HYDRO	75mm DB2	UNDERGROUND
COMMUNICATION	TELUS	50mm DB2	UNDERGROUND
COMMUNICATION	SHAW	50mm DB2	UNDERGROUND
GAS	FORTISBC	42 PROP/P.E.	UNDERGROUND

INFORMATION SHEETS: L&M ENGINEERING LIMITED PROJECT NUMBER 1426-03	SURVEY DATE: 2015
INSTALLED BY: R.F. KLEIN & SONS	
COMMENTS: MUNICIPAL STORM SEWER CONNECTIONS ARE NOT REQUIRED. ALL STORM DRAINAGE IS TO BE ACCOMODATED ONSITE THROUGH GROUNDWATER INFILTRATION.	

THE INFORMATION CONTAINED HEREIN IS FOR INTERNAL USE ONLY.
NOT TO BE RELIED UPON UNLESS CONFIRMED BY SITE INVESTIGATION.



LEGEND:

- | | | | | | | | | | | | | |
|----|-------------|----|----|---|------------------|----|---|--------------------|-------|-----|-------|------------|
| CS | ● CURB STOP | —— | SD | W | WATER SERVICE | —— | H | HYDRO SERVICE | ----- | GAS | ----- | GAS |
| CO | ● CLEAN OUT | —— | SD | S | STORM SERVICE | —— | T | TELECOMMUNICATIONS | ----- | E | ----- | ELECTRICAL |
| | | —— | SD | S | SANITARY SERVICE | | | | | | | |