



City of Prince George
History Sheet

PID:	030339464
SD/MU:	
WO:	

Civic Address:

7385 Boundary Avenue

Legal Description:

Lot 3, District Lot 748, Cariboo District, Plan EPP67262

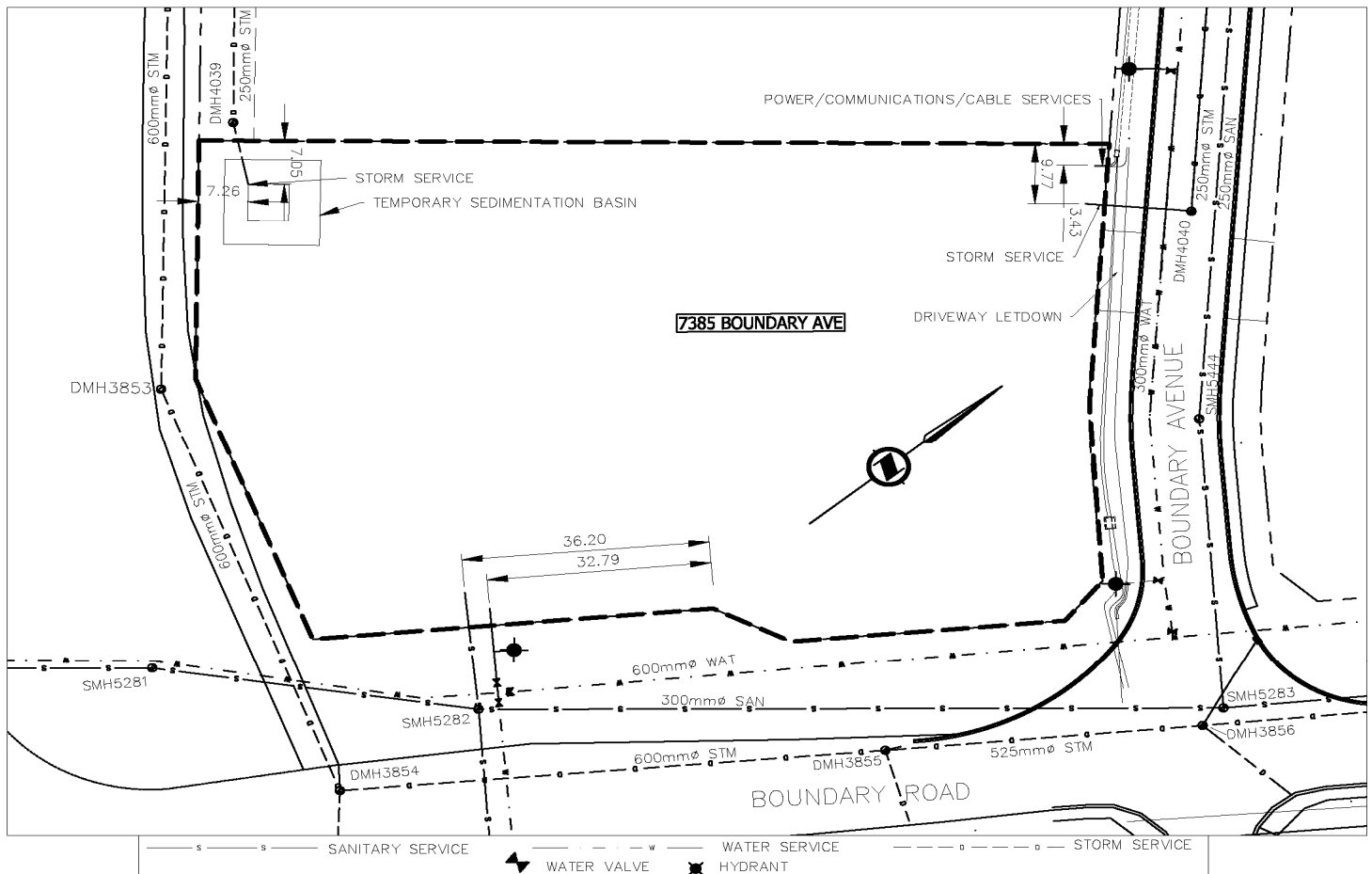
Service Type	Diameter (mm)	Material	Invert Elev at main (m)	Invert Elev at property line (m)	Invert Elev at service end (m)	Distance into property (m)	Installation Date
Sanitary	200mm	PVC	665.39	665.52	665.58	5.74	2010
Water	300mm	PVC	665.11	664.71	664.61	2.77	2010
Storm West/Pond	250mm	PVC	665.18	665.20	665.24	2.78	2016
Storm Bndry Ave.	250mm	PVC	667.28	667.41	667.43	2.78	2015

Service Connection Location				Sanitary (m)	Storm (m)
Distance from downstream San MH	5282	towards upstream San MH	5282	0.00	
Distance from downstream Stm MH (Pond)	4040	towards upstream Stm MH (Pond)	4040		0.00
Distance from downstream Stm MH	4039	towards upstream Stm MH	4039		0.00

Power	Size	Communications	Size	Cable	Size	Gas	Size
BC Hydro	3x75mm DB2	Telus	1x100mm DB2	Shaw	2x100mm DB2	FortisBC	TBD
Underground Service		Underground Service		Underground Service			

Installed by:	Teare Creek Contracting & Western Industrial Contractors (WIC)	Survey Date:	-
Comments:	Water & Sanitary Services installed by WIC as part of Boundary Road project.		

NOT TO SCALE The information contained herein is for internal use only.
Not to be relied on unless confirmed by site inspection and/or investigation.



NOT TO SCALE