



CITY OF  
PRINCE GEORGE

## City of Prince George HISTORY SHEET

|        |             |
|--------|-------------|
| PID:   | 030-301-513 |
| SD/MU: | SD100461    |
| WO:    |             |

CIVIC ADDRESS: 6283 ORBIN PLACE

LEGAL DESCRIPTION: LOT 23 DISTRICT LOT 4028 PLAN EPP68896

| SERVICE TYPE | DIAMETER (mm) | MATERIAL | INVERT ELEV AT MAIN (m) | INVERT ELEV AT PROPERTY LINE (m) | INVERT ELEV AT SERVICE END (m) | COVER AT PROPERTY LINE (m) | DISTANCE INTO PROPERTY (m) | INSTALLATION DATE |
|--------------|---------------|----------|-------------------------|----------------------------------|--------------------------------|----------------------------|----------------------------|-------------------|
| SANITARY     | 100           | PVC      | 729.26                  | 729.40                           | 729.49                         | 2.33                       | 3.00                       | JULY 2015         |
| WATER        | 19            | COPPER   | 729.22                  | 729.48                           | 729.38                         | 2.34                       | 3.00                       | JULY 2015         |
| STORM        | 100           | PVC      | 729.20                  | 729.40                           | 729.50                         | 2.33                       | 3.00                       | JULY 2015         |

### ELECTRICAL / COMMUNICATIONS / GAS

| TYPE          | PROVIDER | SIZE AND MATERIAL | LOCATION ( UNDERGROUND/ OVERHEAD) |
|---------------|----------|-------------------|-----------------------------------|
| ELECTRICAL    | BC HYDRO | 75mm DB2          | UNDERGROUND                       |
| COMMUNICATION | TELUS    | 50mm DB2          | UNDERGROUND                       |
| COMMUNICATION | SHAW     | 50mm DB2          | UNDERGROUND                       |
| GAS           | FORTISBC | 42 PROP/P.E.      | UNDERGROUND                       |

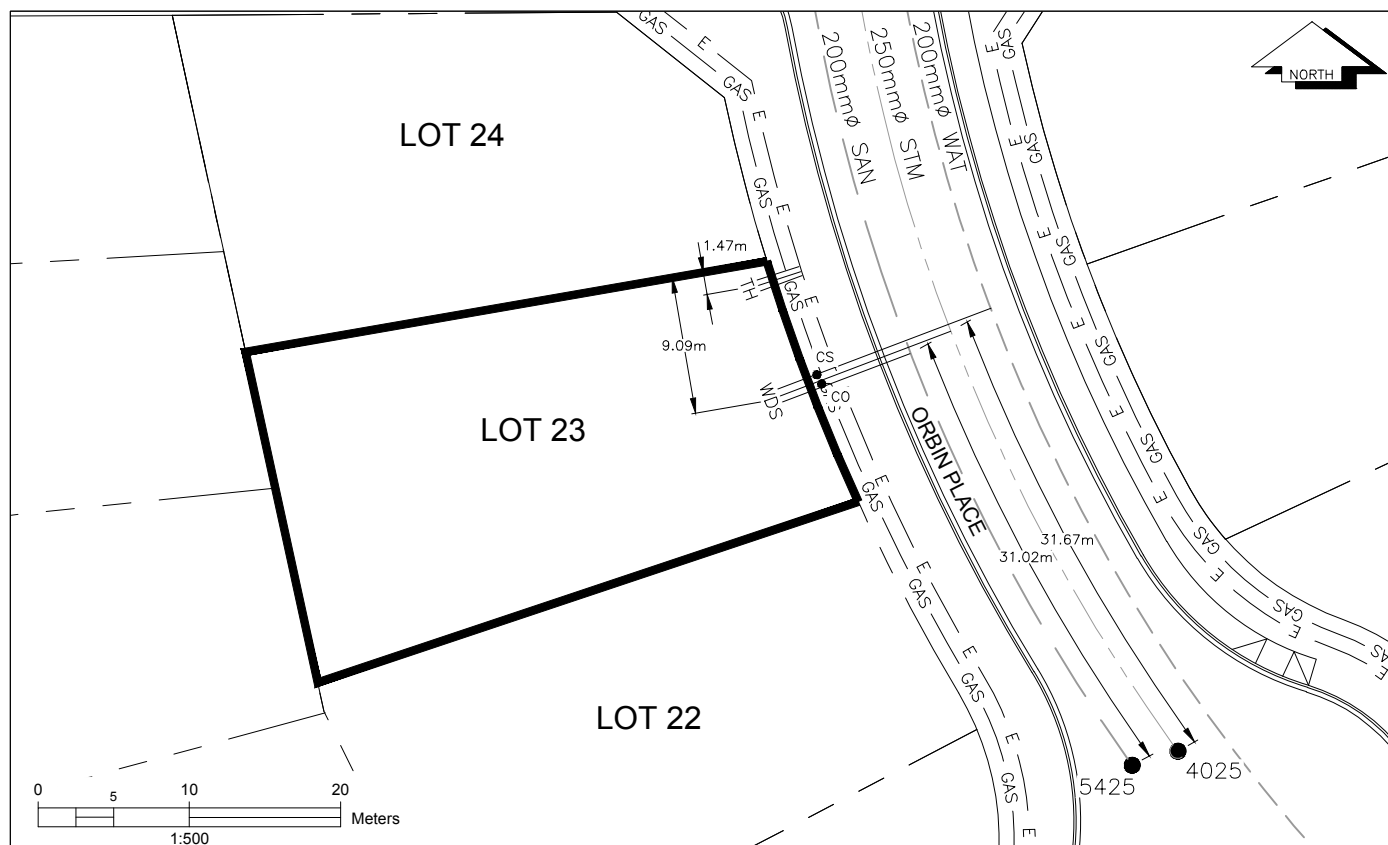
INFORMATION SHEETS: L&M ENGINEERING LIMITED PROJECT NUMBER 1515-01

SURVEY DATE: AUGUST 2015

INSTALLED BY: MIKE SIMMS

COMMENTS: SANITARY, STORM AND WATER MAIN WERE INSTALLED IN 1997

THE INFORMATION CONTAINED HEREIN IS FOR INTERNAL USE ONLY.  
NOT TO BE RELIED UPON UNLESS CONFIRMED BY SITE INVESTIGATION.



### LEGEND:

CS CURB STOP  
CO CLEAN OUT

W WATER SERVICE  
S D STORM SERVICE  
S SANITARY SERVICE

H HYDRO SERVICE  
T TELECOMMUNICATIONS

GAS GAS  
E ELECTRICAL