



CITY OF  
PRINCE GEORGE

## City of Prince George HISTORY SHEET

|        |             |
|--------|-------------|
| PID:   | 030-301-475 |
| SD/MU: | SD100461    |
| WO:    |             |

CIVIC ADDRESS: 6234 ORBIN PLACE

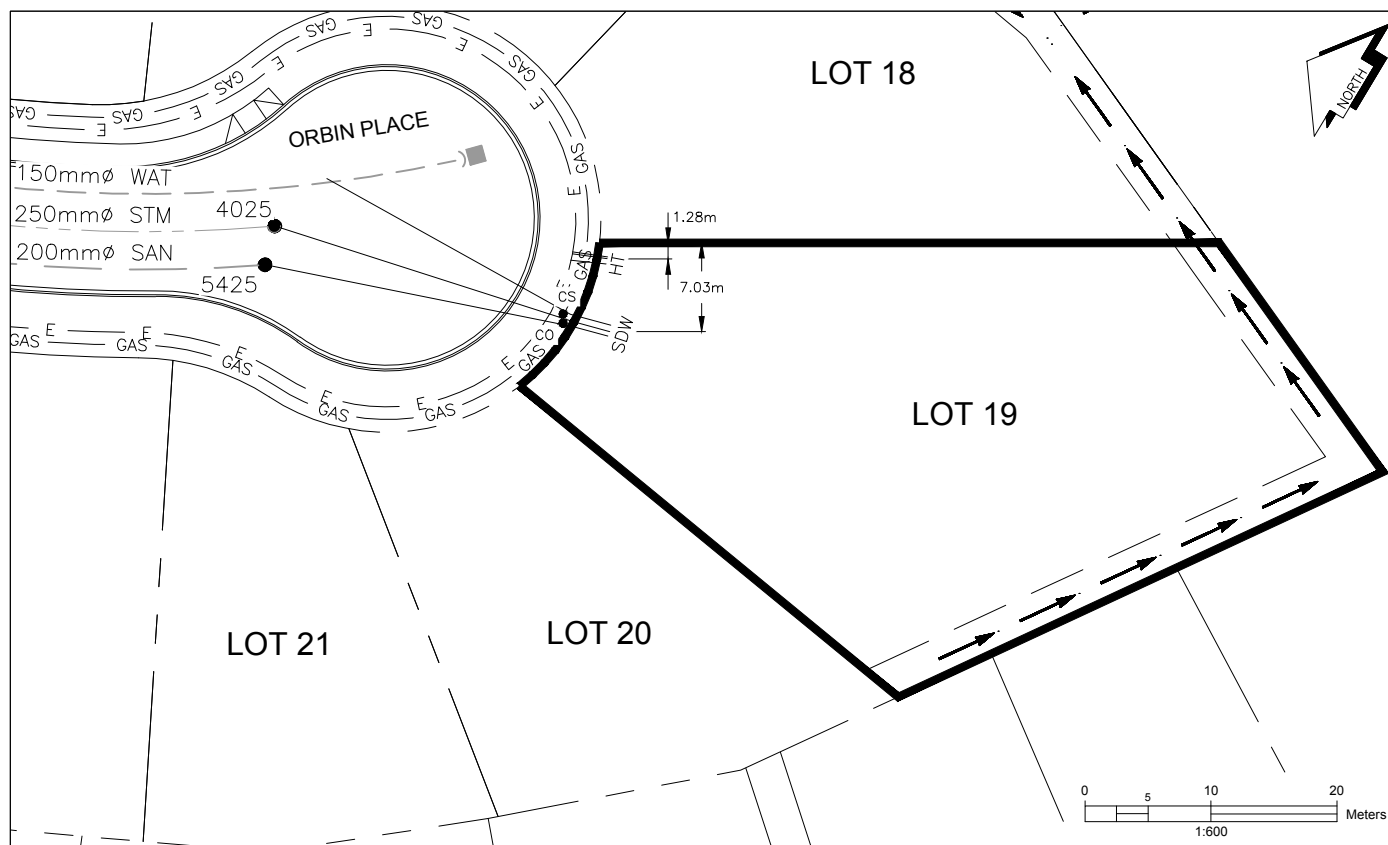
LEGAL DESCRIPTION: LOT 19 DISTRICT LOT 4028 PLAN EPP68896

| SERVICE TYPE | DIAMETER (mm) | MATERIAL | INVERT ELEV AT MAIN (m) | INVERT ELEV AT PROPERTY LINE (m) | INVERT ELEV AT SERVICE END (m) | COVER AT PROPERTY LINE (m) | DISTANCE INTO PROPERTY (m) | INSTALLATION DATE |
|--------------|---------------|----------|-------------------------|----------------------------------|--------------------------------|----------------------------|----------------------------|-------------------|
| SANITARY     | 100           | PVC      | 729.01                  | 729.77                           | 729.82                         | 2.47                       | 3.00                       | AUGUST 2015       |
| WATER        | 19            | COPPER   | 728.53                  | 729.76                           | 729.81                         | 2.48                       | 3.00                       | AUGUST 2015       |
| STORM        | 100           | PVC      | 729.26                  | 729.77                           | 729.84                         | 2.47                       | 3.00                       | AUGUST 2015       |

| ELECTRICAL / COMMUNICATIONS / GAS |          |                   |                                   |
|-----------------------------------|----------|-------------------|-----------------------------------|
| TYPE                              | PROVIDER | SIZE AND MATERIAL | LOCATION ( UNDERGROUND/ OVERHEAD) |
| ELECTRICAL                        | BC HYDRO | 75mm DB2          | UNDERGROUND                       |
| COMMUNICATION                     | TELUS    | 50mm DB2          | UNDERGROUND                       |
| COMMUNICATION                     | SHAW     | 50mm DB2          | UNDERGROUND                       |
| GAS                               | FORTISBC | 42 PROP/P.E.      | UNDERGROUND                       |

|  |                          |
|--|--------------------------|
| INFORMATION SHEETS: L&M ENGINEERING LIMITED PROJECT NUMBER 1515-01 | SURVEY DATE: AUGUST 2015 |
| INSTALLED BY: MIKE SIMMS   |                          |
| COMMENTS: SANITARY, STORM AND WATER MAIN WERE INSTALLED IN 1997    |                          |

THE INFORMATION CONTAINED HEREIN IS FOR INTERNAL USE ONLY.  
NOT TO BE RELIED UPON UNLESS CONFIRMED BY SITE INVESTIGATION.



|         |                |                     |                          |                  |
|---------|----------------|---------------------|--------------------------|------------------|
| LEGEND: | CS ● CURB STOP | — W — WATER SERVICE | — H — HYDRO SERVICE      | — GAS — GAS      |
|         | CO ● CLEAN OUT | — S — STORM SERVICE | — T — TELECOMMUNICATIONS | — E — ELECTRICAL |