



CITY OF
PRINCE GEORGE

City of Prince George HISTORY SHEET

| | |
|--------|-------------|
| PID: | 030-301-378 |
| SD/MU: | SD100461 |
| WO: | |

CIVIC ADDRESS: 6354 RITA PLACE

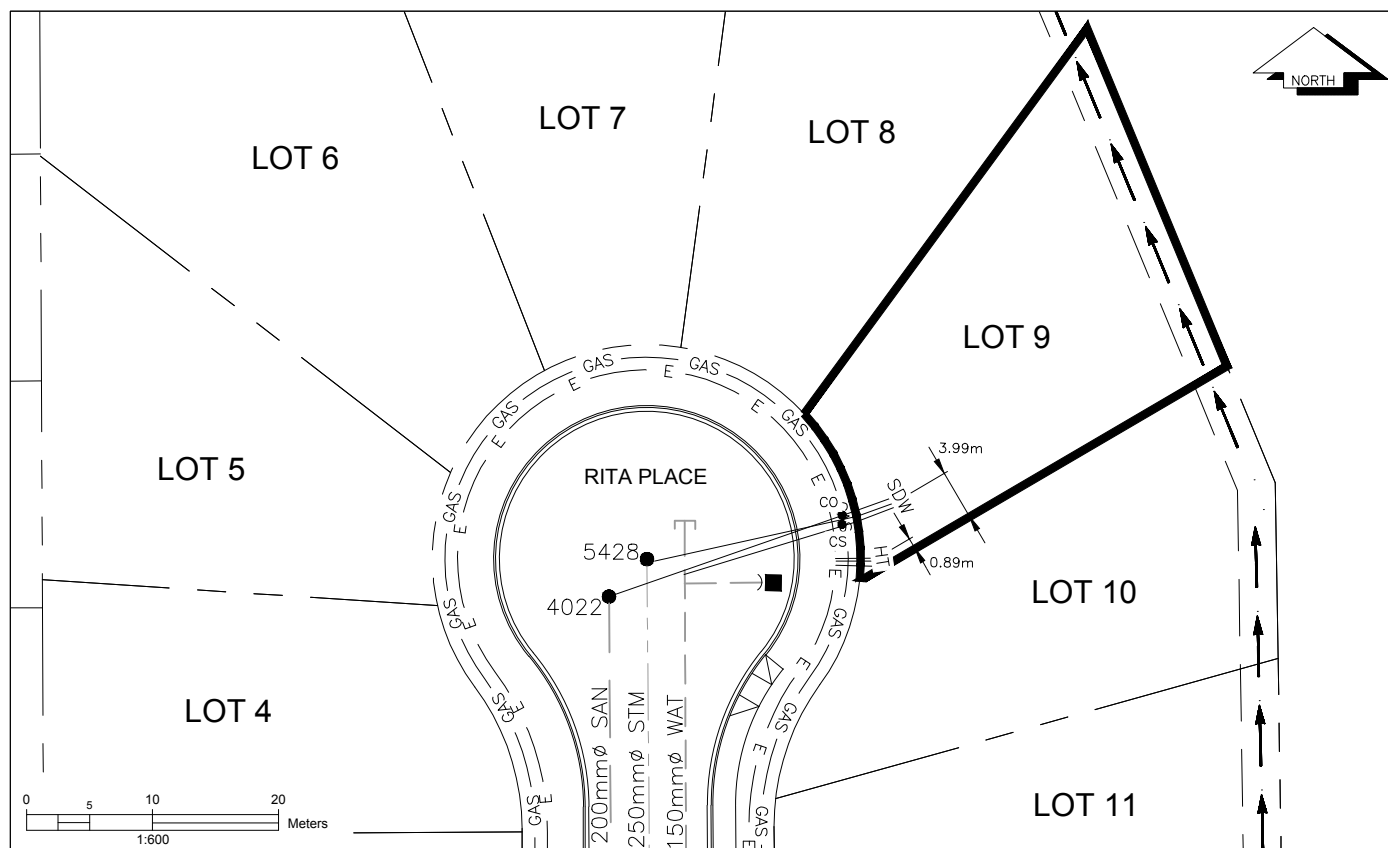
LEGAL DESCRIPTION: LOT 9 DISTRICT LOT 4028 PLAN EPP68896

| SERVICE TYPE | DIAMETER (mm) | MATERIAL | INVERT ELEV AT MAIN (m) | INVERT ELEV AT PROPERTY LINE (m) | INVERT ELEV AT SERVICE END (m) | COVER AT PROPERTY LINE (m) | DISTANCE INTO PROPERTY (m) | INSTALLATION DATE |
|--------------|---------------|----------|-------------------------|----------------------------------|--------------------------------|----------------------------|----------------------------|-------------------|
| SANITARY | 100 | PVC | 729.34 | 729.74 | 729.83 | 2.56 | 3.00 | JULY 2015 |
| WATER | 19 | COPPER | 729.51 | 729.79 | 729.87 | 2.56 | 3.00 | JULY 2015 |
| STORM | 100 | PVC | 729.28 | 729.76 | 729.83 | 2.56 | 3.00 | JULY 2015 |

| ELECTRICAL / COMMUNICATIONS / GAS | | | |
|-----------------------------------|----------|-------------------|-----------------------------------|
| TYPE | PROVIDER | SIZE AND MATERIAL | LOCATION (UNDERGROUND/ OVERHEAD) |
| ELECTRICAL | BC HYDRO | 75mm DB2 | UNDERGROUND |
| COMMUNICATION | TELUS | 50mm DB2 | UNDERGROUND |
| COMMUNICATION | SHAW | 50mm DB2 | UNDERGROUND |
| GAS | FORTISBC | 42 PROP/P.E. | UNDERGROUND |

| | |
|--|------------------------|
| INFORMATION SHEETS: L&M ENGINEERING LIMITED PROJECT NUMBER 1515-01 | SURVEY DATE: JULY 2015 |
| INSTALLED BY: MIKE SIMMS | |
| COMMENTS: SANITARY, STORM AND WATER MAIN WERE INSTALLED IN 1997 | |

THE INFORMATION CONTAINED HEREIN IS FOR INTERNAL USE ONLY.
NOT TO BE RELIED UPON UNLESS CONFIRMED BY SITE INVESTIGATION.



| LEGEND: | CS ● CURB STOP | — W — WATER SERVICE | — H — HYDRO SERVICE | — GAS — GAS |
|---------|----------------|--------------------------|--------------------------|------------------|
| | CO ● CLEAN OUT | — S D W — STORM SERVICE | — T — TELECOMMUNICATIONS | — E — ELECTRICAL |
| | | — SAN — SANITARY SERVICE | | |