



CITY OF
PRINCE GEORGE

City of Prince George HISTORY SHEET

PID:	030-301-335
SD/MU:	SD100461
WO:	

CIVIC ADDRESS: 6355 RITA PLACE

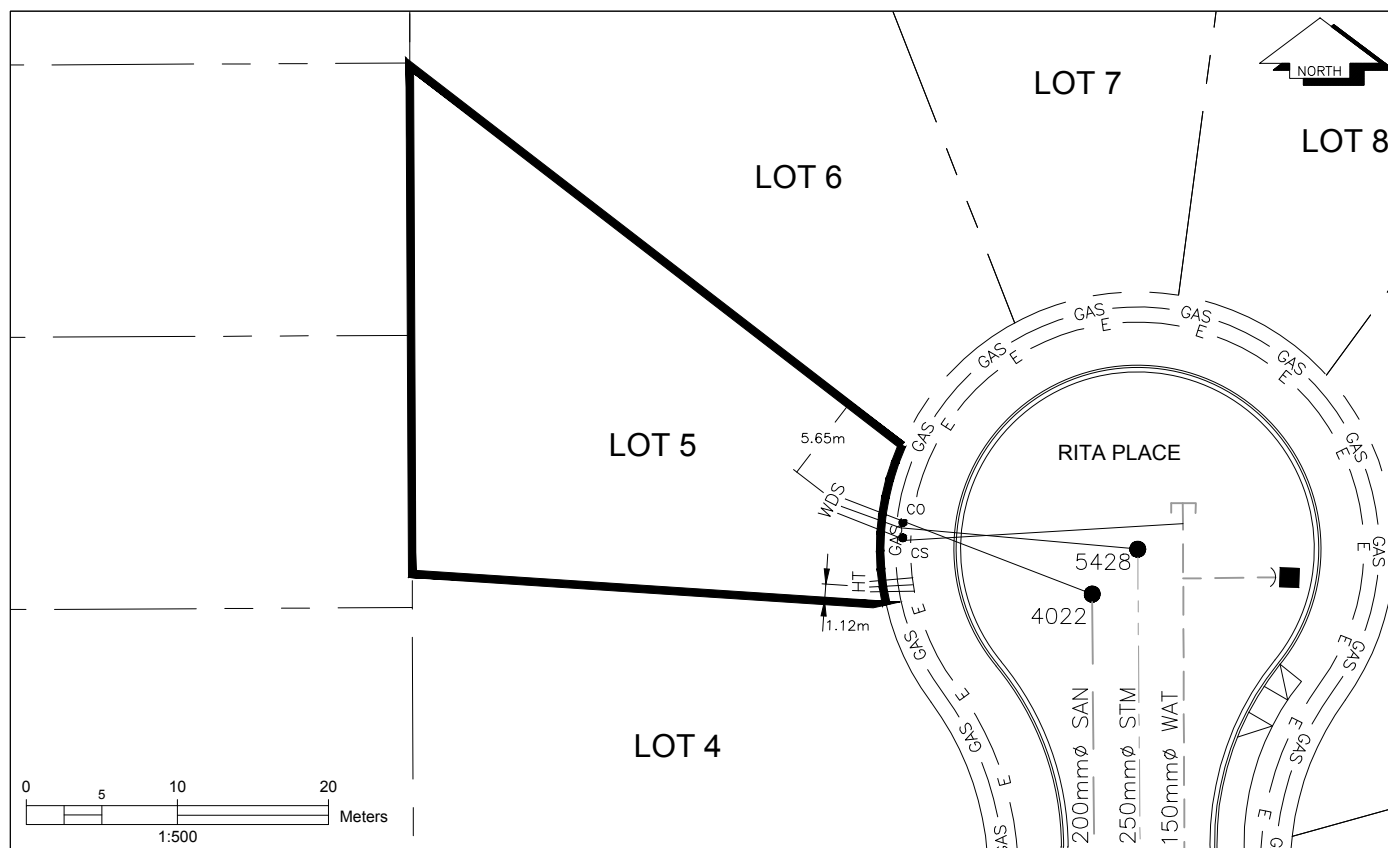
LEGAL DESCRIPTION: LOT 5 DISTRICT LOT 4028 PLAN EPP68896

SERVICE TYPE	DIAMETER (mm)	MATERIAL	INVERT ELEV AT MAIN (m)	INVERT ELEV AT PROPERTY LINE (m)	INVERT ELEV AT SERVICE END (m)	COVER AT PROPERTY LINE (m)	DISTANCE INTO PROPERTY (m)	INSTALLATION DATE
SANITARY	100	PVC	728.02	729.77	729.87	2.48	3.00	JULY 2015
WATER	19	COPPER	729.30	729.67	729.76	2.50	3.00	JULY 2015
STORM	100	PVC	729.27	729.76	729.86	2.50	3.00	JULY 2015

ELECTRICAL / COMMUNICATIONS / GAS			
TYPE	PROVIDER	SIZE AND MATERIAL	LOCATION (UNDERGROUND/ OVERHEAD)
ELECTRICAL	BC HYDRO	75mm DB2	UNDERGROUND
COMMUNICATION	TELUS	50mm DB2	UNDERGROUND
COMMUNICATION	SHAW	50mm DB2	UNDERGROUND
GAS	FORTISBC	42 PROP/P.E.	UNDERGROUND

INFORMATION SHEETS: L&M ENGINEERING LIMITED PROJECT NUMBER 1515-01	SURVEY DATE: JULY 2015
INSTALLED BY: MIKE SIMMS	
COMMENTS: SANITARY, STORM AND WATER MAIN WERE INSTALLED IN 1997	

THE INFORMATION CONTAINED HEREIN IS FOR INTERNAL USE ONLY.
NOT TO BE RELIED UPON UNLESS CONFIRMED BY SITE INVESTIGATION.



LEGEND:			
CS ● CURB STOP	— W — WATER SERVICE	— H — HYDRO SERVICE	— GAS — GAS
CO ● CLEAN OUT	— S — STORM SERVICE	— T — TELECOMMUNICATIONS	— E — ELECTRICAL
	— SAN — SANITARY SERVICE		