



CITY OF  
PRINCE GEORGE

## City of Prince George HISTORY SHEET

|        |             |
|--------|-------------|
| PID:   | 030-301-327 |
| SD/MU: | SD100461    |
| WO:    |             |

CIVIC ADDRESS: 6343 RITA PLACE

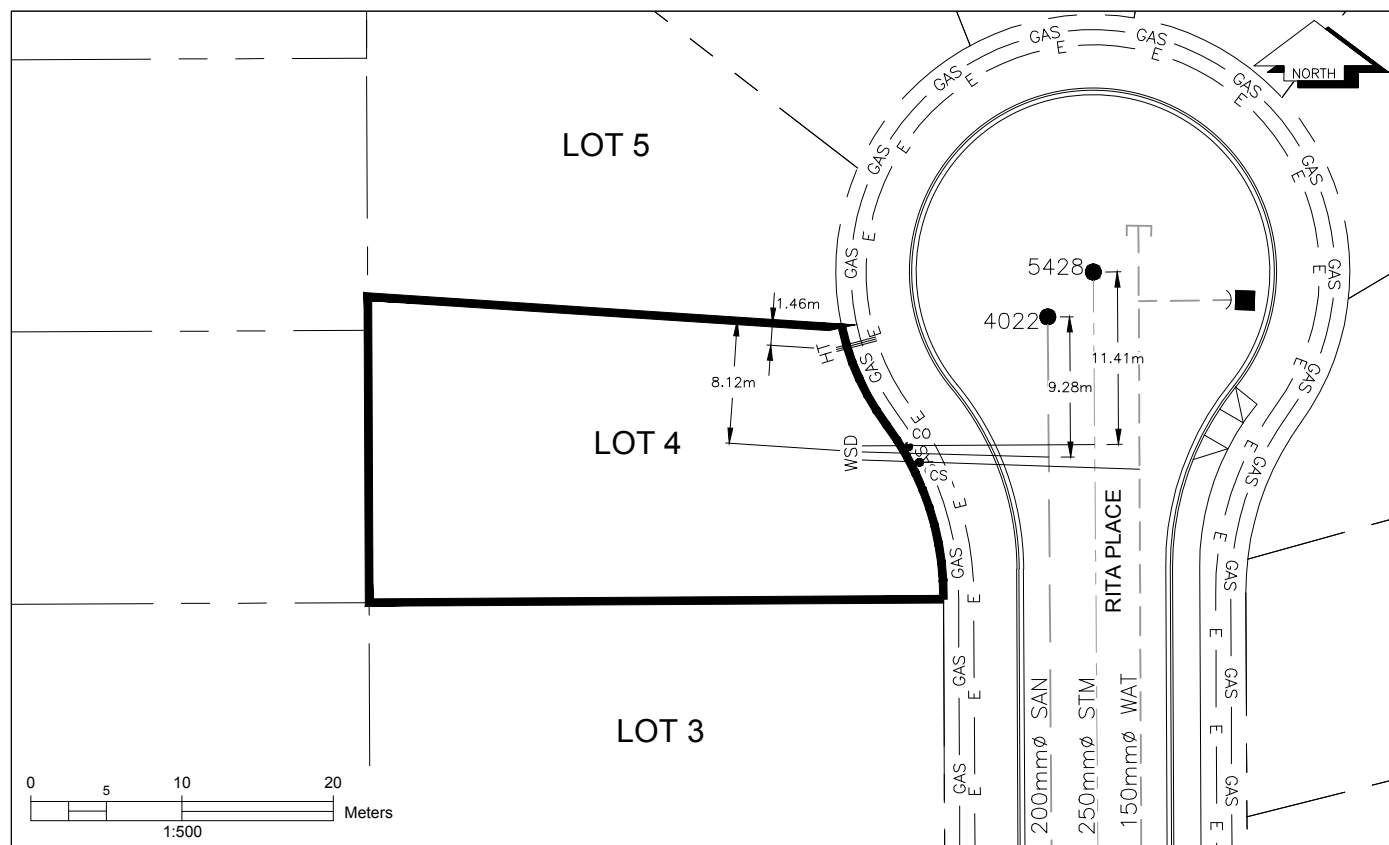
LEGAL DESCRIPTION: LOT 4 DISTRICT LOT 4028 PLAN EPP68896

| SERVICE TYPE | DIAMETER (mm) | MATERIAL | INVERT ELEV AT MAIN (m) | INVERT ELEV AT PROPERTY LINE (m) | INVERT ELEV AT SERVICE END (m) | COVER AT PROPERTY LINE (m) | DISTANCE INTO PROPERTY (m) | INSTALLATION DATE |
|--------------|---------------|----------|-------------------------|----------------------------------|--------------------------------|----------------------------|----------------------------|-------------------|
| SANITARY     | 100           | PVC      | 729.36                  | 729.60                           | 729.65                         | 2.55                       | 3.00                       | JULY 2015         |
| WATER        | 19            | COPPER   | 729.31                  | 729.43                           | 729.49                         | 2.80                       | 3.00                       | JULY 2015         |
| STORM        | 100           | PVC      | 729.50                  | 729.58                           | 729.66                         | 2.57                       | 3.00                       | JULY 2015         |

| ELECTRICAL / COMMUNICATIONS / GAS |          |                   |                                   |
|-----------------------------------|----------|-------------------|-----------------------------------|
| TYPE                              | PROVIDER | SIZE AND MATERIAL | LOCATION ( UNDERGROUND/ OVERHEAD) |
| ELECTRICAL                        | BC HYDRO | 75mm DB2          | UNDERGROUND                       |
| COMMUNICATION                     | TELUS    | 50mm DB2          | UNDERGROUND                       |
| COMMUNICATION                     | SHAW     | 50mm DB2          | UNDERGROUND                       |
| GAS                               | FORTISBC | 42 PROP/P.E.      | UNDERGROUND                       |

|  |                        |
|--|------------------------|
| INFORMATION SHEETS: L&M ENGINEERING LIMITED PROJECT NUMBER 1515-01 | SURVEY DATE: JULY 2015 |
| INSTALLED BY: MIKE SIMMS   |                        |
| COMMENTS: SANITARY, STORM AND WATER MAIN WERE INSTALLED IN 1997    |                        |

THE INFORMATION CONTAINED HEREIN IS FOR INTERNAL USE ONLY.  
NOT TO BE RELIED UPON UNLESS CONFIRMED BY SITE INVESTIGATION.



|                |                |                        |                          |                  |
|----------------|----------------|------------------------|--------------------------|------------------|
| <b>LEGEND:</b> | CS ● CURB STOP | — W — WATER SERVICE    | — H — HYDRO SERVICE      | — GAS — GAS      |
|                | CO ● CLEAN OUT | — S — STORM SERVICE    | — T — TELECOMMUNICATIONS | — E — ELECTRICAL |
|                |                | — D — SANITARY SERVICE |                          |                  |