

City of Prince George

HISTORY SHEET

PID: 030-094-518

Scale: 1:2000

Legal: LOT 1

D.L.: 4039

PLAN: EPP56988

Address: 5567 HARTWAY DRIVE

Sanitary Connection:#	SIZE: 150mmØ	MATERIAL: PVC	INV. 694.25m	CONNECTED
-----------------------	--------------	---------------	--------------	-----------

Water Connection:#	SIZE: 150mmØ	MATERIAL: PVC	INV. 693.38m	CONNECTED
--------------------	--------------	---------------	--------------	-----------

Storm Connection:#	SIZE 250mmØ	MATERIAL PVC	INV. 693.73m	CONNECTED
--------------------	-------------	--------------	--------------	-----------

Cash Receipt No's:	WATER	SANITARY	STORM
--------------------	-------	----------	-------

CURB FROM PROPERTY LINE	5m	PAVEMENT WIDTH	10m
-------------------------	----	----------------	-----

HYDRO	75mm DB2	U/G CONNECTION	✓
-------	----------	----------------	---

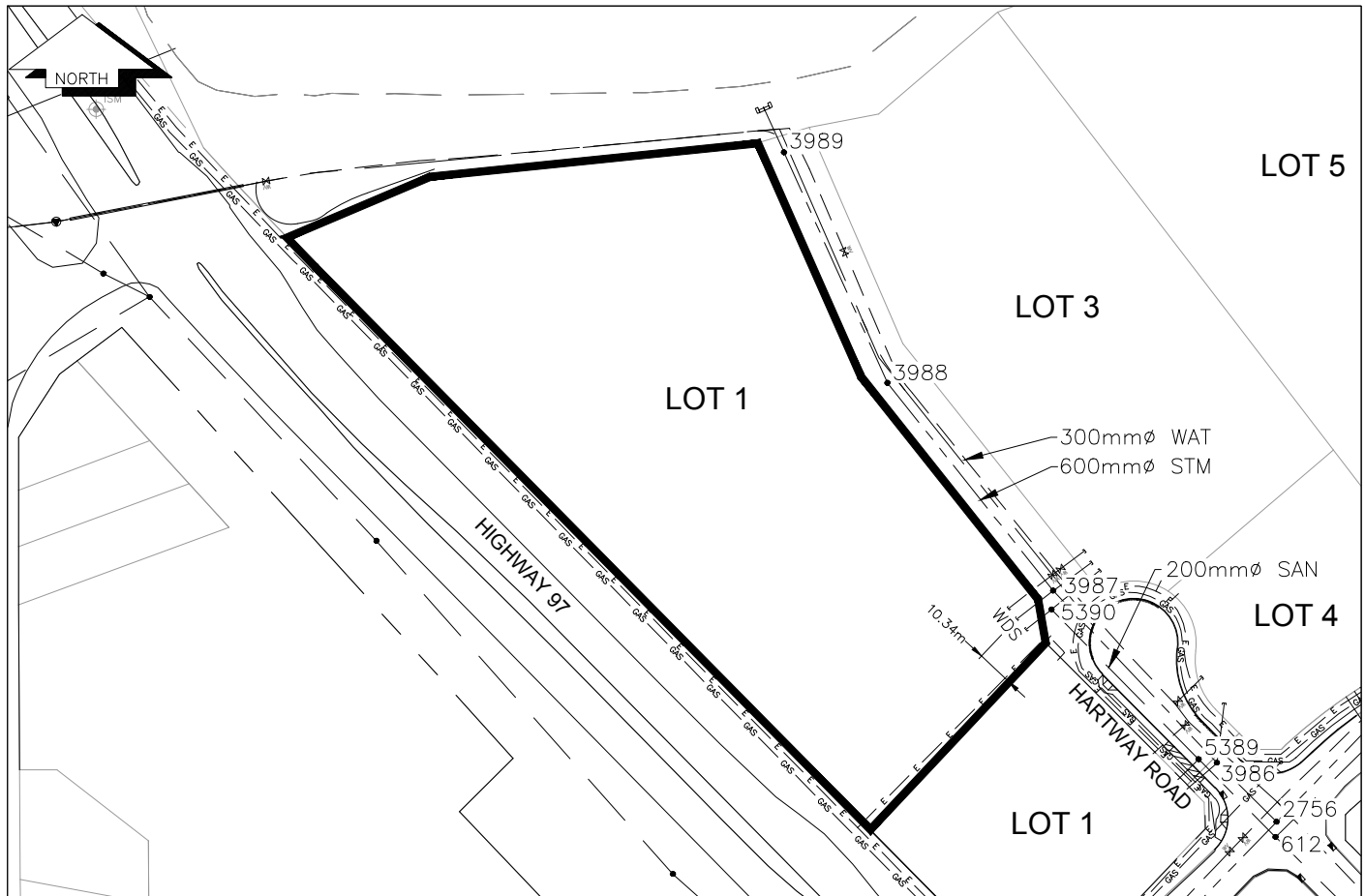
TELEPHONE	100mm DB2	U/G CONNECTION	✓
-----------	-----------	----------------	---

GAS	42 PROP/P.E.		
-----	--------------	--	--

Information Sheets: REF. DWGS. L&M ENGINEERING LTD. JOB 1146-09 DWGS

Comments:	SDW WATER SERVICE	CH HYDRO SERVICE	— GAS — GAS
	STORM SERVICE	CABLE SERVICE	— E — ELECTRICAL
	SANITARY SERVICE	TELECOMMUNICATIONS	

THE INFORMATION CONTAINED HEREIN IS FOR INTERNAL USE ONLY.
NOT TO BE RELIED UPON UNLESS CONFIRMED BY THE SITE INSPECTION AND/OR INVESTIGATION



SANITARY, STORM & WATER SERVICE INVERTS	SANITARY	WATER	STORM
1. Distance from San. M.H. <u>5390</u> toward San. M.H. <u>5389</u> to lot service connection point is:	0m	N/A	N/A
1a.Distance from Stm. M.H. <u>3987</u> toward Stm. M.H. <u>3986</u> to lot service connection point is:	N/A	N/A	0m
2. Main Size at connection point is	200mmØ	300mmØ	600mmØ
3. Invert of main at conn. stub point is	694.17m	692.60m	693.62m
4. Invert at service end is	694.40m	694.13m	693.89m
5. Cover at property line in meters	2.06m	2.80m	2.58m
6. Survey Date:OCT 2015 Book Ref.:1146-09 By:L&M ENGINEERING LTD			

SANITARY HISTORY:

DATE INSTALLED: JULY 2015

INSTALLED BY: JOE ROBERTS CONSTRUCTION

WATER HISTORY:

DATE INSTALLED: JULY 2015

INSTALLED BY: JOE ROBERTS CONSTRUCTION

STORM HISTORY:

DATE INSTALLED: JULY 2015

INSTALLED BY: JOE ROBERTS CONSTRUCTION