



CITY OF
PRINCE GEORGE

City of Prince George HISTORY SHEET

| | |
|--------|-------------|
| PID: | 029-974-828 |
| SD/MU: | SD100508 |
| WO: | |

CIVIC ADDRESS: 3959 BRINK DRIVE

LEGAL DESCRIPTION: LOT 9 DISTRICT LOT 4376 PLAN EPP63574

| SERVICE TYPE | DIAMETER (mm) | MATERIAL | INVERT ELEV AT MAIN (m) | INVERT ELEV AT PROPERTY LINE (m) | INVERT ELEV AT SERVICE END (m) | COVER AT PROPERTY LINE (m) | DISTANCE INTO PROPERTY (m) | INSTALLATION DATE |
|--------------|---------------|----------|-------------------------|----------------------------------|--------------------------------|----------------------------|----------------------------|-------------------|
| SANITARY | 100 | PVC | 596.87 | 597.10 | 597.15 | 3.03 | 3.00 | MAY 2016 |
| WATER | 19 | COPPER | 596.92 | 597.12 | 597.20 | 3.09 | 3.00 | MAY 2016 |
| STORM | N/A | N/A | N/A | N/A | N/A | N/A | N/A | N/A |

ELECTRICAL / COMMUNICATIONS / GAS

| TYPE | PROVIDER | SIZE AND MATERIAL | LOCATION (UNDERGROUND/ OVERHEAD) |
|---------------|----------|-------------------|-----------------------------------|
| ELECTRICAL | BC HYDRO | 75mm DB2 | UNDERGROUND |
| COMMUNICATION | TELUS | 50mm DB2 | UNDERGROUND |
| COMMUNICATION | SHAW | 50mm DB2 | UNDERGROUND |
| GAS | FORTISBC | 42 PROP/P.E. | UNDERGROUND |

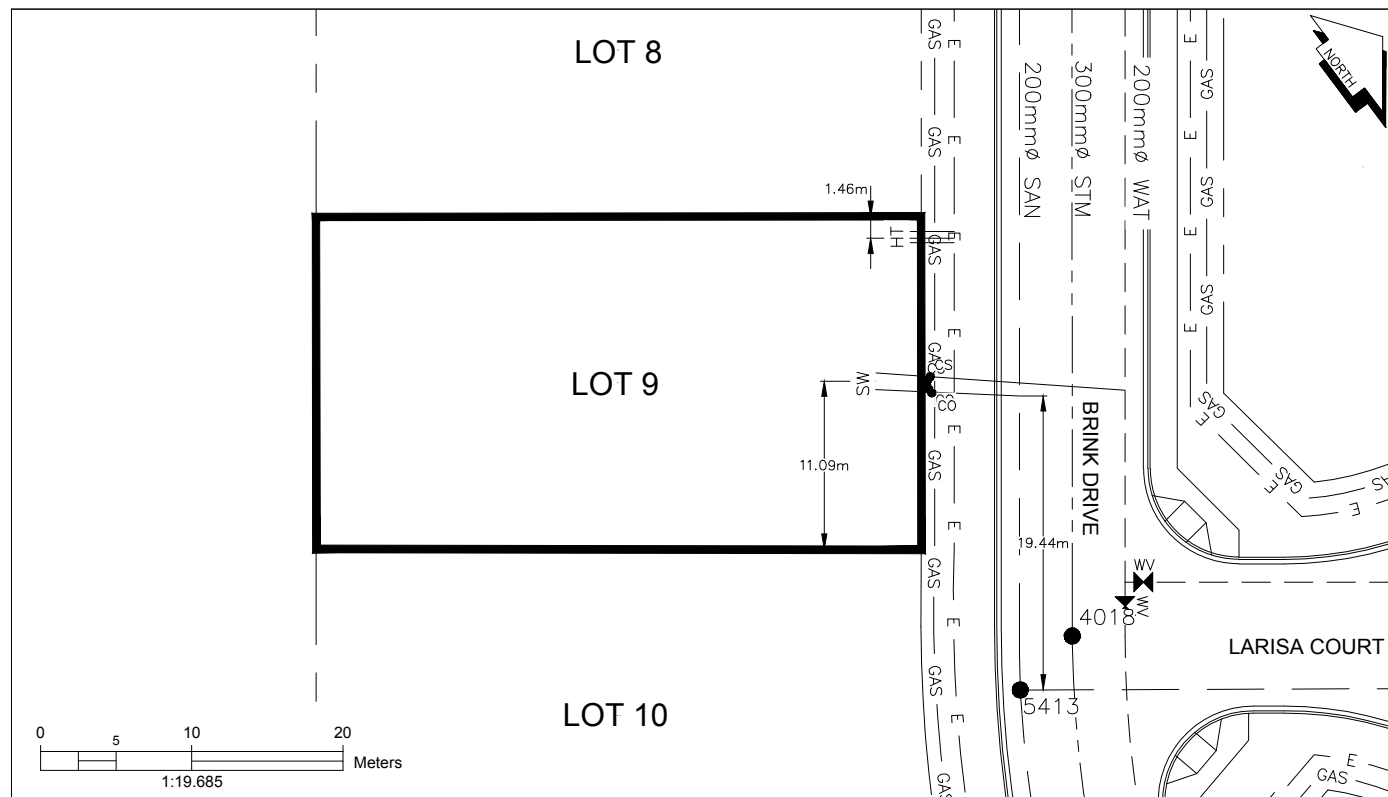
INFORMATION SHEETS: L&M ENGINEERING LIMITED PROJECT NUMBER 1145-20

SURVEY DATE: JUNE 2016

INSTALLED BY: JR CONSTRUCTION & CONSULTING SERVICES LTD.

COMMENTS:

THE INFORMATION CONTAINED HEREIN IS FOR INTERNAL USE ONLY.
NOT TO BE RELIED UPON UNLESS CONFIRMED BY SITE INVESTIGATION.



LEGEND:

CS CURB STOP
CO CLEAN OUT

W WATER SERVICE
S STORM SERVICE
SANITARY SERVICE

HYDRO SERVICE
TELECOMMUNICATIONS

GAS GAS
E ELECTRICAL