

City of Prince George

HISTORY SHEET

PID: 029-917-832

Scale: 1:500

Legal: LOT 24

D.L.: 2014

PLAN: EPP53901

Address: 6916 SUNRISE PLACE

Sanitary Connection:# SIZE: 100mmØ MATERIAL: PVC INV. AT \mathbb{R} 583.37m CONNECTED

Water Connection:# SIZE: 19mmØ MATERIAL: COPPER INV. AT \mathbb{R} 583.16m CONNECTED

Storm Connection:# SIZE: 100mmØ MATERIAL: PVC INV. AT \mathbb{R} 583.47m CONNECTED

Cash Receipt No's: WATER SANITARY STORM

CURB FROM PROPERTY LINE 5m PAVEMENT WIDTH 10m

HYDRO 75mm DB2 U/G CONNECTION ✓

TELEPHONE 100mm DB2 U/G CONNECTION ✓

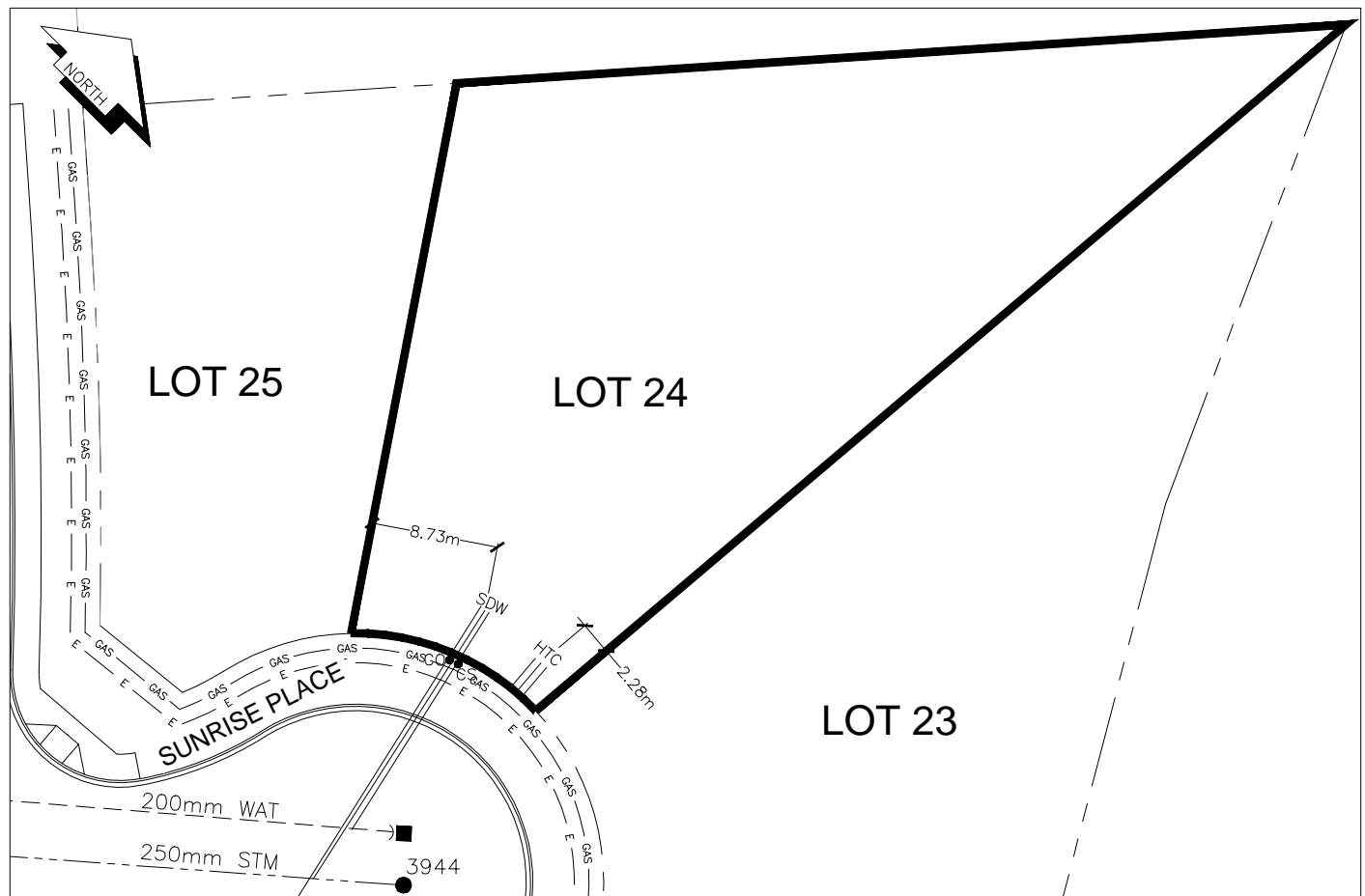
GAS 42 PROP/P.E.

Information Sheets: REF. DWGS. L&M ENGINEERING LTD. JOB. 1282-11 DWGS.

Comments: CS CURB STOP CO CLEAN OUT SDW WATER SERVICE STORM SERVICE SANITARY SERVICE HTC HYDRO SERVICE CABLE SERVICE TELECOMMUNICATIONS GAS ELECTRICAL

THE INFORMATION CONTAINED HEREIN IS FOR INTERNAL USE ONLY.

NOT TO BE RELIED UPON UNLESS CONFIRMED BY THE SITE INSPECTION AND/OR INVESTIGATION



SANITARY, STORM & WATER SERVICE INVERTS	SANITARY	WATER	STORM
1. Distance from San. M.H. <u>5364</u> toward San. M.H. <u>5365</u> to lot service connection point is:	4.76m	N/A	N/A
1a.Distance from Stm. M.H. <u>3944</u> toward Stm. M.H. <u>3945</u> to lot service connection point is:	N/A	N/A	6.12m
2. Main Size at connection point is	200mmØ	200mmØ	250mmØ
3. Invert of service at main conn. stub point is	582.79m	582.28m	582.65m
4. Invert at service end is	583.47m	000.00m	583.47m
5. Cover at property line in meters	2.14m	2.43m	2.13m
6. Survey Date:AUG 2015 Book Ref.:1140-13 By:FORTWOOD HOMES LTD.			

SANITARY HISTORY:

DATE INSTALLED: AUG 2015

INSTALLED BY: FORTWOOD HOMES LTD.

WATER HISTORY:

DATE INSTALLED: AUG 2015

INSTALLED BY: FORTWOOD HOMES LTD.

STORM HISTORY:

DATE INSTALLED: AUG 2015

INSTALLED BY: FORTWOOD HOMES LTD.