

# City of Prince George

## HISTORY SHEET

PID: 029-723-744



Scale: 1:500

Legal: LOT 50

D.L.: 2425

PLAN: EPP55596

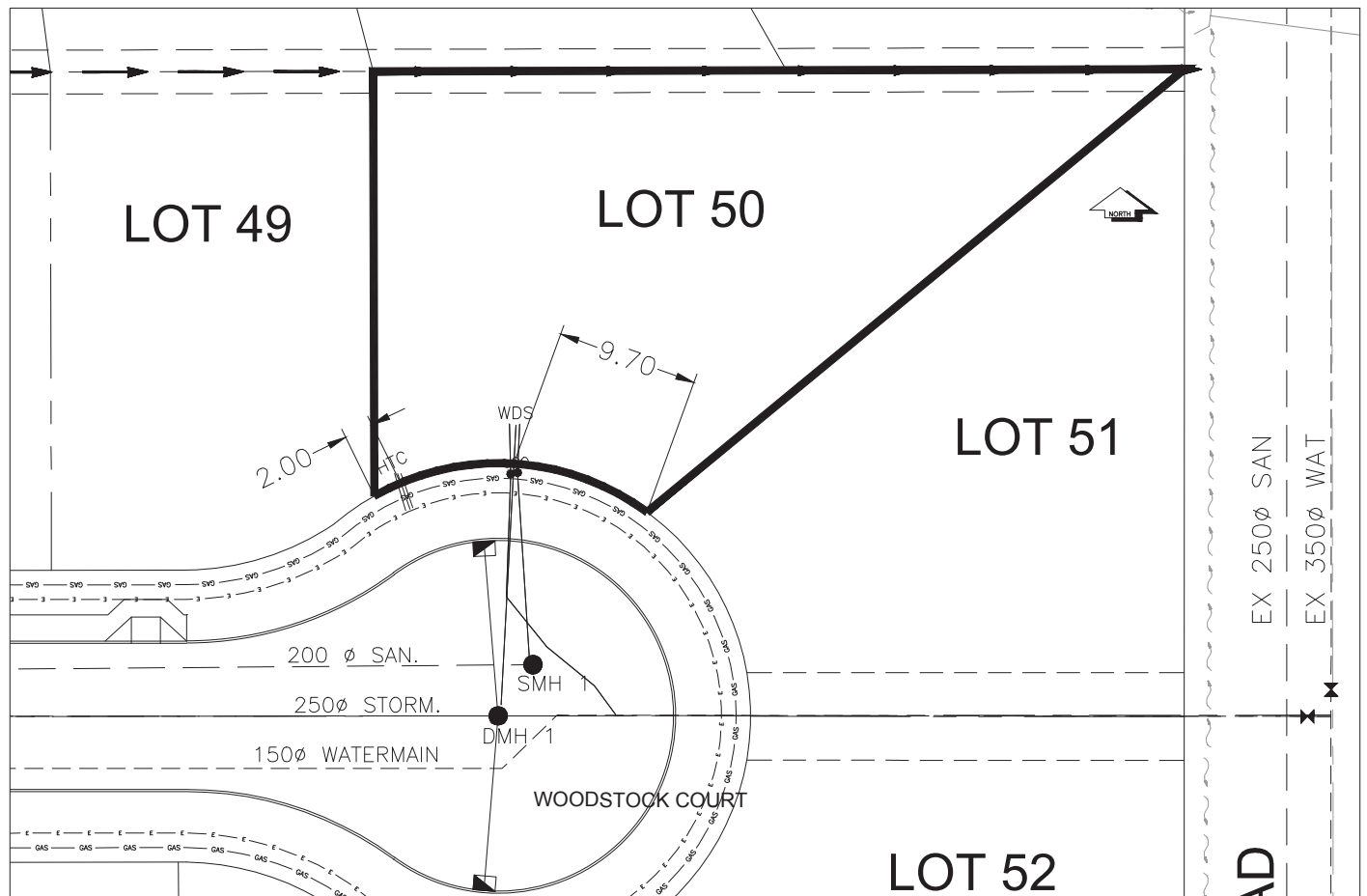
Address: 5200 WOODSTOCK COURT

Sanitary Connection:#	SIZE:	100mmØ	MATERIAL:	PVC	INV. @ PL	762.04m	CONNECTED
Water Connection:#	SIZE:	19mmØ	MATERIAL:	COPPER	INV. @ PL	761.96m	CONNECTED
Storm Connection:#	SIZE	100mmØ	MATERIAL	PVC	INV. @ PL	762.12m	CONNECTED
Cash Receipt No's:	WATER		SANITARY		STORM		
CURB FROM PROPERTY LINE	5m					PAVEMENT WIDTH	10m
HYDRO	75mm DB2	U/G CONNECTION					
TELEPHONE	50mm DB2	U/G CONNECTION					
GAS	42 PROP /P.E						

Information Sheets: REF DWGS L&M ENGINEERING LTD. JOB 1107-09-04 DWGS (001-302)

Comments: CS CURB STOP CO CLEAN OUT WDS WATER SERVICE SOW STORM SERVICE SANITARY SERVICE HYDRO SERVICE CABLE SERVICE TELECOMMUNICATIONS GAS GAS ELECTRICAL

THE INFORMATION CONTAINED HEREIN IS FOR INTERNAL USE ONLY.  
NOT TO BE RELIED UPON UNLESS CONFIRMED BY THE SITE INSPECTION AND/OR INVESTIGATION



SANITARY, STORM & WATER SERVICE INVERTS	SANITARY	WATER	STORM
1. Distance from San. M.H. <u>SMH1</u> toward San. M.H. <u>689601</u> to lot service connection point is:	0m	N/A	N/A
1a.Distance from Stm. M.H. <u>DMH1</u> toward Stm. M.H. <u>689601</u> to lot service connection point is:	N/A	N/A	0m
2. Main Size at connection point is	200mmØ	150mmØ	250mmØ
3. Invert of main at conn. stub point is	761.17m	760.43m	761.59m
4. Invert at service end is	762.20m	762.04m	762.18m
5. Cover at property line in meters	2.21m	2.37m	2.13m
6. Survey Date:JULY 2008 Book Ref.:1107-09-03 By:FORESIGHT			

### SANITARY HISTORY:

DATE MAIN INSTALLED: JULY 2008

DATE SERVICES EXTENDED: JULY 2008

INSTALLED BY: WESTERN INDUSTRIAL CONTRACTORS LTD.

### WATER HISTORY:

DATE MAIN INSTALLED: JULY 2008

DATE SERVICES EXTENDED: JULY 2008

INSTALLED BY: WESTERN INDUSTRIAL CONTRACTORS LTD.

### STORM HISTORY:

DATE MAIN INSTALLED: JULY 2008

DATE SERVICES EXTENDED: JULY 2008

INSTALLED BY: WESTERN INDUSTRIAL CONTRACTORS LTD.