

# City of Prince George

## HISTORY SHEET

PID: **029-723-698**

Scale: 1:500

Legal: LOT 57

D.L.: 2425

PLAN: EPP55596

Address: **5283 WOODSTOCK COURT**

Sanitary Connection:#	SIZE:	100mmØ	MATERIAL:	PVC	INV. @ PL	761.87m	CONNECTED
-----------------------	-------	--------	-----------	-----	-----------	---------	-----------

Water Connection:#	SIZE:	19mmØ	MATERIAL:	COPPER	INV. @ PL	761.60m	CONNECTED
--------------------	-------	-------	-----------	--------	-----------	---------	-----------

Storm Connection:#	SIZE	100mmØ	MATERIAL	PVC	INV. @ PL	761.80m	CONNECTED
--------------------	------	--------	----------	-----	-----------	---------	-----------

Cash Receipt No's:	WATER	SANITARY	STORM
--------------------	-------	----------	-------

CURB FROM PROPERTY LINE	5m	PAVEMENT WIDTH	10m
-------------------------	----	----------------	-----

HYDRO	75mm DB2	U/G CONNECTION	✓
-------	----------	----------------	---

TELEPHONE	50mm DB2	U/G CONNECTION	✓
-----------	----------	----------------	---

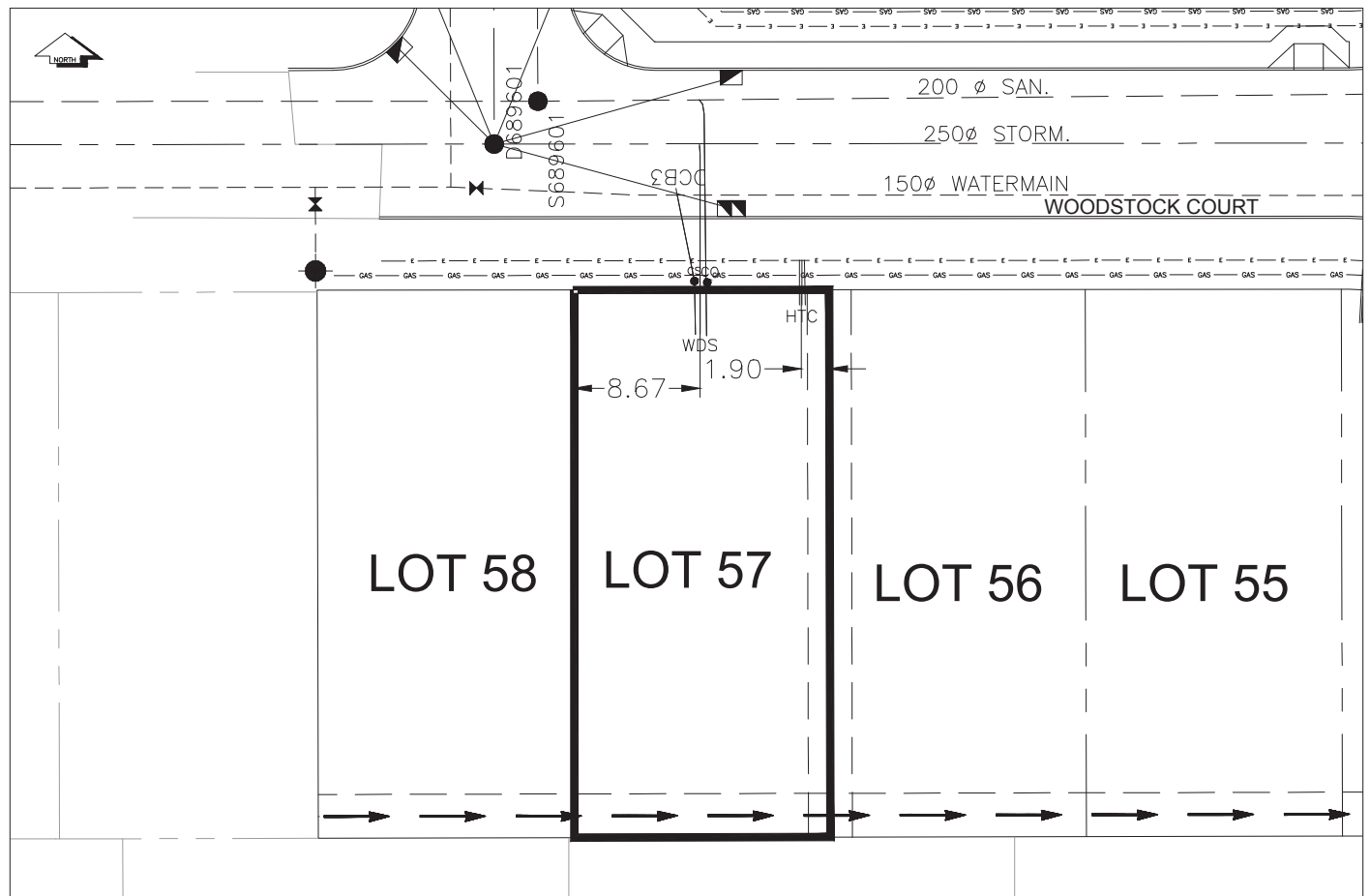
GAS	42 PROP /P.E
-----	--------------

Information Sheets: REF DWGS L&M ENGINEERING LTD. JOB 1107-09-04 DWGS (001-302)

Comments: CS CURB STOP      SOW WATER SERVICE  
CO CLEAN OUT      SOW STORM SERVICE  
   SOW SANITARY SERVICE

HYDRO SERVICE      GAS  
CABLE SERVICE      ELECTRICAL  
TELECOMMUNICATIONS

**THE INFORMATION CONTAINED HEREIN IS FOR INTERNAL USE ONLY.  
NOT TO BE RELIED UPON UNLESS CONFIRMED BY THE SITE INSPECTION AND/OR INVESTIGATION**



SANITARY, STORM & WATER SERVICE INVERTS	SANITARY	WATER	STORM
1. Distance from San. M.H. <u>SMH1</u> toward San. M.H. <u>689601</u> to lot service connection point is:	68.18m	N/A	N/A
1a.Distance from Stm. M.H. <u>DMH1</u> toward Stm. M.H. <u>689601</u> to lot service connection point is:	N/A	N/A	65.76m
2. Main Size at connection point is	200mmØ	150mmØ	250mmØ
3. Invert of main at conn. stub point is	760.67m	760.92m	761.33m
4. Invert at service end is	761.91m	761.84m	761.88m
5. Cover at property line in meters	2.26m	2.58m	2.30m
6. Survey Date:JULY 2008 Book Ref.:1107-09-03 By:FORESIGHT			

### SANITARY HISTORY:

DATE MAIN INSTALLED: JULY 2008

DATE SERVICES EXTENDED: JULY 2008

INSTALLED BY: WESTERN INDUSTRIAL CONTRACTORS LTD.

### WATER HISTORY:

DATE MAIN INSTALLED: JULY 2008

DATE SERVICES EXTENDED: JULY 2008

INSTALLED BY: WESTERN INDUSTRIAL CONTRACTORS LTD.

### STORM HISTORY:

DATE MAIN INSTALLED: JULY 2008

DATE SERVICES EXTENDED: JULY 2008

INSTALLED BY: WESTERN INDUSTRIAL CONTRACTORS LTD.