

City of Prince George

HISTORY SHEET

PID: **029-723-671**

Scale: 1:500

Legal: LOT 47

D.L.: 2425

PLAN: EPP55596

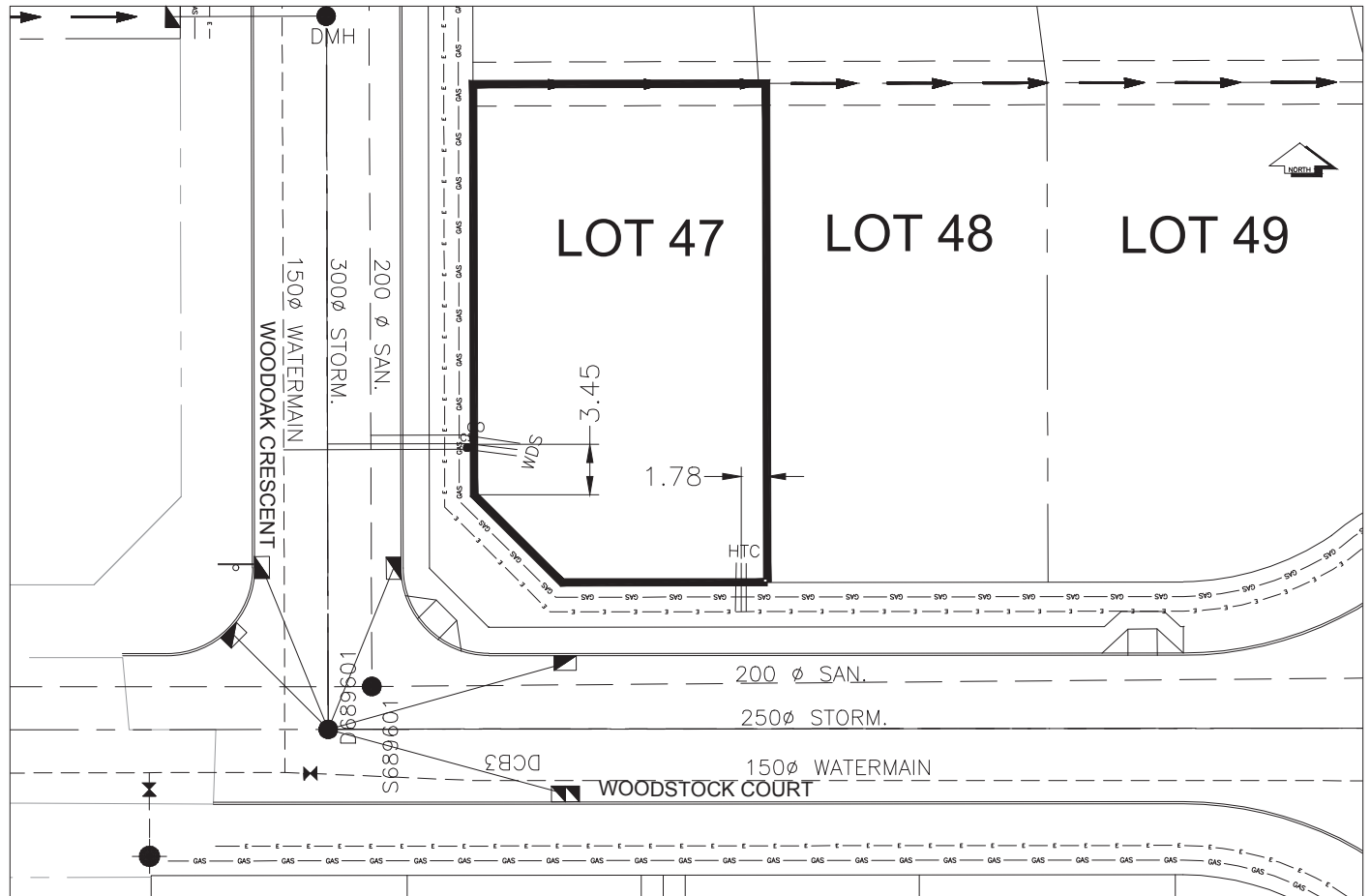
Address: **5282 WOODSTOCK COURT**

Sanitary Connection:#	SIZE: 100mmØ	MATERIAL: PVC	INV. @ PL	761.80m	CONNECTED
Water Connection:#	SIZE: 19mmØ	MATERIAL: COPPER	INV. @ PL	761.85m	CONNECTED
Storm Connection:#	SIZE: 100mmØ	MATERIAL: PVC	INV. @ PL	761.79m	CONNECTED
Cash Receipt No's:	WATER		SANITARY		STORM
CURB FROM PROPERTY LINE	5m		PAVEMENT WIDTH	10m	
HYDRO	75mm DB2		U/G CONNECTION	✓	
TELEPHONE	50mm DB2		U/G CONNECTION	✓	
GAS	42 PROP /P.E				

Information Sheets: REF DWGS L&M ENGINEERING LTD. JOB 1107-09-04 DWGS (001-302)

Comments: CS CURB STOP SDW WATER SERVICE TOH HYDRO SERVICE
CO CLEAN OUT STORM SERVICE CABLE SERVICE
SANITARY SERVICE TELECOMMUNICATIONS GAS GAS
ELECTRICAL

**THE INFORMATION CONTAINED HEREIN IS FOR INTERNAL USE ONLY.
NOT TO BE RELIED UPON UNLESS CONFIRMED BY THE SITE INSPECTION AND/OR INVESTIGATION**



SANITARY, STORM & WATER SERVICE INVERTS	SANITARY	WATER	STORM
1. Distance from San. M.H. <u>689601</u> toward San. M.H. <u>689504</u> to lot service connection point is:	17.16m	N/A	N/A
1a.Distance from Stm. M.H. <u>689601</u> toward Stm. M.H. <u> </u> - <u> </u> to lot service connection point is:	N/A	N/A	19.50m
2. Main Size at connection point is	200mmØ	150mmØ	300mmØ
3. Invert of main at conn. stub point is	760.13m	761.69m	760.66m
4. Invert at service end is	761.96m	761.86m	761.97m
5. Cover at property line in meters	2.33m	2.36m	2.34m
6. Survey Date:JULY 2008 Book Ref.:1107-09-03 By:FORESIGHT			

SANITARY HISTORY:

DATE MAIN INSTALLED: JULY 2008

DATE SERVICES EXTENDED: JULY 2008

INSTALLED BY: WESTERN INDUSTRIAL CONTRACTORS LTD.

WATER HISTORY:

DATE MAIN INSTALLED: JULY 2008

DATE SERVICES EXTENDED: JULY 2008

INSTALLED BY: WESTERN INDUSTRIAL CONTRACTORS LTD.

STORM HISTORY:

DATE MAIN INSTALLED: JULY 2008

DATE SERVICES EXTENDED: JULY 2008

INSTALLED BY: WESTERN INDUSTRIAL CONTRACTORS LTD.