

City of Prince George

HISTORY SHEET

PID: 029-723-663



Scale: 1:500

Legal: LOT 46

D.L.: 2425

PLAN: EPP55596

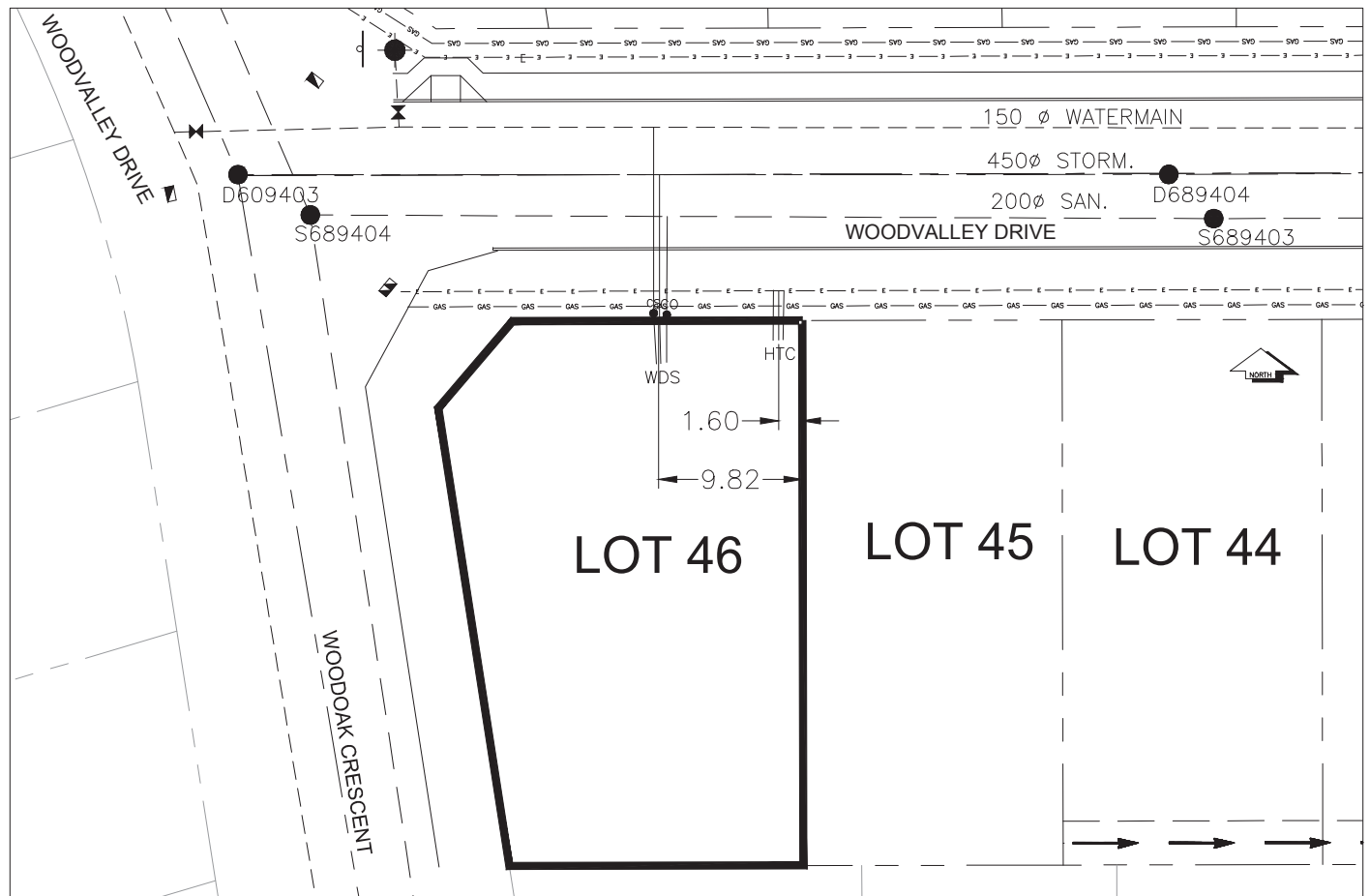
Address: 5481 WOODVALLEY DRIVE

| | | | | | | | |
|-------------------------|--------------|----------------|-----------|--------|---|----------------|-----------|
| Sanitary Connection:# | SIZE: | 100mmØ | MATERIAL: | PVC | INV. @ PL | 763.33m | CONNECTED |
| Water Connection:# | SIZE: | 19mmØ | MATERIAL: | COPPER | INV. @ PL | 763.53m | CONNECTED |
| Storm Connection:# | SIZE | 100mmØ | MATERIAL | PVC | INV. @ PL | 763.52m | CONNECTED |
| Cash Receipt No's: | WATER | | SANITARY | | STORM | | |
| CURB FROM PROPERTY LINE | 5m | | | | | PAVEMENT WIDTH | 10m |
| HYDRO | 75mm DB2 | U/G CONNECTION | | |  | | |
| TELEPHONE | 50mm DB2 | U/G CONNECTION | | |  | | |
| GAS | 42 PROP /P.E | | | | | | |

Information Sheets: REF DWGS L&M ENGINEERING LTD. JOB 1107-09-04 DWGS (001-302)

Comments: CS CURB STOP CO CLEAN OUT SDC WATER SERVICE SDC STORM SERVICE SDC SANITARY SERVICE HYDRO SERVICE CABLE SERVICE TELECOMMUNICATIONS GAS GAS ELECTRICAL

THE INFORMATION CONTAINED HEREIN IS FOR INTERNAL USE ONLY.
NOT TO BE RELIED UPON UNLESS CONFIRMED BY THE SITE INSPECTION AND/OR INVESTIGATION



| SANITARY, STORM & WATER SERVICE INVERTS | SANITARY | WATER | STORM |
|---|----------|---------|---------|
| 1. Distance from San. M.H. <u>689404</u> toward San. M.H. <u>689403</u> to lot service connection point is: | 24.40m | N/A | N/A |
| 1a.Distance from Stm. M.H. <u>609403</u> toward Stm. M.H. <u>689404</u> to lot service connection point is: | N/A | N/A | 28.81m |
| 2. Main Size at connection point is | 200mmØ | 150mmØ | 450mmØ |
| 3. Invert of main at conn. stub point is | 762.24m | 762.43m | 761.48m |
| 4. Invert at service end is | 763.67m | 763.63m | 763.62m |
| 5. Cover at property line in meters | 2.30m | 2.20m | 2.10m |
| 6. Survey Date:NOV 2007 Book Ref.:1107-09-03 By:FORESIGHT | | | |
| | | | |
| | | | |
| | | | |
| | | | |
| | | | |
| | | | |
| | | | |
| | | | |

SANITARY HISTORY:

DATE MAIN INSTALLED: 1995

DATE SERVICES EXTENDED: SEPT 2007

INSTALLED BY: WESTERN INDUSTRIAL CONTRACTORS LTD.

WATER HISTORY:

DATE MAIN INSTALLED: 1995

DATE SERVICES EXTENDED: SEPT 2007

INSTALLED BY: WESTERN INDUSTRIAL CONTRACTORS LTD.

STORM HISTORY:

DATE MAIN INSTALLED: 1995

DATE SERVICES EXTENDED: SEPT 2007

INSTALLED BY: WESTERN INDUSTRIAL CONTRACTORS LTD.