

City of Prince George

HISTORY SHEET

PID: 029-723-655

Scale: 1:500

Legal: LOT 45

D.L.: 2425

PLAN: EPP55596

Address: 5467 WOODVALLEY DRIVE

Sanitary Connection:#	SIZE: 100mmØ	MATERIAL: PVC	INV. @ PL	763.31m	CONNECTED
-----------------------	--------------	---------------	-----------	---------	-----------

Water Connection:#	SIZE: 19mmØ	MATERIAL: COPPER	INV. @ PL	763.27m	CONNECTED
--------------------	-------------	------------------	-----------	---------	-----------

Storm Connection:#	SIZE: 100mmØ	MATERIAL: PVC	INV. @ PL	763.34m	CONNECTED
--------------------	--------------	---------------	-----------	---------	-----------

Cash Receipt No's:	WATER	SANITARY	STORM
--------------------	-------	----------	-------

CURB FROM PROPERTY LINE	5m	PAVEMENT WIDTH	10m
-------------------------	----	----------------	-----

HYDRO	75mm DB2	U/G CONNECTION	✓
-------	----------	----------------	---

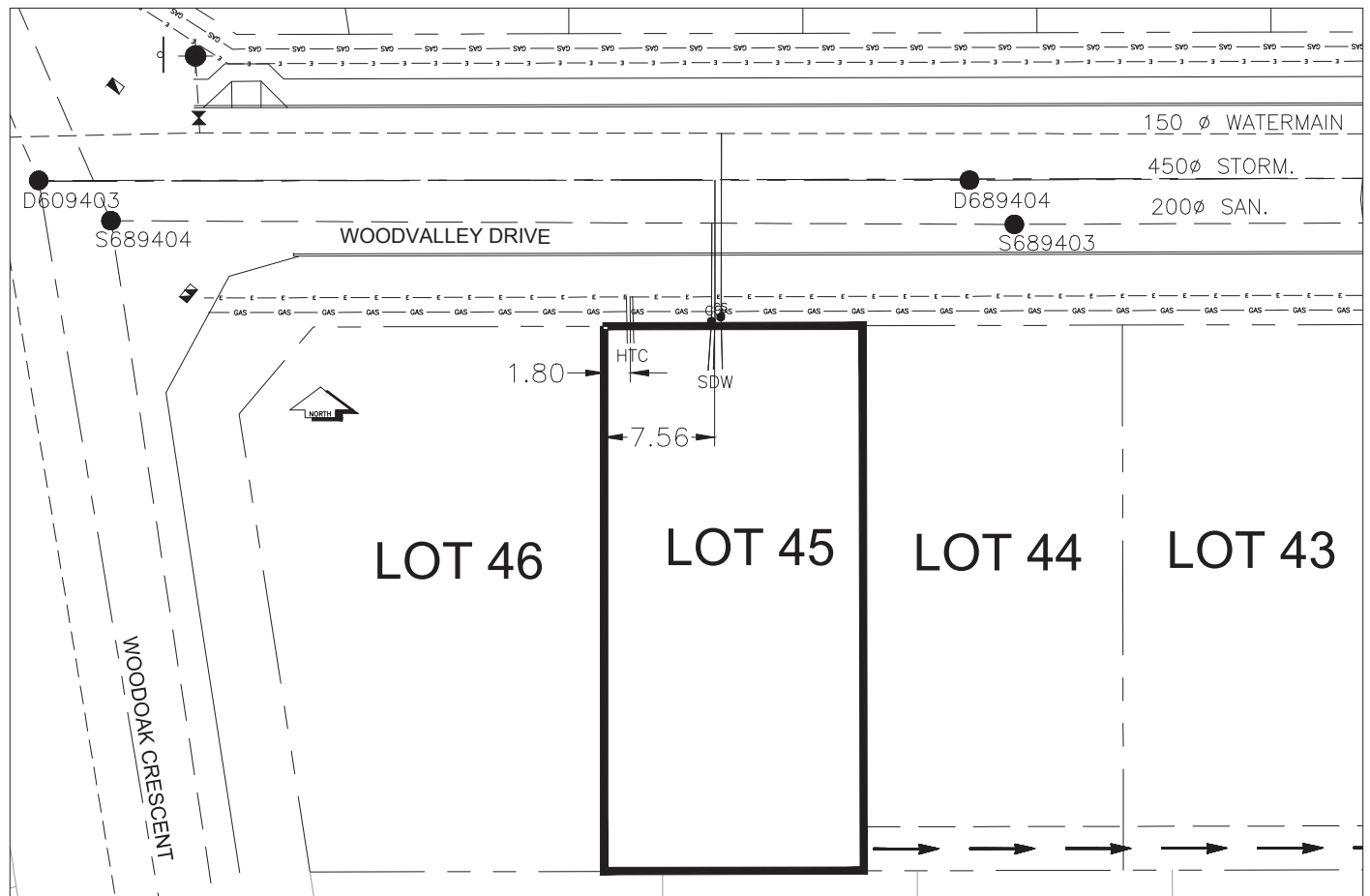
TELEPHONE	50mm DB2	U/G CONNECTION	✓
-----------	----------	----------------	---

GAS	42 PROP /P.E		
-----	--------------	--	--

Information Sheets: REF DWGS L&M ENGINEERING LTD. JOB 1107-09-04 DWGS (001-302)

Comments:	CS CURB STOP	SDW	WATER SERVICE	HYDRO SERVICE	GAS	GAS
	CO CLEAN OUT	SDW	STORM SERVICE	CABLE SERVICE	—	—
		SDW	SANITARY SERVICE	TELECOMMUNICATIONS	—	ELECTRICAL

THE INFORMATION CONTAINED HEREIN IS FOR INTERNAL USE ONLY.
NOT TO BE RELIED UPON UNLESS CONFIRMED BY THE SITE INSPECTION AND/OR INVESTIGATION



SANITARY, STORM & WATER SERVICE INVERTS	SANITARY	WATER	STORM
1. Distance from San. M.H. <u>689404</u> toward San. M.H. <u>689403</u> to lot service connection point is:	41.07m	N/A	N/A
1a.Distance from Stm. M.H. <u>609403</u> toward Stm. M.H. <u>689404</u> to lot service connection point is:	N/A	N/A	46.22m
2. Main Size at connection point is	200mmØ	150mmØ	450mmØ
3. Invert of main at conn. stub point is	762.09m	762.51m	761.35m
4. Invert at service end is	763.54m	763.44m	763.52m
5. Cover at property line in meters	2.58m	2.69m	2.54m
6. Survey Date:NOV 2007 Book Ref.:1107-09-03 By:FORESIGHT			

SANITARY HISTORY:

DATE MAIN INSTALLED: 1995

DATE SERVICES EXTENDED: SEPT 2007

INSTALLED BY: WESTERN INDUSTRIAL CONTRACTORS LTD.

WATER HISTORY:

DATE MAIN INSTALLED: 1995

DATE SERVICES EXTENDED: SEPT 2007

INSTALLED BY: WESTERN INDUSTRIAL CONTRACTORS LTD.

STORM HISTORY:

DATE MAIN INSTALLED: 1995

DATE SERVICES EXTENDED: SEPT 2007

INSTALLED BY: WESTERN INDUSTRIAL CONTRACTORS LTD.