

# City of Prince George

## HISTORY SHEET

PID: **029-723-604**

Scale: 1:500

Legal: LOT 40

D.L.: 2425

PLAN: EPP55596

Address: **5393 WOODVALLEY DRIVE**

Sanitary Connection:#	SIZE:	100mmØ	MATERIAL:	PVC	INV. @ PL	763.08m	CONNECTED
-----------------------	-------	--------	-----------	-----	-----------	---------	-----------

Water Connection:#	SIZE:	19mmØ	MATERIAL:	COPPER	INV. @ PL	763.04m	CONNECTED
--------------------	-------	-------	-----------	--------	-----------	---------	-----------

Storm Connection:#	SIZE	100mmØ	MATERIAL	PVC	INV. @ PL	763.07m	CONNECTED
--------------------	------	--------	----------	-----	-----------	---------	-----------

Cash Receipt No's:	WATER	SANITARY	STORM
--------------------	-------	----------	-------

CURB FROM PROPERTY LINE	5m	PAVEMENT WIDTH	10m
-------------------------	----	----------------	-----

HYDRO	75mm DB2	U/G CONNECTION	✓
-------	----------	----------------	---

TELEPHONE	50mm DB2	U/G CONNECTION	✓
-----------	----------	----------------	---

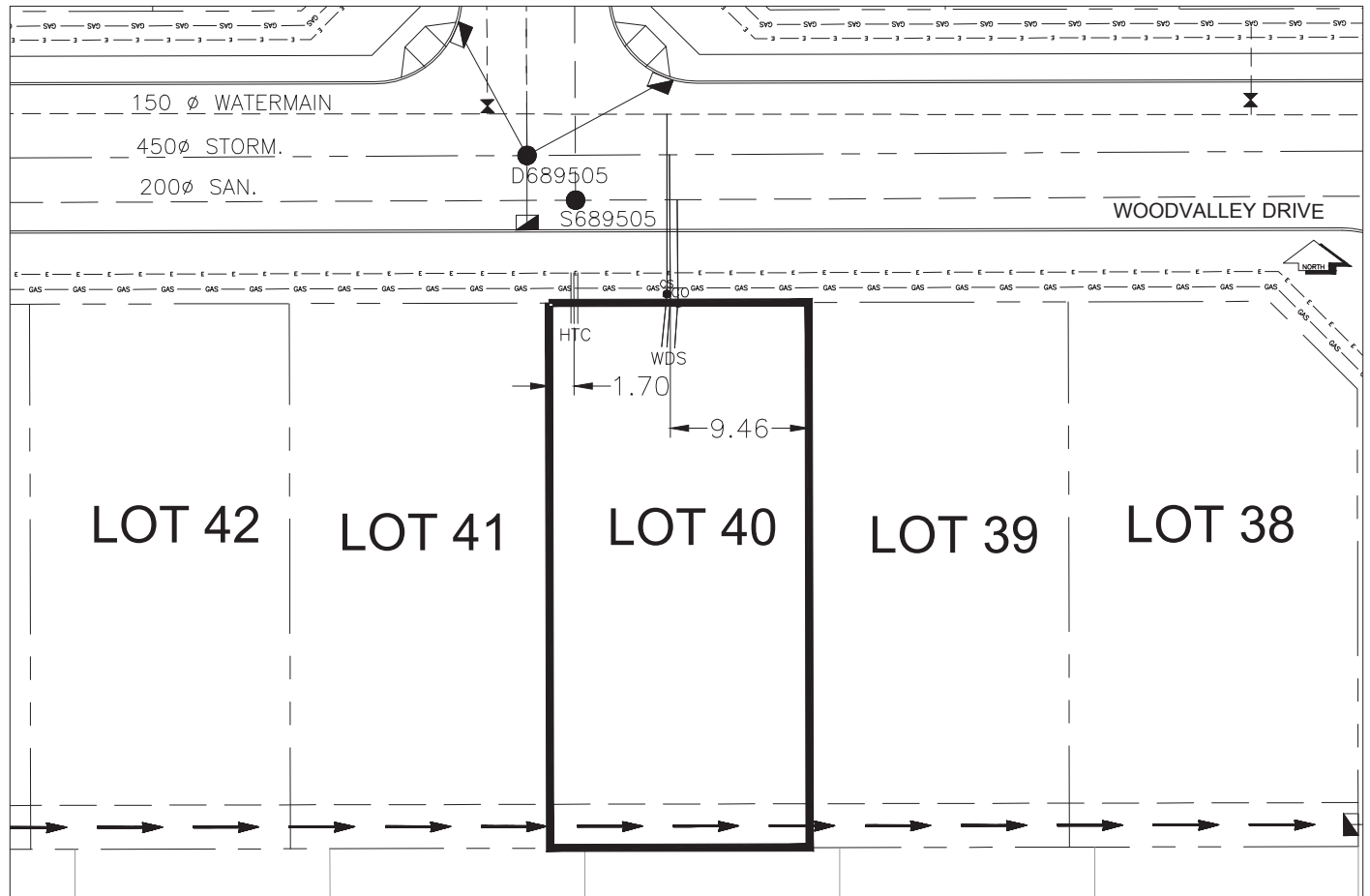
GAS	42 PROP /P.E
-----	--------------

Information Sheets: REF DWGS L&M ENGINEERING LTD. JOB 1107-09-04 DWGS (001-302)

Comments:

CS CURB STOP	WATER SERVICE	HYDRO SERVICE	GAS
CO CLEAN OUT	STORM SERVICE	CABLE SERVICE	ELECTRICAL
	SANITARY SERVICE	TELECOMMUNICATIONS	

**THE INFORMATION CONTAINED HEREIN IS FOR INTERNAL USE ONLY.  
NOT TO BE RELIED UPON UNLESS CONFIRMED BY THE SITE INSPECTION AND/OR INVESTIGATION**



SANITARY, STORM & WATER SERVICE INVERTS	SANITARY	WATER	STORM
1. Distance from San. M.H. <u>689505</u> toward San. M.H. <u>689504</u> to lot service connection point is:	6.95m	N/A	N/A
1a.Distance from Stm. M.H. <u>689505</u> toward Stm. M.H. <u>689504</u> to lot service connection point is:	N/A	N/A	9.73m
2. Main Size at connection point is	200mmØ	150mmØ	450mmØ
3. Invert of main at conn. stub point is	760.48m	762.59m	760.79m
4. Invert at service end is	763.46m	763.37m	763.43m
5. Cover at property line in meters	2.68m	2.80m	2.69m
6. Survey Date:NOV 2007    Book Ref.:1107-09-03    By:FORESIGHT			

**SANITARY HISTORY:**

DATE MAIN INSTALLED: 1995

DATE SERVICES EXTENDED: SEPT 2007

INSTALLED BY: WESTERN INDUSTRIAL CONTRACTORS LTD.

---

---

---

---

---

---

---

---

---

---

**WATER HISTORY:**

DATE MAIN INSTALLED: 1995

DATE SERVICES EXTENDED: SEPT 2007

INSTALLED BY: WESTERN INDUSTRIAL CONTRACTORS LTD.

---

---

---

---

---

---

---

---

---

---

**STORM HISTORY:**

DATE MAIN INSTALLED: 1995

DATE SERVICES EXTENDED: SEPT 2007

INSTALLED BY: WESTERN INDUSTRIAL CONTRACTORS LTD.

---

---

---

---

---

---

---

---

---

---