

City of Prince George

HISTORY SHEET

PID: **029-723-582**

Scale: 1:500

Legal: LOT 38

D.L.: 2425

PLAN: EPP55596

Address: **5355 WOODVALLEY DRIVE**

Sanitary Connection:#	SIZE: 100mmØ	MATERIAL: PVC	INV. @ PL	762.79m	CONNECTED
-----------------------	--------------	---------------	-----------	---------	-----------

Water Connection:#	SIZE: 19mmØ	MATERIAL: COPPER	INV. @ PL	762.93m	CONNECTED
--------------------	-------------	------------------	-----------	---------	-----------

Storm Connection:#	SIZE: 100mmØ	MATERIAL: PVC	INV. @ PL	762.59m	CONNECTED
--------------------	--------------	---------------	-----------	---------	-----------

Cash Receipt No's:	WATER	SANITARY	STORM
--------------------	-------	----------	-------

CURB FROM PROPERTY LINE	5m	PAVEMENT WIDTH	10m
-------------------------	----	----------------	-----

HYDRO	75mm DB2	U/G CONNECTION	✓
-------	----------	----------------	---

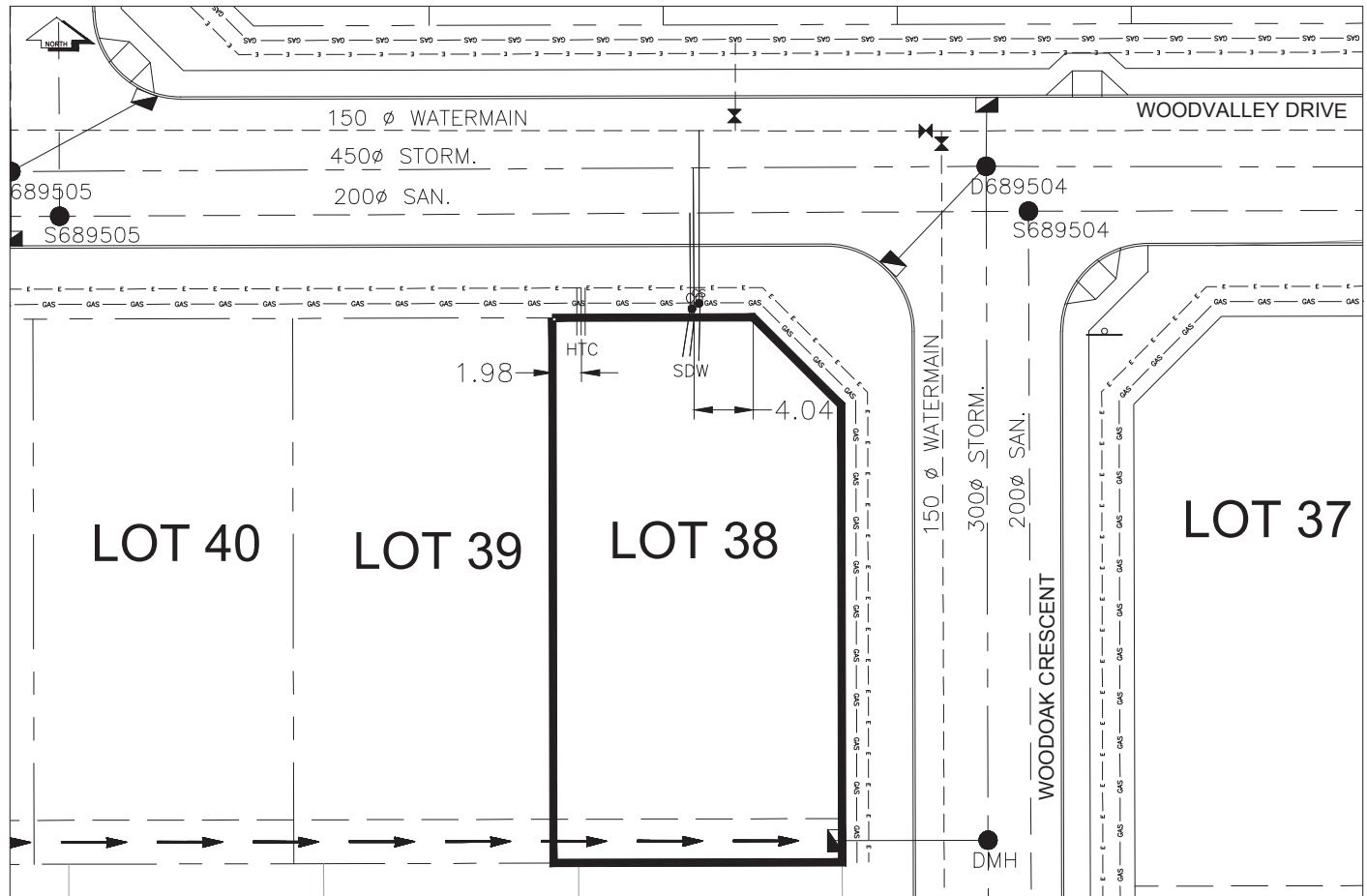
TELEPHONE	50mm DB2	U/G CONNECTION	✓
-----------	----------	----------------	---

GAS	42 PROP /P.E
-----	--------------

Information Sheets: REF DWGS L&M ENGINEERING LTD. JOB 1107-09-04 DWGS (001-302)

Comments: CS CURB STOP CO CLEAN OUT SDW WATER SERVICE STORM SERVICE SANITARY SERVICE HTC HYDRO SERVICE CABLE SERVICE TELECOMMUNICATIONS GAS GAS ELECTRICAL

THE INFORMATION CONTAINED HEREIN IS FOR INTERNAL USE ONLY.
NOT TO BE RELIED UPON UNLESS CONFIRMED BY THE SITE INSPECTION AND/OR INVESTIGATION



SANITARY, STORM & WATER SERVICE INVERTS	SANITARY	WATER	STORM
1. Distance from San. M.H. <u>689505</u> toward San. M.H. <u>689504</u> to lot service connection point is:	43.08m	N/A	N/A
1a.Distance from Stm. M.H. <u>689505</u> toward Stm. M.H. <u>689504</u> to lot service connection point is:	N/A	N/A	46.62m
2. Main Size at connection point is	200mmØ	150mmØ	450mmØ
3. Invert of main at conn. stub point is	760.09m	762.21m	760.63m
4. Invert at service end is	763.18m	763.16m	763.20m
5. Cover at property line in meters	2.67m	2.77m	2.70m
6. Survey Date:NOV 2007 Book Ref.:1107-09-03 By:FORESIGHT			

SANITARY HISTORY:

DATE MAIN INSTALLED: 1995

DATE SERVICES EXTENDED: SEPT 2007

INSTALLED BY: WESTERN INDUSTRIAL CONTRACTORS LTD.

WATER HISTORY:

DATE MAIN INSTALLED: 1995

DATE SERVICES EXTENDED: SEPT 2007

INSTALLED BY: WESTERN INDUSTRIAL CONTRACTORS LTD.

STORM HISTORY:

DATE MAIN INSTALLED: 1995

DATE SERVICES EXTENDED: SEPT 2007

INSTALLED BY: WESTERN INDUSTRIAL CONTRACTORS LTD.