

City of Prince George

HISTORY SHEET

PID: 029-723-531

Scale: 1:500

Legal: LOT 33

D.L.: 2425

PLAN: EPP55596

Address: 5215 WOODVALLEY DRIVE

Sanitary Connection:#	SIZE: 100mmØ	MATERIAL: PVC	INV. @ PL	760.96m	CONNECTED
-----------------------	--------------	---------------	-----------	---------	-----------

Water Connection:#	SIZE: 19mmØ	MATERIAL: COPPER	INV. @ PL	760.99m	CONNECTED
--------------------	-------------	------------------	-----------	---------	-----------

Storm Connection:#	SIZE: 100mmØ	MATERIAL: PVC	INV. @ PL	760.99m	CONNECTED
--------------------	--------------	---------------	-----------	---------	-----------

Cash Receipt No's:	WATER	SANITARY	STORM
--------------------	-------	----------	-------

CURB FROM PROPERTY LINE	5m	PAVEMENT WIDTH	10m
-------------------------	----	----------------	-----

HYDRO	75mm DB2	U/G CONNECTION	✓
-------	----------	----------------	---

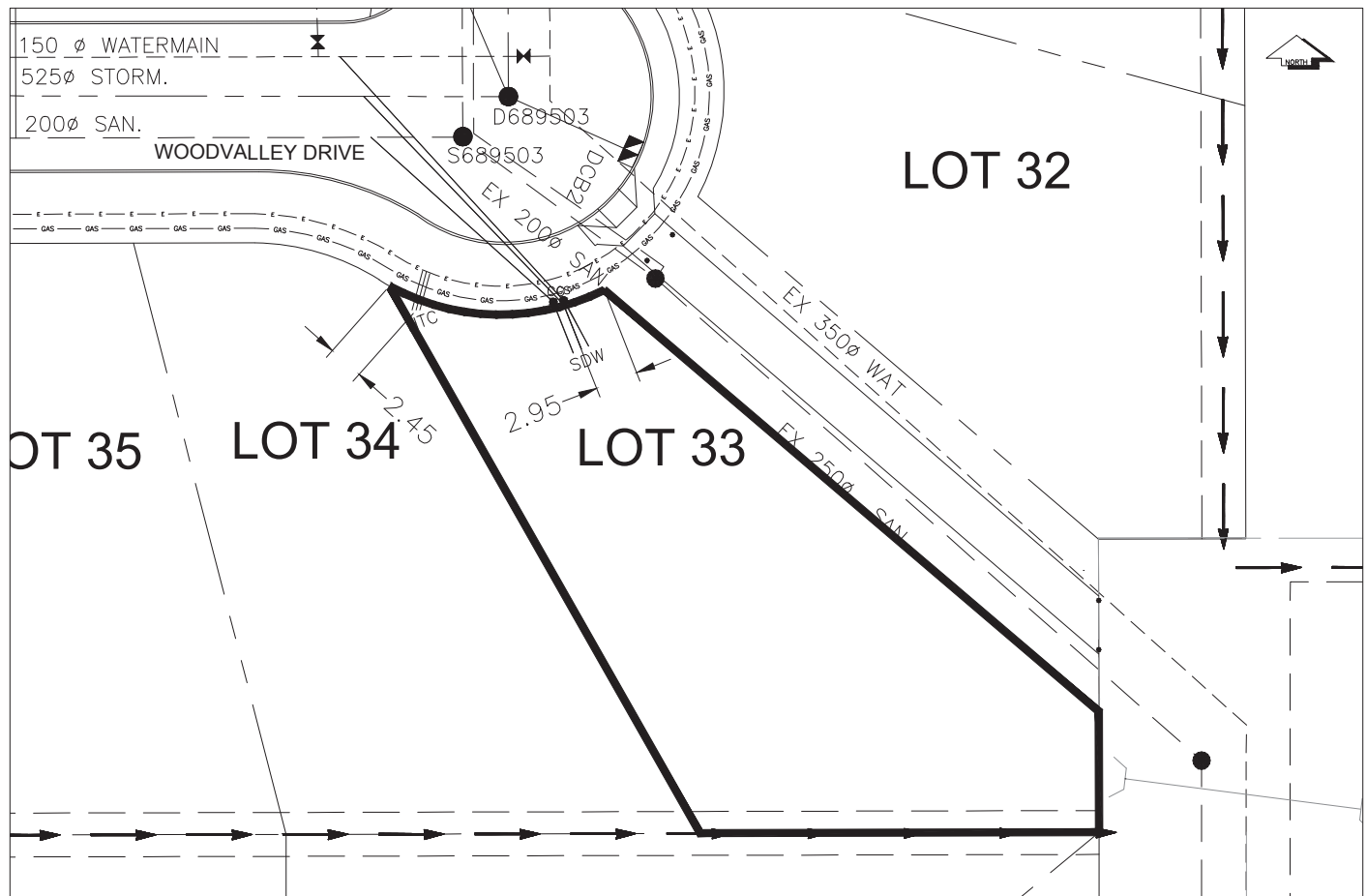
TELEPHONE	50mm DB2	U/G CONNECTION	✓
-----------	----------	----------------	---

GAS	42 PROP /P.E		
-----	--------------	--	--

Information Sheets: REF DWGS L&M ENGINEERING LTD. JOB 1107-09-04 DWGS (001-302)

Comments:	CS CURB STOP	SDW WATER SERVICE	HYDRO SERVICE	GAS GAS
	CO CLEAN OUT	SDW STORM SERVICE	CABLE SERVICE	ELECTRICAL
		SDW SANITARY SERVICE	TELECOMMUNICATIONS	

THE INFORMATION CONTAINED HEREIN IS FOR INTERNAL USE ONLY.
NOT TO BE RELIED UPON UNLESS CONFIRMED BY THE SITE INSPECTION AND/OR INVESTIGATION



SANITARY, STORM & WATER SERVICE INVERTS	SANITARY	WATER	STORM
1. Distance from San. M.H. <u>689504</u> toward San. M.H. <u>689503</u> to lot service connection point is:	74.42m	N/A	N/A
1a.Distance from Stm. M.H. <u>689504</u> toward Stm. M.H. <u>689503</u> to lot service connection point is:	N/A	N/A	76.82m
2. Main Size at connection point is	200mmØ	150mmØ	525mmØ
3. Invert of main at conn. stub point is	759.71m	761.22m	760.22m
4. Invert at service end is	761.15m	761.07m	761.16m
5. Cover at property line in meters	2.41m	2.47m	2.39m
6. Survey Date:NOV 2007 Book Ref.:1107-09-03 By:FORESIGHT			

SANITARY HISTORY:

DATE MAIN INSTALLED: 1995

DATE SERVICES EXTENDED: SEPT 2007

INSTALLED BY: WESTERN INDUSTRIAL CONTRACTORS LTD.

WATER HISTORY:

DATE MAIN INSTALLED: 1995

DATE SERVICES EXTENDED: SEPT 2007

INSTALLED BY: WESTERN INDUSTRIAL CONTRACTORS LTD.

STORM HISTORY:

DATE MAIN INSTALLED: 1995

DATE SERVICES EXTENDED: SEPT 2007

INSTALLED BY: WESTERN INDUSTRIAL CONTRACTORS LTD.