

City of Prince George

HISTORY SHEET

PID: **029-723-451**



Scale: 1:500

Legal: LOT 25

D.L.: 2425

PLAN: EPP55596

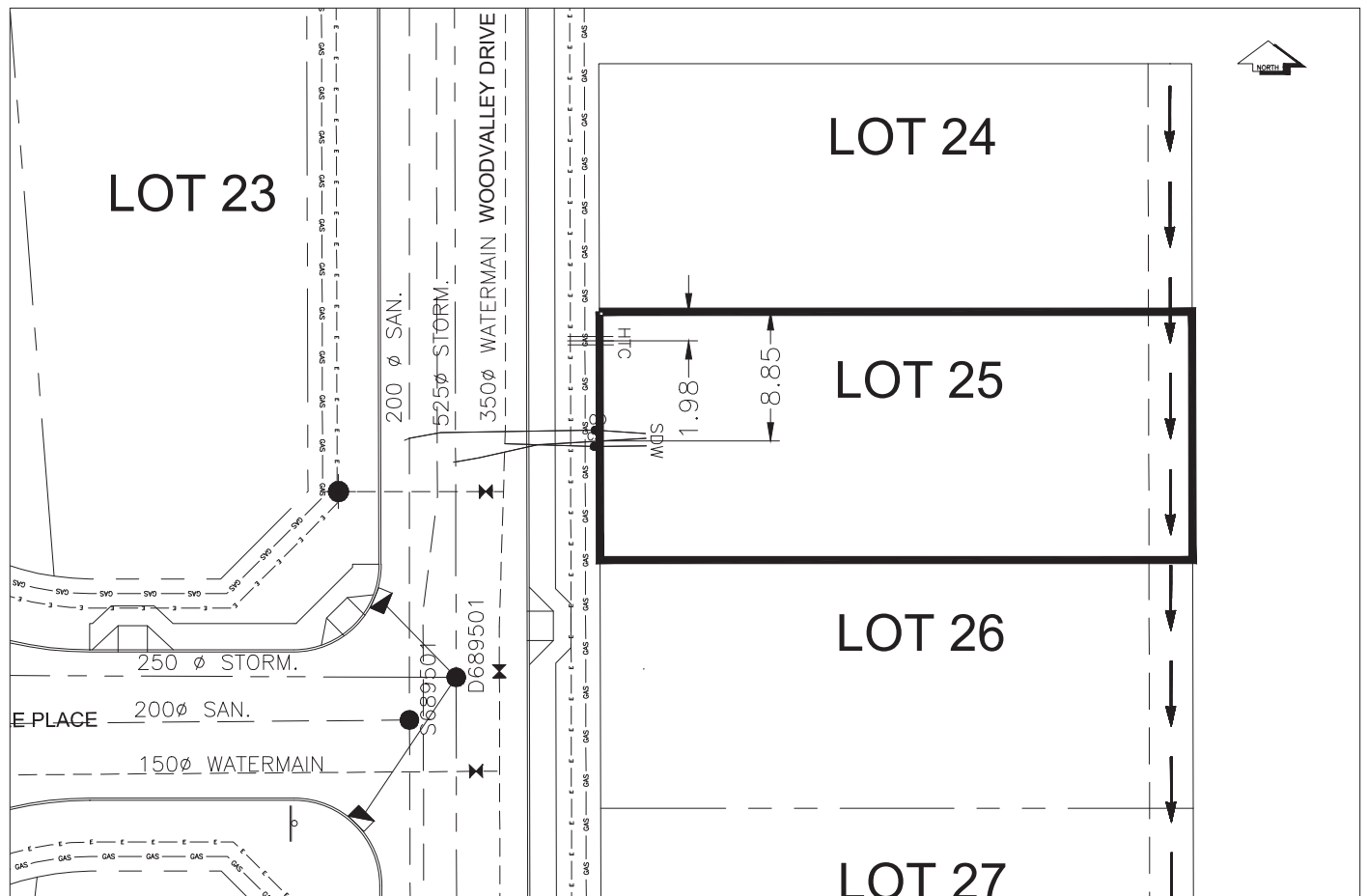
Address: **5136 WOODVALLEY DRIVE**

Sanitary Connection:#	SIZE:	100mmØ	MATERIAL:	PVC	INV. @ PL	762.76m	CONNECTED
Water Connection:#	SIZE:	19mmØ	MATERIAL:	COPPER	INV. @ PL	762.45m	CONNECTED
Storm Connection:#	SIZE	100mmØ	MATERIAL	PVC	INV. @ PL	762.77m	CONNECTED
Cash Receipt No's:	WATER		SANITARY		STORM		
CURB FROM PROPERTY LINE	5m					PAVEMENT WIDTH	10m
HYDRO	75mm DB2	U/G CONNECTION					
TELEPHONE	50mm DB2	U/G CONNECTION					
GAS	42 PROP /P.E						

Information Sheets: REF DWGS L&M ENGINEERING LTD. JOB 1107-09-04 DWGS (001-302)

Comments: CS CURB STOP SDW WATER SERVICE TOH HYDRO SERVICE
CO CLEAN OUT STORM SERVICE CABLE SERVICE
SANITARY SERVICE TELECOMMUNICATIONS GAS GAS
ELECTRICAL

THE INFORMATION CONTAINED HEREIN IS FOR INTERNAL USE ONLY.
NOT TO BE RELIED UPON UNLESS CONFIRMED BY THE SITE INSPECTION AND/OR INVESTIGATION



SANITARY, STORM & WATER SERVICE INVERTS	SANITARY	WATER	STORM
1. Distance from San. M.H. ____ - ____ toward San. M.H. <u>689501</u> to lot service connection point is:	41.56m	N/A	N/A
1a.Distance from Stm. M.H. <u>689501</u> toward Stm. M.H. <u>DMH</u> to lot service connection point is:	N/A	N/A	14.76m
2. Main Size at connection point is	200mmØ	350mmØ	525mmØ
3. Invert of main at conn. stub point is	760.31m	761.38m	759.53m
4. Invert at service end is	762.83m	762.78m	762.84m
5. Cover at property line in meters	2.27m	2.66m	2.39m
6. Survey Date:NOV 2007 Book Ref.:1107-09-03 By:FORESIGHT			

SANITARY HISTORY:

DATE MAIN INSTALLED: JUN 2008

DATE SERVICES EXTENDED: JUN 2008

INSTALLED BY: WESTERN INDUSTRIAL CONTRACTORS LTD.

WATER HISTORY:

DATE MAIN INSTALLED: JUN 2008

DATE SERVICES EXTENDED: JUN 2008

INSTALLED BY: WESTERN INDUSTRIAL CONTRACTORS LTD.

STORM HISTORY:

DATE MAIN INSTALLED: JUN 2008

DATE SERVICES EXTENDED: JUN 2008

INSTALLED BY: WESTERN INDUSTRIAL CONTRACTORS LTD.