

# City of Prince George

## HISTORY SHEET

PID: 029-723-329

Scale: 1:500

Legal: LOT 12

D.L.: 2425

PLAN: EPP55596

Address: 5284 WOODVALLEY DRIVE

Sanitary Connection:#	SIZE: 100mmØ	MATERIAL: PVC	INV. @ PL	762.28m	CONNECTED
-----------------------	--------------	---------------	-----------	---------	-----------

Water Connection:#	SIZE: 19mmØ	MATERIAL: COPPER	INV. @ PL	762.41m	CONNECTED
--------------------	-------------	------------------	-----------	---------	-----------

Storm Connection:#	SIZE: 100mmØ	MATERIAL: PVC	INV. @ PL	762.30m	CONNECTED
--------------------	--------------	---------------	-----------	---------	-----------

Cash Receipt No's:	WATER	SANITARY	STORM
--------------------	-------	----------	-------

CURB FROM PROPERTY LINE	5m	PAVEMENT WIDTH	10m
-------------------------	----	----------------	-----

HYDRO	75mm DB2	U/G CONNECTION	✓
-------	----------	----------------	---

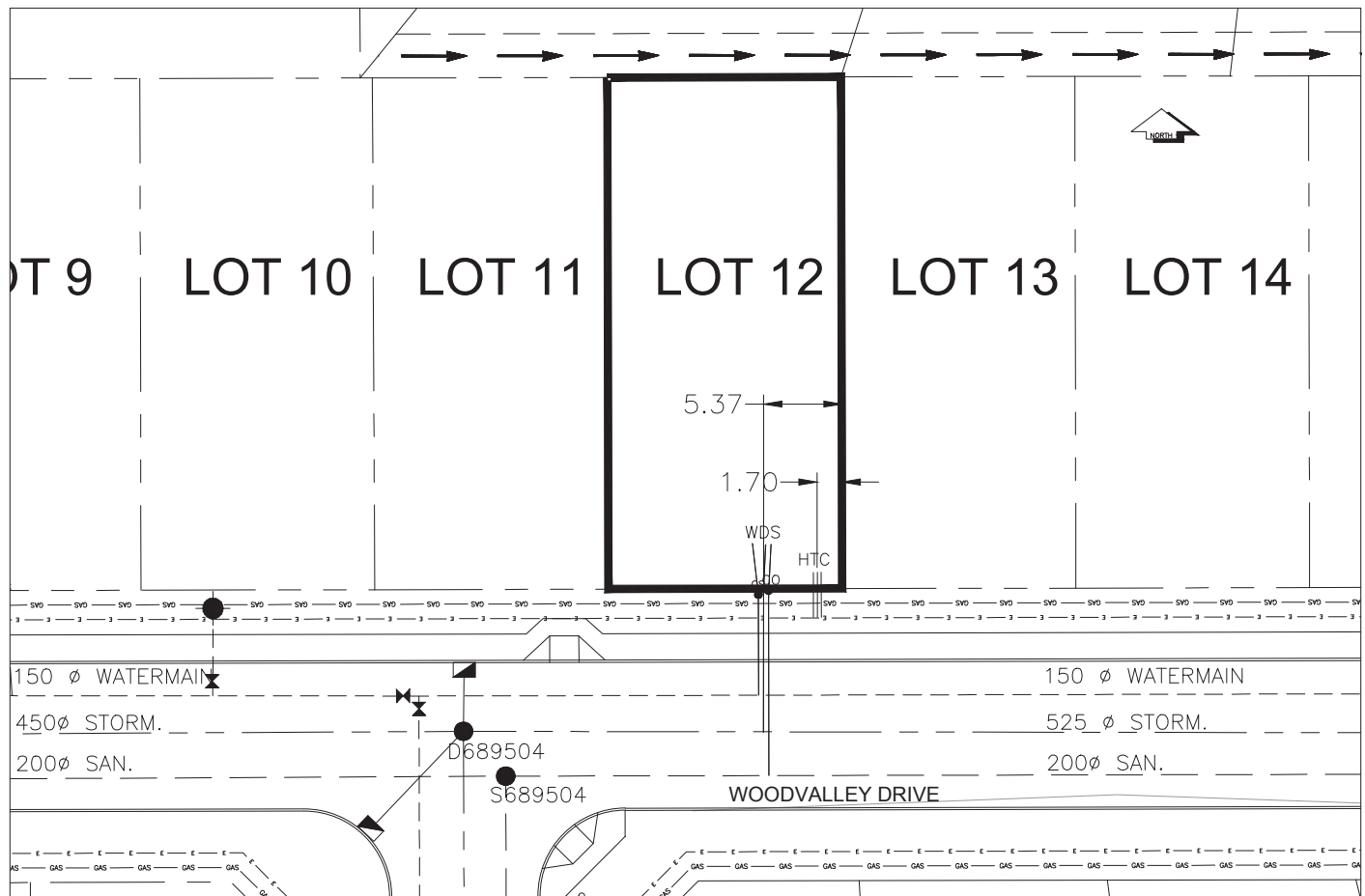
TELEPHONE	50mm DB2	U/G CONNECTION	✓
-----------	----------	----------------	---

GAS	42 PROP /P.E		
-----	--------------	--	--

Information Sheets: REF DWGS L&M ENGINEERING LTD. JOB 1107-09-04 DWGS (001-302)

Comments:	CS CURB STOP CO CLEAN OUT	WDS WATER SERVICE STS STORM SERVICE SNT SANITARY SERVICE	HTC HYDRO SERVICE CBL CABLE SERVICE TEL TELECOMMUNICATIONS	GAS GAS ELECTRICAL
-----------	------------------------------	--	--	-----------------------

THE INFORMATION CONTAINED HEREIN IS FOR INTERNAL USE ONLY.  
NOT TO BE RELIED UPON UNLESS CONFIRMED BY THE SITE INSPECTION AND/OR INVESTIGATION



SANITARY, STORM & WATER SERVICE INVERTS	SANITARY	WATER	STORM
1. Distance from San. M.H. <u>689504</u> toward San. M.H. <u>689503</u> to lot service connection point is:	18.03m	N/A	N/A
1a.Distance from Stm. M.H. <u>689504</u> toward Stm. M.H. <u>689503</u> to lot service connection point is:	N/A	N/A	20.54m
2. Main Size at connection point is	200mmØ	150mmØ	450mmØ
3. Invert of main at conn. stub point is	759.95m	761.81m	760.46m
4. Invert at service end is	762.60m	762.61m	762.63m
5. Cover at property line in meters	2.61m	2.56m	2.59m
6. Survey Date:NOV 2007    Book Ref.:1107-09-03    By:FORESIGHT			

### SANITARY HISTORY:

DATE MAIN INSTALLED: 1995

DATE SERVICES EXTENDED: SEPT 2007

INSTALLED BY: WESTERN INDUSTRIAL CONTRACTORS LTD.

### WATER HISTORY:

DATE MAIN INSTALLED: 1995

DATE SERVICES EXTENDED: SEPT 2007

INSTALLED BY: WESTERN INDUSTRIAL CONTRACTORS LTD.

### STORM HISTORY:

DATE MAIN INSTALLED: 1995

DATE SERVICES EXTENDED: SEPT 2007

INSTALLED BY: WESTERN INDUSTRIAL CONTRACTORS LTD.