

City of Prince George

HISTORY SHEET

PID: **029-723-302**

Scale: 1:500

Legal: LOT 10

D.L.: 2425

PLAN: EPP55596

Address: **5344 WOODVALLEY DRIVE**

Sanitary Connection:#	SIZE: 100mmØ	MATERIAL: PVC	INV. @ PL	762.84m	CONNECTED
-----------------------	--------------	---------------	-----------	---------	-----------

Water Connection:#	SIZE: 19mmØ	MATERIAL: COPPER	INV. @ PL	762.66m	CONNECTED
--------------------	-------------	------------------	-----------	---------	-----------

Storm Connection:#	SIZE: 100mmØ	MATERIAL: PVC	INV. @ PL	762.74m	CONNECTED
--------------------	--------------	---------------	-----------	---------	-----------

Cash Receipt No's:	WATER	SANITARY	STORM
--------------------	-------	----------	-------

CURB FROM PROPERTY LINE	5m	PAVEMENT WIDTH	10m
-------------------------	----	----------------	-----

HYDRO	75mm DB2	U/G CONNECTION	✓
-------	----------	----------------	---

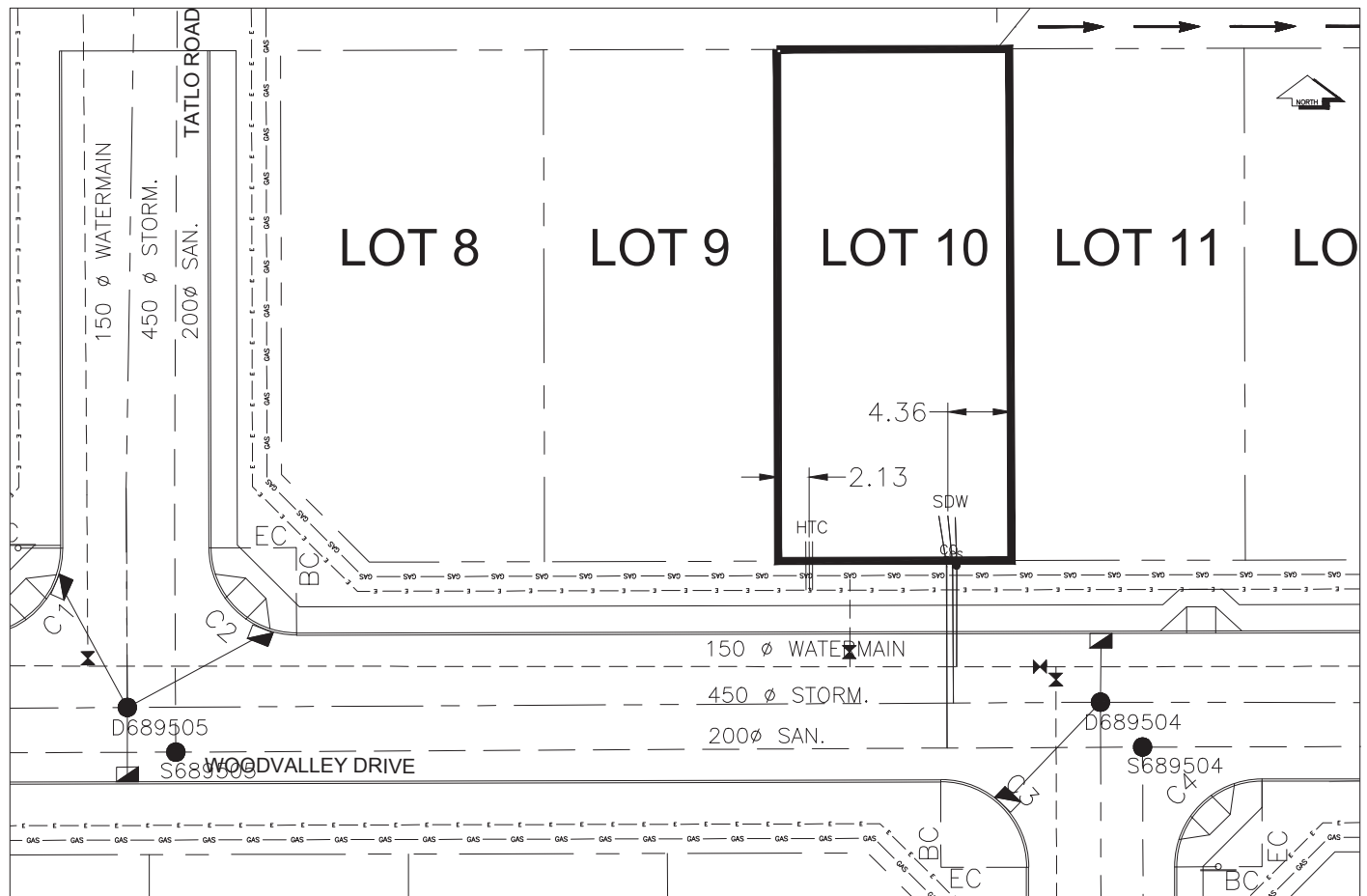
TELEPHONE	50mm DB2	U/G CONNECTION	✓
-----------	----------	----------------	---

GAS	42 PROP /P.E		
-----	--------------	--	--

Information Sheets: REF DWGS L&M ENGINEERING LTD. JOB 1107-09-04 DWGS (001-302)

Comments: CS CURB STOP SDW WATER SERVICE HYDRO SERVICE GAS GAS
CO CLEAN OUT SDC STORM SERVICE CABLE SERVICE TELECOMMUNICATIONS ELECTRICAL

THE INFORMATION CONTAINED HEREIN IS FOR INTERNAL USE ONLY.
NOT TO BE RELIED UPON UNLESS CONFIRMED BY THE SITE INSPECTION AND/OR INVESTIGATION



SANITARY, STORM & WATER SERVICE INVERTS	SANITARY	WATER	STORM
1. Distance from San. M.H. <u>689505</u> toward San. M.H. <u>689504</u> to lot service connection point is:	52.84m	N/A	N/A
1a.Distance from Stm. M.H. <u>689505</u> toward Stm. M.H. <u>689504</u> to lot service connection point is:	N/A	N/A	56.58m
2. Main Size at connection point is	200mmØ	150mmØ	450mmØ
3. Invert of main at conn. stub point is	760.17m	762.11m	760.59m
4. Invert at service end is	763.19m	763.08m	763.16m
5. Cover at property line in meters	2.51m	2.76m	2.61m
6. Survey Date:NOV 2007 Book Ref.:1107-09-03 By:FORESIGHT			

SANITARY HISTORY:

DATE MAIN INSTALLED: 1995

DATE SERVICES EXTENDED: SEPT 2007

INSTALLED BY: WESTERN INDUSTRIAL CONTRACTORS LTD.

WATER HISTORY:

DATE MAIN INSTALLED: 1995

DATE SERVICES EXTENDED: SEPT 2007

INSTALLED BY: WESTERN INDUSTRIAL CONTRACTORS LTD.

STORM HISTORY:

DATE MAIN INSTALLED: 1995

DATE SERVICES EXTENDED: SEPT 2007

INSTALLED BY: WESTERN INDUSTRIAL CONTRACTORS LTD.