

# City of Prince George

## HISTORY SHEET

PID: 029-723-281

Scale: 1:500

Legal: LOT 8

D.L.: 2425

PLAN: EPP55596

Address: 5388 WOODVALLEY DRIVE

Sanitary Connection:#	SIZE: 100mmØ	MATERIAL: PVC	INV. @ PL	763.27m	CONNECTED
-----------------------	--------------	---------------	-----------	---------	-----------

Water Connection:#	SIZE: 19mmØ	MATERIAL: COPPER	INV. @ PL	763.11m	CONNECTED
--------------------	-------------	------------------	-----------	---------	-----------

Storm Connection:#	SIZE: 100mmØ	MATERIAL: PVC	INV. @ PL	763.29m	CONNECTED
--------------------	--------------	---------------	-----------	---------	-----------

Cash Receipt No's:	WATER	SANITARY	STORM
--------------------	-------	----------	-------

CURB FROM PROPERTY LINE	5m	PAVEMENT WIDTH	10m
-------------------------	----	----------------	-----

HYDRO	75mm DB2	U/G CONNECTION	✓
-------	----------	----------------	---

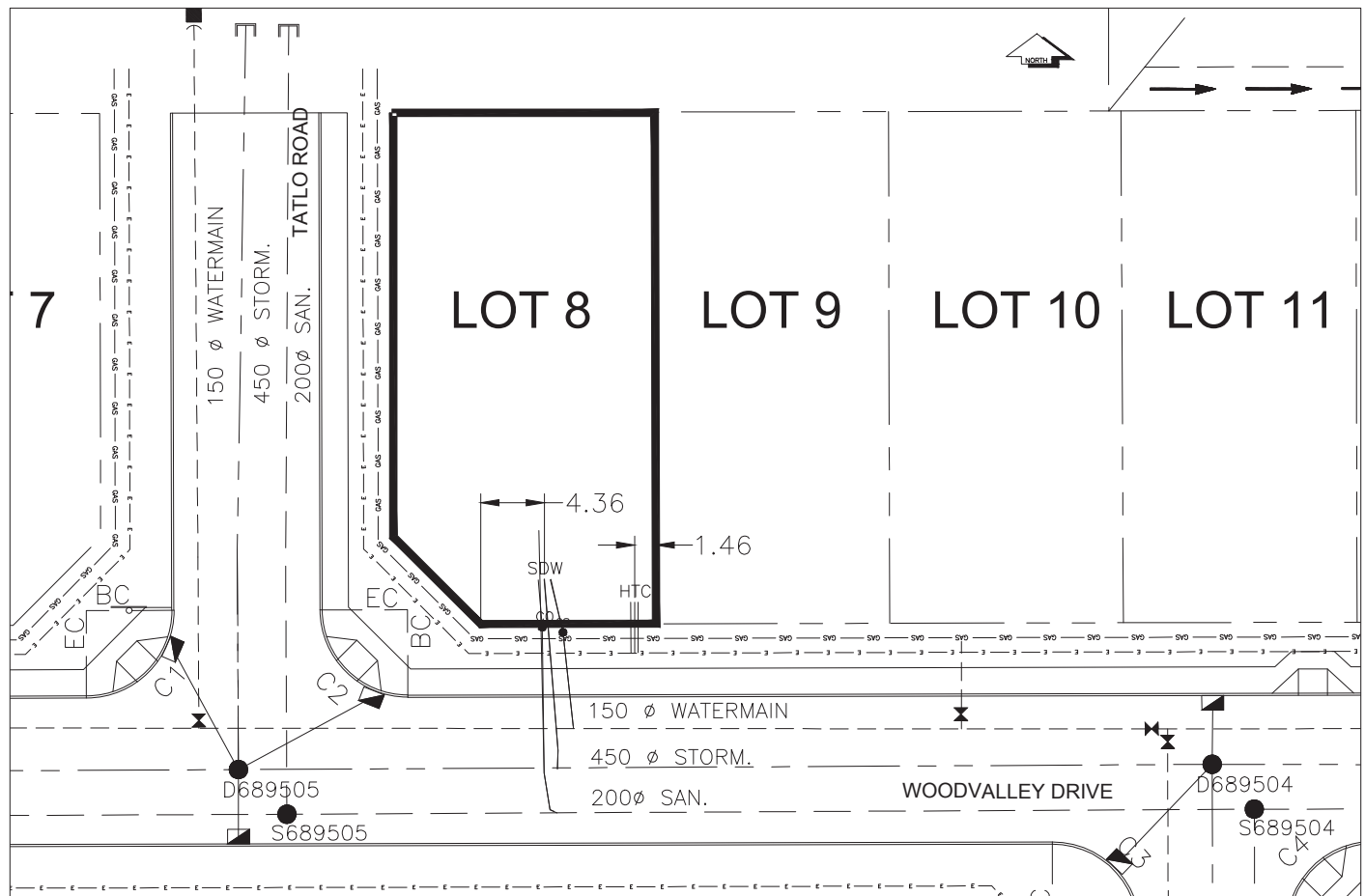
TELEPHONE	50mm DB2	U/G CONNECTION	✓
-----------	----------	----------------	---

GAS	42 PROP /P.E		
-----	--------------	--	--

Information Sheets: REF DWGS L&M ENGINEERING LTD. JOB 1107-09-04 DWGS (001-302)

Comments:	CS CURB STOP	SDW WATER SERVICE	HTC HYDRO SERVICE	— GAS — GAS
	CO CLEAN OUT	STW STORM SERVICE	CTH CABLE SERVICE	— E — E — ELECTRICAL
		SSW SANITARY SERVICE	TELECOMMUNICATIONS	

THE INFORMATION CONTAINED HEREIN IS FOR INTERNAL USE ONLY.  
NOT TO BE RELIED UPON UNLESS CONFIRMED BY THE SITE INSPECTION AND/OR INVESTIGATION



SANITARY, STORM & WATER SERVICE INVERTS	SANITARY	WATER	STORM
1. Distance from San. M.H. <u>689505</u> toward San. M.H. <u>689504</u> to lot service connection point is:	18.49m	N/A	N/A
1a.Distance from Stm. M.H. <u>689505</u> toward Stm. M.H. <u>689504</u> to lot service connection point is:	N/A	N/A	21.85m
2. Main Size at connection point is	200mmØ	150mmØ	450mmØ
3. Invert of main at conn. stub point is	760.33m	762.29m	760.86m
4. Invert at service end is	763.45m	763.41m	763.45m
5. Cover at property line in meters	2.36m	2.60m	2.34m
6. Survey Date:NOV 2007    Book Ref.:1107-09-03    By:FORESIGHT			

**SANITARY HISTORY:**

DATE MAIN INSTALLED: 1995

DATE SERVICES EXTENDED: SEPT 2007

INSTALLED BY: WESTERN INDUSTRIAL CONTRACTORS LTD.

**WATER HISTORY:**

DATE MAIN INSTALLED: 1995

DATE SERVICES EXTENDED: SEPT 2007

INSTALLED BY: WESTERN INDUSTRIAL CONTRACTORS LTD.

**STORM HISTORY:**

DATE MAIN INSTALLED: 1995

DATE SERVICES EXTENDED: SEPT 2007

INSTALLED BY: WESTERN INDUSTRIAL CONTRACTORS LTD.