



City of Prince George  
**History Sheet**

PID:	029704553
SD/MU:	
WO:	

Civic Address: 1617 Victoria St

Legal Description: Lot: A District Lot: 343 Plan: EPP48140

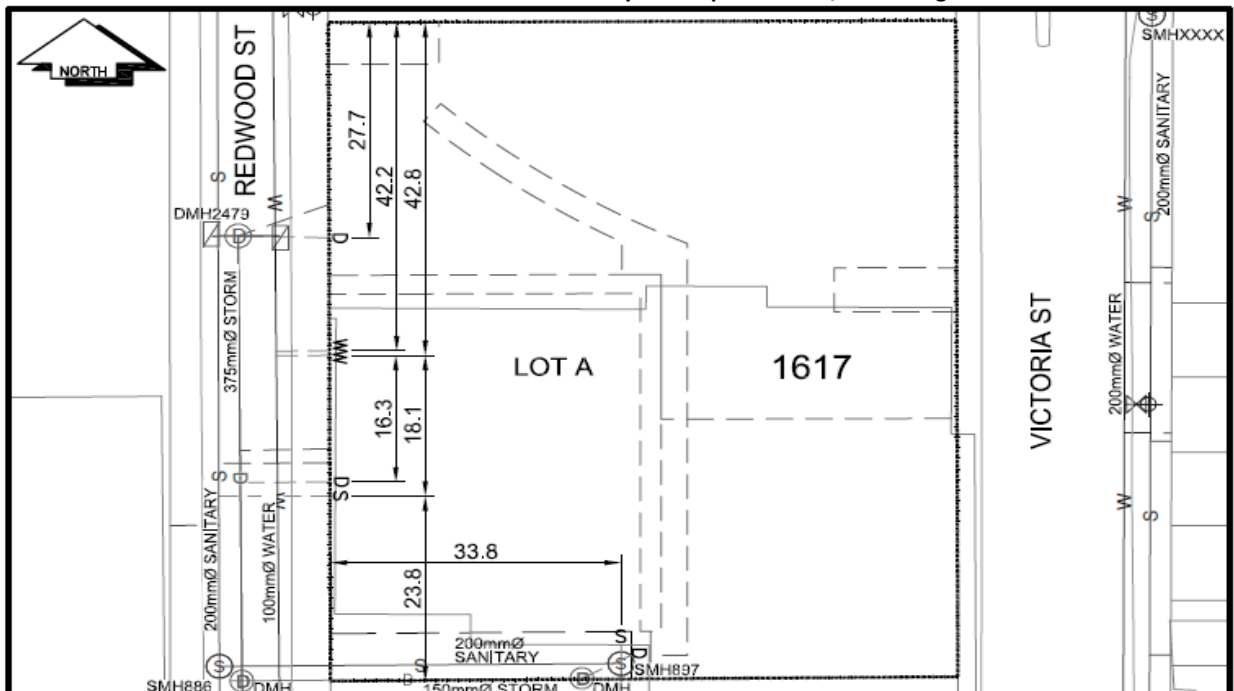
Service Type	Diameter (mm)	Material	Invert Elev at main (m)	Invert Elev at property line (m)	Invert Depth at service end (m)	Distance into property (m)	Installation Date
Sanitary(Redwod)	100mm	AC	-	-	-	-	January 1970
Sanitary (ROW)	150mm	PVC	-	569.23	1.72	-	November 1968
Water (North))	40mm	Copper	-	-	-	-	November 1976
Water (South)	100mm	Copper	-	-	-	-	November 1976
Storm (North)	150mm	AC	-	569.79	1.18	-	June 1969
Storm (South)	150mm	AC	-	569.98	1.14	-	January 1967
Storm (ROW)	100mm	AC	-	569.70	1.73	-	October 1976

Service Connection Location				Sanitary (m)	Storm (m)
Distance from downstream San MH	883	towards upstream San MH	886	74.80	
150mm Sanitary service connected to San MH897					
150mm Storm service connected to Stm MH 2479					
Distance from downstream Stm MH	-	towards upstream Stm MH	2479		26.80
100mm Storm service connected to Stm Mh in ROW					

Power	Size	Communications	Size	Cable	Size	Gas	Size
BC Hydro	-	Telus	-	Shaw	-	FortisBC	-
Overhead Service		Overhead Service		Overhead Service			

Installed by:	Survey Date:	-
Comments:		

**NOT TO SCALE** The information contained herein is for internal use only.  
Not to be relied on unless confirmed by site inspection and/or investigation.



CS	CURB STOP	---	W	WATER SERVICE	---	○	STORM SERVICE
CO	CLEAN OUT	---	S	SANITARY SERVICE	---	G	GAS
WV	WATER VALVE	---	FH	FIRE HYDRANT	---	---	ENCUMBRANCE

**NOT TO SCALE**