

# City of Prince George

## HISTORY SHEET

PID: 029-639-310

Scale: 1:500

Legal: LOT 24

D.L.: 905

PLAN: EPP51089

Address: 2468 CHANCELLOR BLVD

Sanitary Connection:#	SIZE: 100mmØ	MATERIAL: PVC	INV. AT R 720.05m	CONNECTED
-----------------------	--------------	---------------	-------------------	-----------

Water Connection:#	SIZE: 19mmØ	MATERIAL: COPPER	INV. AT R 720.04m	CONNECTED
--------------------	-------------	------------------	-------------------	-----------

Storm Connection:#	SIZE: 100mmØ	MATERIAL: PVC	INV. AT R 720.05m	CONNECTED
--------------------	--------------	---------------	-------------------	-----------

Cash Receipt No's:	WATER	SANITARY	STORM
--------------------	-------	----------	-------

CURB FROM PROPERTY LINE	6m	PAVEMENT WIDTH	13m
-------------------------	----	----------------	-----

HYDRO	75mm DB2	U/G CONNECTION	✓
-------	----------	----------------	---

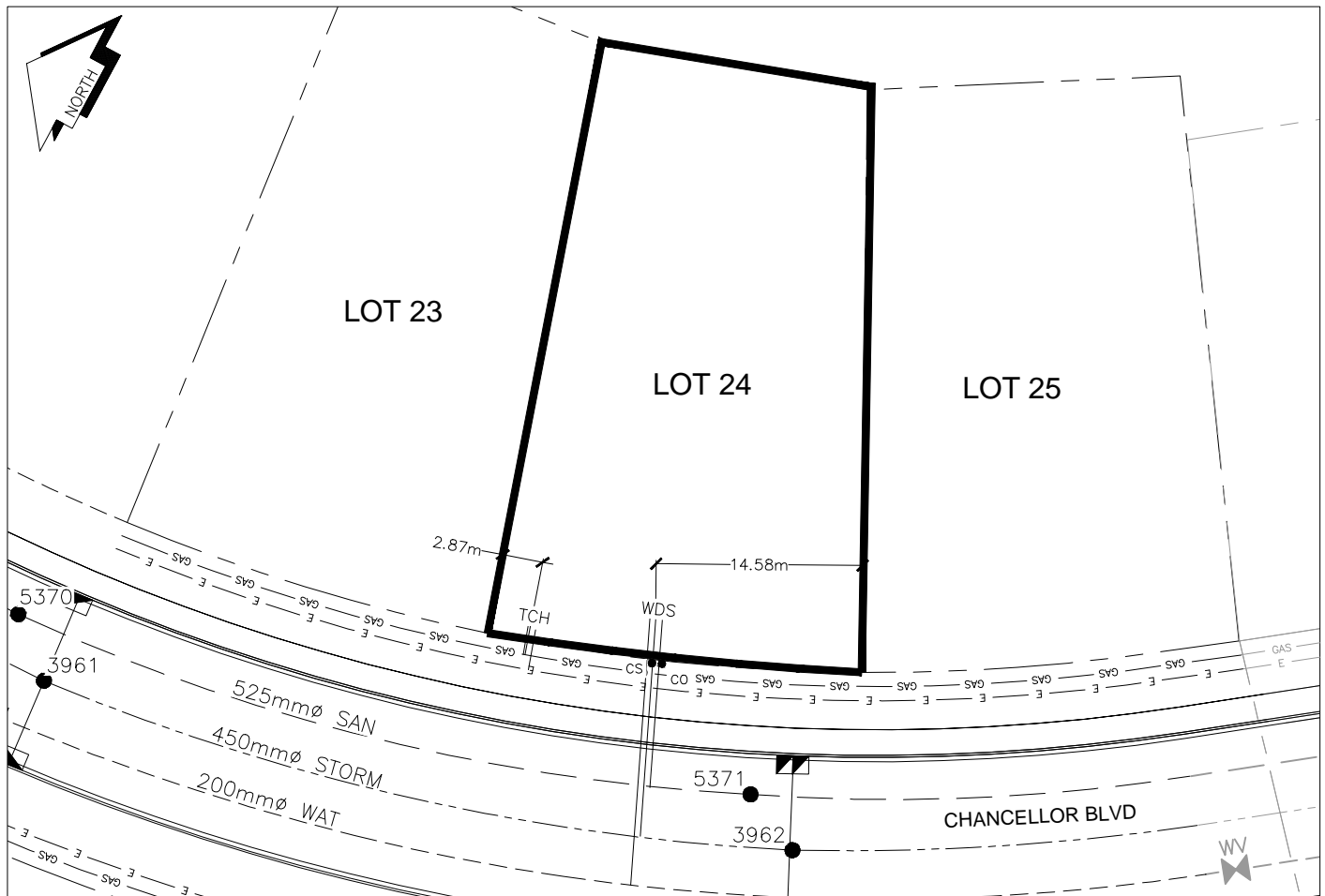
TELEPHONE	50mm DB2	U/G CONNECTION	✓
-----------	----------	----------------	---

GAS	42 PROP/P.E.		
-----	--------------	--	--

Information Sheets: REF. DWGS. L&M ENGINEERING LTD. JOB. 1273-19 DWGS.

Comments:	CS CURB STOP CO CLEAN OUT	WDS WATER SERVICE SWS STORM SERVICE SAS SANITARY SERVICE	HYDRO SERVICE CABLE SERVICE TELECOMMUNICATIONS	GAS GAS E ELECTRICAL
-----------	------------------------------	--	--	-------------------------

THE INFORMATION CONTAINED HEREIN IS FOR IN CHANCELLOR BLVD Y.  
NOT TO BE RELIED UPON UNLESS CONFIRMED BY THE SITE INSPECTION AND/OR INVESTIGATION



SANITARY, STORM & WATER SERVICE INVERTS	SANITARY	WATER	STORM
1. Distance from San. M.H. <u>5371</u> toward San. M.H. <u>5370</u> to lot service connection point is:	7.30m	N/A	N/A
1a.Distance from Stm. M.H. <u>3962</u> toward Stm. M.H. <u>3961</u> to lot service connection point is:	N/A	N/A	10.65m
2. Main Size at connection point is	525mmØ	200mmØ	450mmØ
3. Invert of service at main conn. stub point is	719.72m	719.17m	719.44m
4. Invert at service end is	720.10m	720.08m	720.10m
5. Cover at property line in meters	2.23m	2.36m	2.25m
6. Survey Date:JUNE 2015 Book Ref.:1273-19 By:L&M ENGINEERIG			

SANITARY HISTORY:

DATE INSTALLED: JUNE 2015

INSTALLED BY: JOE ROBERTS CONSTRUCTION & CONSULTING SERVICE LTD.

WATER HISTORY:

DATE INSTALLED: JUNE 2015

INSTALLED BY: JOE ROBERTS CONSTRUCTION & CONSULTING SERVICE LTD.

STORM HISTORY:

DATE INSTALLED: JUNE 2015

INSTALLED BY: JOE ROBERTS CONSTRUCTION & CONSULTING SERVICE LTD.