

# City of Prince George

## HISTORY SHEET

PID: 029-639-301

Scale: 1:500

Legal: LOT 23

D.L.: 905

PLAN: EPP51089

Address: 2456 CHANCELLOR BLVD

Sanitary Connection:#	SIZE: 100mmØ	MATERIAL: PVC	INV. AT R 721.53m	CONNECTED
-----------------------	--------------	---------------	-------------------	-----------

Water Connection:#	SIZE: 19mmØ	MATERIAL: COPPER	INV. AT R 721.54m	CONNECTED
--------------------	-------------	------------------	-------------------	-----------

Storm Connection:#	SIZE: 100mmØ	MATERIAL: PVC	INV. AT R 721.56m	CONNECTED
--------------------	--------------	---------------	-------------------	-----------

Cash Receipt No's:	WATER	SANITARY	STORM
--------------------	-------	----------	-------

CURB FROM PROPERTY LINE	6m	PAVEMENT WIDTH	13m
-------------------------	----	----------------	-----

HYDRO	75mm DB2	U/G CONNECTION	✓
-------	----------	----------------	---

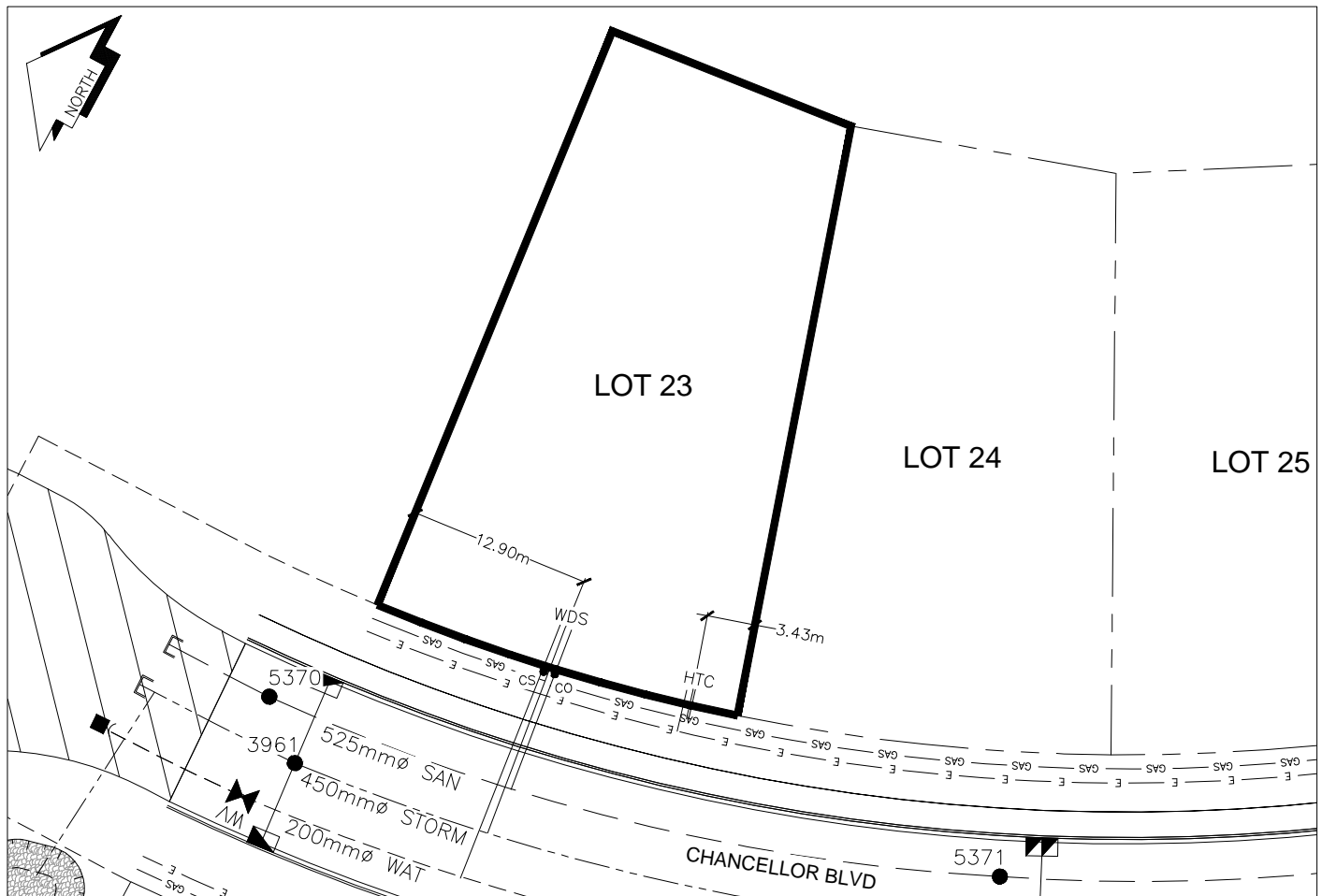
TELEPHONE	50mm DB2	U/G CONNECTION	✓
-----------	----------	----------------	---

GAS	42 PROP/P.E.		
-----	--------------	--	--

Information Sheets: REF. DWGS. L&M ENGINEERING LTD. JOB. 1273-19 DWGS.

Comments:	CS CURB STOP CO CLEAN OUT	WDS WATER SERVICE STS STORM SERVICE SSS SANITARY SERVICE	HS HYDRO SERVICE CS CABLE SERVICE TE TELECOMMUNICATIONS	GAS GAS E ELECTRICAL
-----------	------------------------------	--	---	-------------------------

THE INFORMATION CONTAINED HEREIN IS FOR INTERNAL USE ONLY.  
NOT TO BE RELIED UPON UNLESS CONFIRMED BY THE SITE INSPECTION AND/OR INVESTIGATION



SANITARY, STORM & WATER SERVICE INVERTS	SANITARY	WATER	STORM
1. Distance from San. M.H. <u>5370</u> toward San. M.H. <u>5371</u> to lot service connection point is:	18.58m	N/A	N/A
1a.Distance from Stm. M.H. <u>3961</u> toward Stm. M.H. <u>3952</u> to lot service connection point is:	N/A	N/A	14.41m
2. Main Size at connection point is	525mmØ	200mmØ	450mmØ
3. Invert of service at main conn. stub point is	721.14m	720.77m	720.96m
4. Invert at service end is	721.64m	721.62m	721.62m
5. Cover at property line in meters	2.47m	2.32m	2.32m
6. Survey Date:JUNE 2015 Book Ref.:1273-19 By:L&M ENGINEERING			

### SANITARY HISTORY:

DATE INSTALLED: JUNE 2015

INSTALLED BY: JOE ROBERTS CONSTRUCTION & CONSULTING SERVICE LTD.

### WATER HISTORY:

DATE INSTALLED: JUNE 2015

INSTALLED BY: JOE ROBERTS CONSTRUCTION & CONSULTING SERVICE LTD.

### STORM HISTORY:

DATE INSTALLED: JUNE 2015

INSTALLED BY: JOE ROBERTS CONSTRUCTION & CONSULTING SERVICE LTD.