

# City of Prince George

## HISTORY SHEET

PID: 029-639-247

Scale: 1:500

Legal: LOT 17

D.L.: 905

PLAN: EPP51089

Address: 2485 CHANCELLOR BLVD

Sanitary Connection:#	SIZE: 100mmØ	MATERIAL: PVC	INV. AT $\mathbb{R}$ 717.91m	CONNECTED
-----------------------	--------------	---------------	------------------------------	-----------

Water Connection:#	SIZE: 19mmØ	MATERIAL: Copper	INV. AT $\mathbb{R}$ 718.06m	CONNECTED
--------------------	-------------	------------------	------------------------------	-----------

Storm Connection:#	SIZE: 100mmØ	MATERIAL: PVC	INV. AT $\mathbb{R}$ 717.91m	CONNECTED
--------------------	--------------	---------------	------------------------------	-----------

Cash Receipt No's:	WATER	SANITARY	STORM
--------------------	-------	----------	-------

CURB FROM PROPERTY LINE	6m	PAVEMENT WIDTH	13m
-------------------------	----	----------------	-----

HYDRO	75mm DB2	U/G CONNECTION	✓
-------	----------	----------------	---

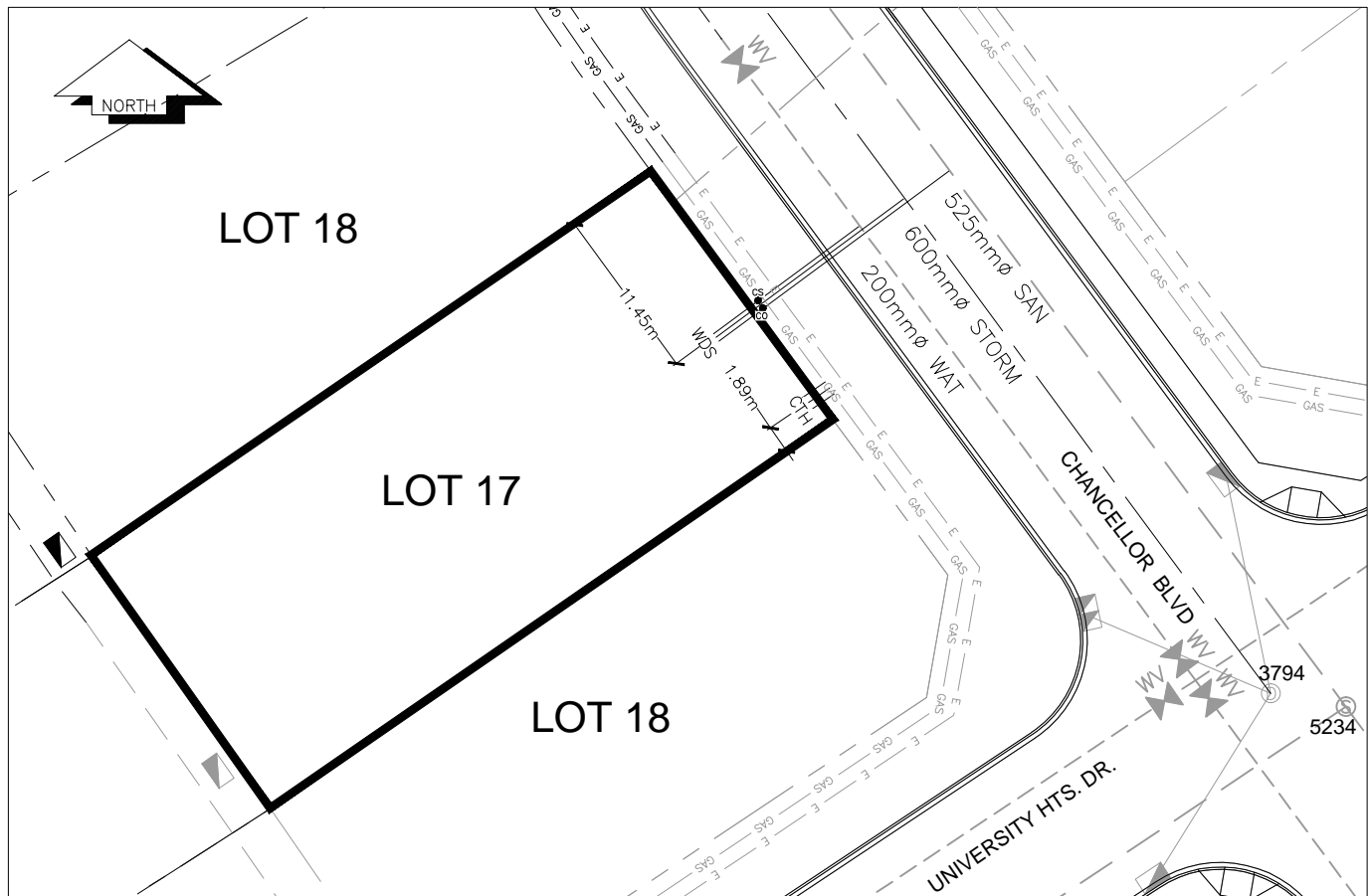
TELEPHONE	100mm DB2	U/G CONNECTION	✓
-----------	-----------	----------------	---

GAS	42 PROP/P.E.		
-----	--------------	--	--

Information Sheets: REF. DWGS. L&M ENGINEERING LTD. JOB. 1273-14-04 DWGS.

Comments:	CS CURB STOP CO CLEAN OUT	SDW WATER SERVICE STORM SERVICE SANITARY SERVICE	HYDRO SERVICE CABLE SERVICE TELECOMMUNICATIONS	GAS GAS ELECTRICAL
-----------	------------------------------	---	--	--------------------------

THE INFORMATION CONTAINED HEREIN IS FOR INTERNAL USE ONLY.  
NOT TO BE RELIED UPON UNLESS CONFIRMED BY THE SITE INSPECTION AND/OR INVESTIGATION



SANITARY, STORM & WATER SERVICE INVERTS	SANITARY	WATER	STORM
1. Distance from San. M.H. <u>5234</u> toward San. M.H. <u>5371</u> to lot service connection point is:	47.24m	N/A	N/A
1a.Distance from Stm. M.H. <u>3794</u> toward Stm. M.H. <u>3962</u> to lot service connection point is:	N/A	N/A	44.54m
2. Main Size at connection point is	525mmØ	200mmØ	600mmØ
3. Invert of service at main conn. stub point is	717.66m	717.88m	717.59m
4. Invert at service end is	717.97m	718.12m	717.97m
5. Cover at property line in meters	2.34m	2.27m	2.34m
6. Survey Date: MAY 2012 Book Ref.:1273-14-04 By:L&M ENGINEERING LTD			

### SANITARY HISTORY:

DATE INSTALLED: JULY 2012

INSTALLED BY: SUNLAND UTILITIES LTD

### WATER HISTORY:

DATE INSTALLED: JULY 2012

INSTALLED BY: SUNLAND UTILITIES LTD.

### STORM HISTORY:

DATE INSTALLED: JULY 2012

INSTALLED BY: SUNLAND UTILITIES LTD.