

# City of Prince George

## HISTORY SHEET

PID: 029-638-917

Scale: 1:500

Legal: LOT 1

D.L.: 905/2616

PLAN: EPP51089

Address: 2483 GRAFTON PL

Sanitary Connection:#	SIZE: 100mmØ	MATERIAL: PVC	INV. AT R 723.24m	CONNECTED
-----------------------	--------------	---------------	-------------------	-----------

Water Connection:#	SIZE: 19mmØ	MATERIAL: Copper	INV. AT R 723.07m	CONNECTED
--------------------	-------------	------------------	-------------------	-----------

Storm Connection:#	SIZE: 100mmØ	MATERIAL: PVC	INV. AT R 723.24m	CONNECTED
--------------------	--------------	---------------	-------------------	-----------

Cash Receipt No's:	WATER	SANITARY	STORM
--------------------	-------	----------	-------

CURB FROM PROPERTY LINE	5m	PAVEMENT WIDTH	10m
-------------------------	----	----------------	-----

HYDRO	75mm DB2	U/G CONNECTION	✓
-------	----------	----------------	---

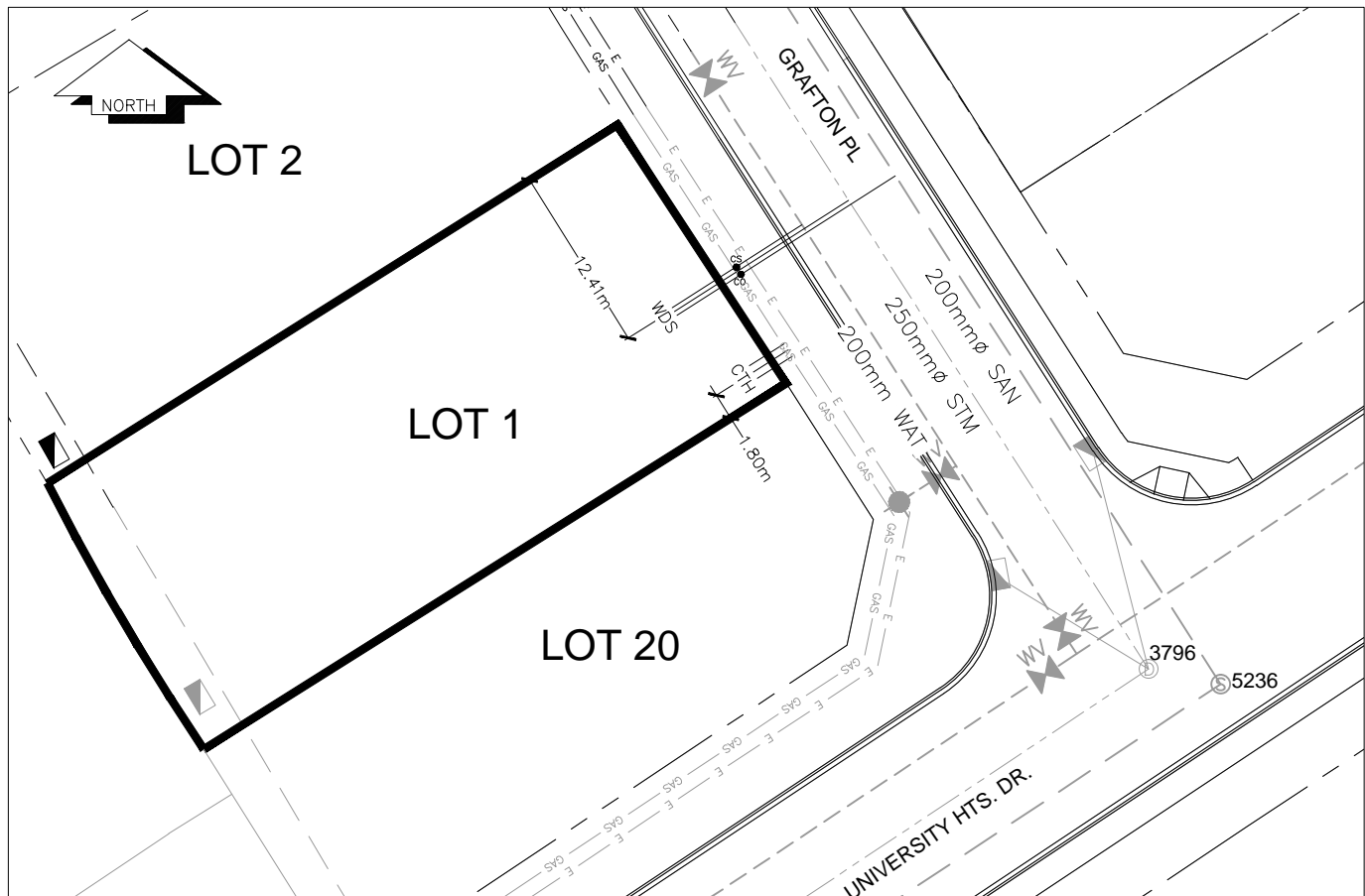
TELEPHONE	100mm DB2	U/G CONNECTION	✓
-----------	-----------	----------------	---

GAS	42 PROP/P.E.		
-----	--------------	--	--

Information Sheets: REF. DWGS. L&M ENGINEERING LTD. JOB. 1273-14-04 DWGS.

Comments:	CS CURB STOP CO CLEAN OUT	SDW WATER SERVICE STORM SERVICE SANITARY SERVICE	HYDRO SERVICE CABLE SERVICE TELECOMMUNICATIONS	GAS GAS ELECTRICAL
-----------	------------------------------	---	--	--------------------------

THE INFORMATION CONTAINED HEREIN IS FOR INTERNAL USE ONLY.  
NOT TO BE RELIED UPON UNLESS CONFIRMED BY THE SITE INSPECTION AND/OR INVESTIGATION



SANITARY, STORM & WATER SERVICE INVERTS	SANITARY	WATER	STORM
1. Distance from San. M.H. <u>5373</u> toward San. M.H. <u>5236</u> to lot service connection point is:	59.19m	N/A	N/A
1a.Distance from Stm. M.H. <u>3960</u> toward Stm. M.H. <u>3796</u> to lot service connection point is:	N/A	N/A	52.24m
2. Main Size at connection point is	200mmØ	200mmØ	250mmØ
3. Invert of service at main conn. stub point is	722.97m	722.94m	722.97m
4. Invert at service end is	723.30m	723.13m	723.30m
5. Cover at property line in meters	2.01m	2.26m	2.01m
6. Survey Date: MAY 2012 Book Ref.:1273-14-04 By:L&M ENGINEERING LTD			

SANITARY HISTORY:

DATE INSTALLED: JULY 2012

INSTALLED BY: SUNLAND UTILITIES LTD

WATER HISTORY:

DATE INSTALLED: JULY 2012

INSTALLED BY: SUNLAND UTILITIES LTD.

STORM HISTORY:

DATE INSTALLED: JULY 2012

INSTALLED BY: SUNLAND UTILITIES LTD.