

City of Prince George

HISTORY SHEET

PID: 029-310-849

Scale: 1:500

Legal: LOT 60

D.L.: 2003

PLAN: EPP31288

Address: 3439 PARKVIEW CRES

Sanitary Connection:#	SIZE: 100mmØ	MATERIAL: PVC	INV. AT R 707.90m	CONNECTED
-----------------------	--------------	---------------	-------------------	-----------

Water Connection:#	SIZE: 19mmØ	MATERIAL: Copper	INV. AT R 707.90m	
--------------------	-------------	------------------	-------------------	--

Storm Connection:#	SIZE: 100mmØ	MATERIAL: PVC	INV. AT R 707.90m	CONNECTED
--------------------	--------------	---------------	-------------------	-----------

Cash Receipt No's:	WATER	SANITARY	STORM
--------------------	-------	----------	-------

CURB FROM PROPERTY LINE	5m	PAVEMENT WIDTH	10m
-------------------------	----	----------------	-----

HYDRO	75mm DB2	U/G CONNECTION	✓
-------	----------	----------------	---

TELEPHONE	100mm DB2	U/G CONNECTION	✓
-----------	-----------	----------------	---

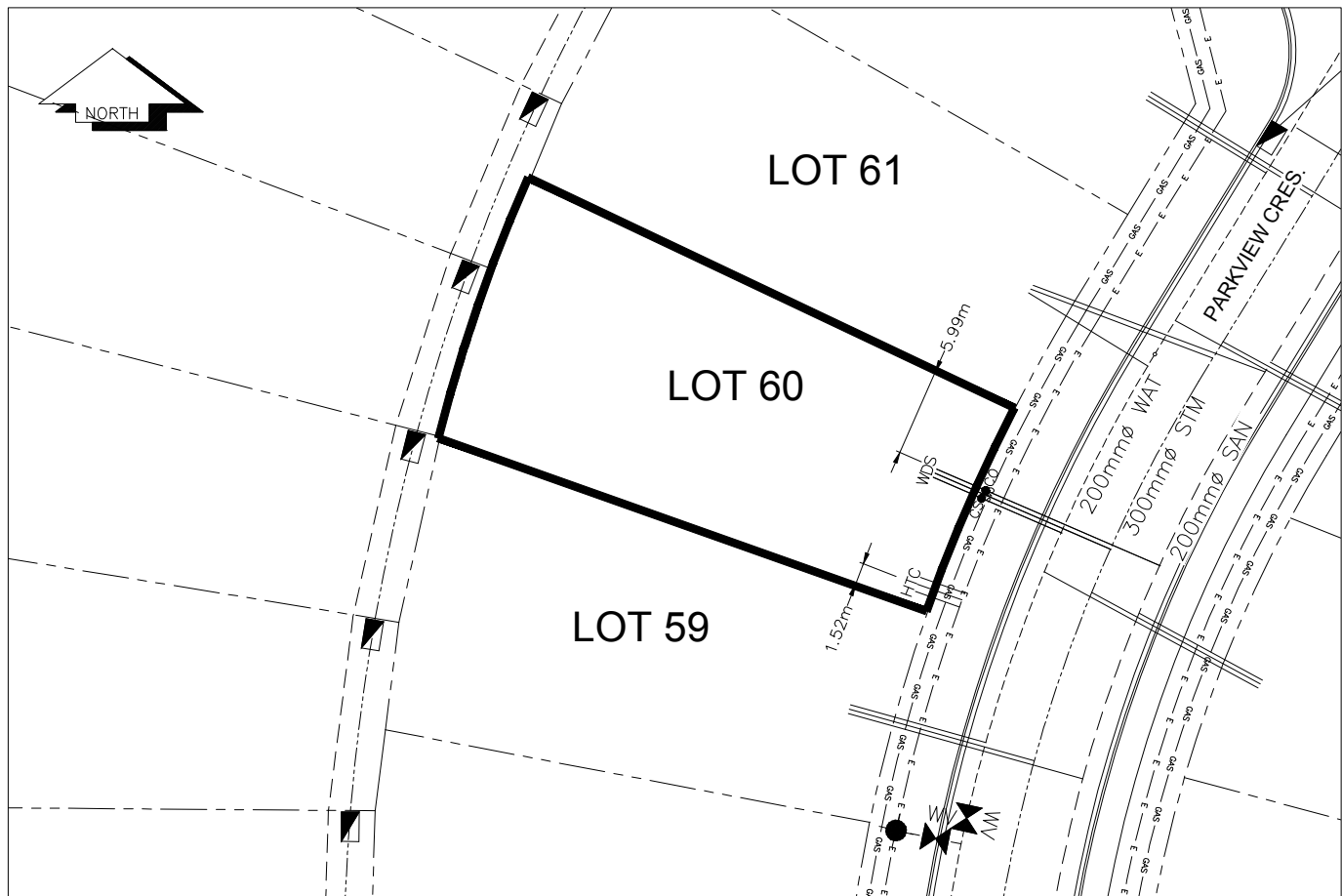
GAS	42 PROP/P.E.		
-----	--------------	--	--

Information Sheets: REF. DWGS. L&M ENGINEERING LTD. JOB. 1273-17-04 DWGS.

Comments:	CS CURB STOP CO CLEAN OUT	SDW WATER SERVICE SDW STORM SERVICE SDW SANITARY SERVICE	HTC HYDRO SERVICE TCH CABLE SERVICE TCH TELECOMMUNICATIONS	— GAS — ELECTRICAL
-----------	------------------------------	--	--	-----------------------

THE INFORMATION CONTAINED HEREIN IS FOR INTERNAL USE ONLY.

NOT TO BE RELIED UPON UNLESS CONFIRMED BY THE SITE INSPECTION AND/OR INVESTIGATION



SANITARY, STORM & WATER SERVICE INVERTS	SANITARY	WATER	STORM
1. Distance from San. M.H. <u>5227</u> toward San. M.H. <u>5221</u> to lot service connection point is:	43.38m	N/A	N/A
1a.Distance from Stm. M.H. <u>3781</u> toward Stm. M.H. <u>3782</u> to lot service connection point is:	N/A	N/A	41.26m
2. Main Size at connection point is	200mmØ	200mmØ	300mmØ
3. Invert of service at main conn. stub point is	707.50m	706.52m	707.30m
4. Invert at service end is	708.31m	708.34m	708.29m
5. Cover at property line in meters	2.36m	2.44m	2.36m
6. Survey Date: MAY 2012 Book Ref.:1273-14-04 By:L&M ENGINEERING LTD			

SANITARY HISTORY:

DATE INSTALLED: JULY 2012

INSTALLED BY: SUNLAND UTILITIES LTD

SAG IN SANITARY SERVICE WAS REPAIRED BY JOE ROBERTS CONSTRUCTION LTD. AUGUST 2017

WATER HISTORY:

DATE INSTALLED: JULY 2012

INSTALLED BY: SUNLAND UTILITIES LTD.

STORM HISTORY:

DATE INSTALLED: JULY 2012

INSTALLED BY: SUNLAND UTILITIES LTD.

SAG IN STORM SERVICE WAS REPAIRED BY JOE ROBERTS CONSTRUCTION LTD. AUGUST 2017